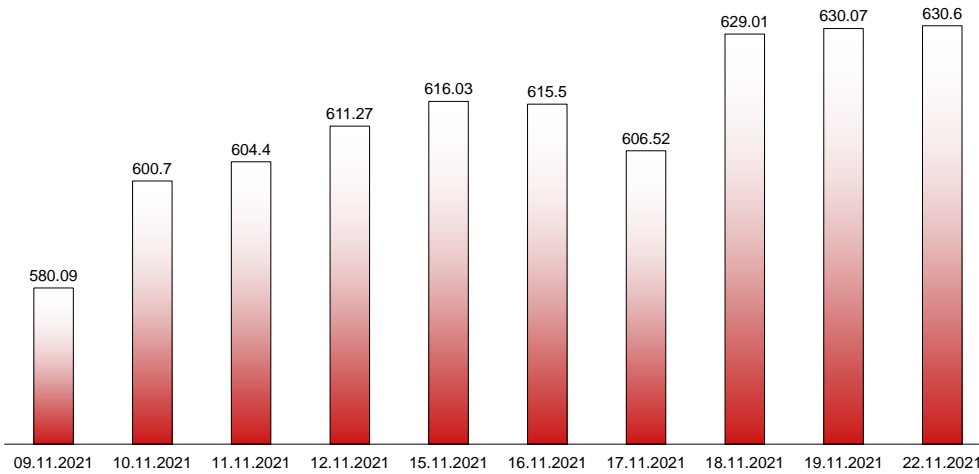




22.11.2021

RIVERLAKE european TANKER INDEX (ReTI)*



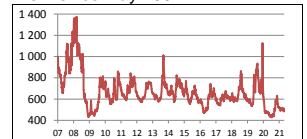
ReTI values

Max	24.07.08	1372.70
Today		630.60
Min	20.11.20	427.37

ReTI trends

daily	0.53
avg last decade	34.45
avg last 30 days	79.46

ReTI since May 2007



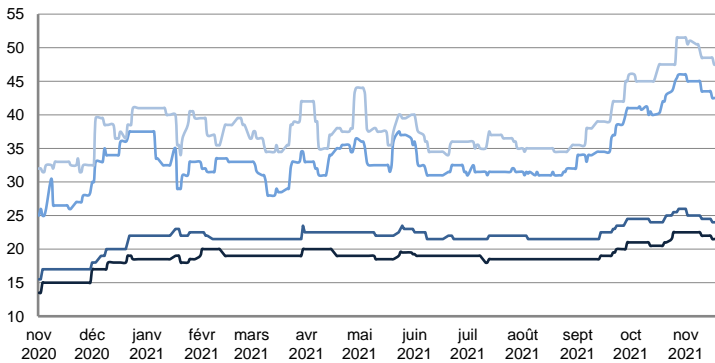
* The Riverlake european Tanker Index (ReTI) is a composite index. All main European tanker movements are represented being six crude oil tanker routes, six clean petroleum products tanker routes and five dirty petroleum tanker routes. The oil tanker stems represented are between 6'000 MT to 135'000 MT. It covers all regions in Europe including the North Sea, Baltic Sea, UKContinent, Mediterranean and Black Sea.

RIVERLAKE TANKER INDEX (RTI)

CRUDE OIL TANKERS

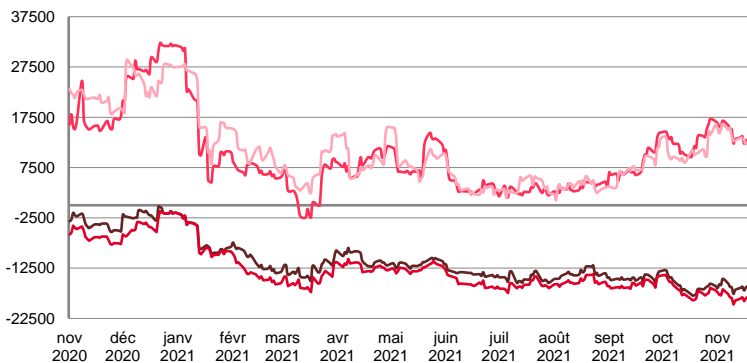
VLCC

WORLDSCALE



	TODAY	FRIDAY	DAILY TREND	MTD AVERAGE
AG / USG 280kT	21.5	21.5	▬	22.1
AG / UKC 280kT	24.0	24.0	▬	24.8
AG / EAST 270kT	42.5	42.5	▬	44.1
WAF / USG 260kT	47.5	47.5	▬	49.4

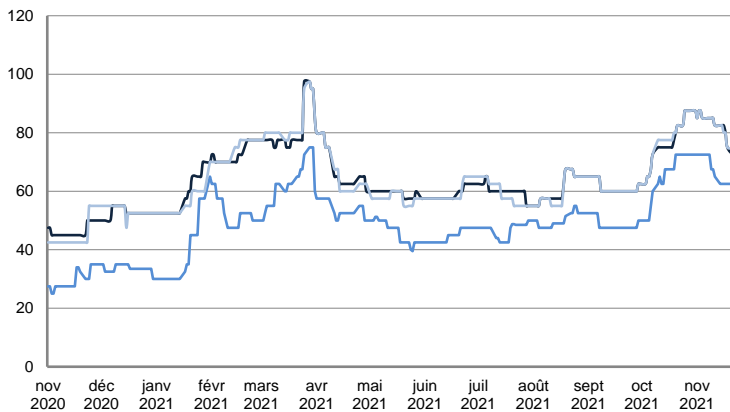
TIME CHARTER EQUIVALENT (\$/DAY)



	TODAY	FRIDAY	DAILY TREND	MTD AVERAGE
AG / USG 280kT	-15 326.0	-16 092.0	▲	-16166.4
AG / UKC 280kT	-17 473.0	-18 234.0	▲	-18114.8
AG / EAST 270kT	13 878.0	13 079.0	▲	14501.4
WAF / USG 260kT	11 912.0	12 457.0	▼	13934.8

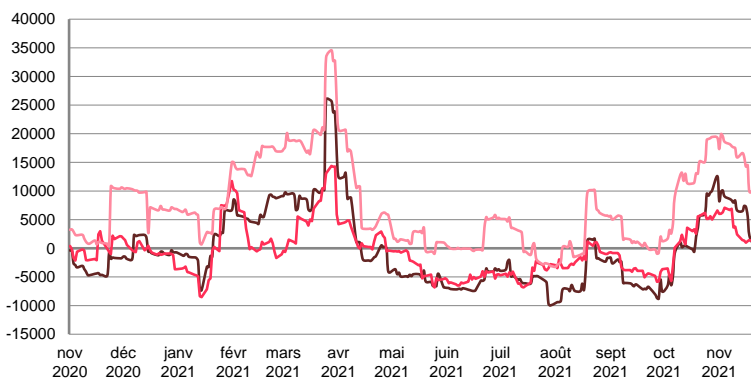
SUEZMAX

WORLDSCALE



	TODAY	FRIDAY	DAILY TREND	MTD AVERAGE
BSEA / MED 135kT	72.5	75.0	▼	83.1
WAF / USG 130kT	62.5	62.5	▬	49.4
XMED 135kT	75.0	75.0	▬	83.1

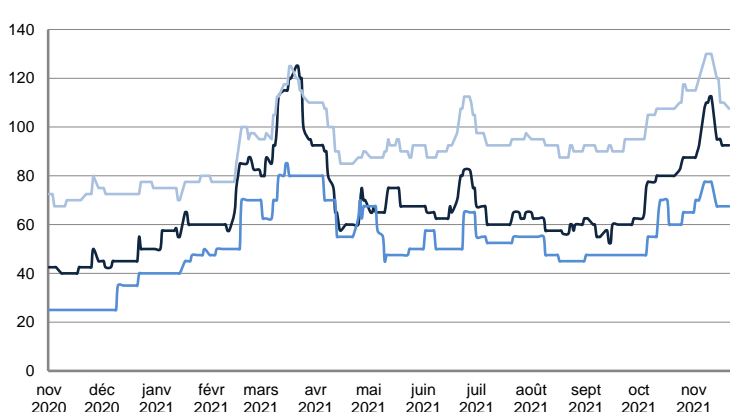
TIME CHARTER EQUIVALENT (\$/DAY)



	TODAY	FRIDAY	DAILY TREND	MTD AVERAGE
BSEA / MED 135kT	232.0	2 186.0	▼	7432.6
WAF / USG 130kT	1 029.0	1 464.0	▼	3934.2
XMED 135kT	10 688.0	9 887.0	▲	16477.1

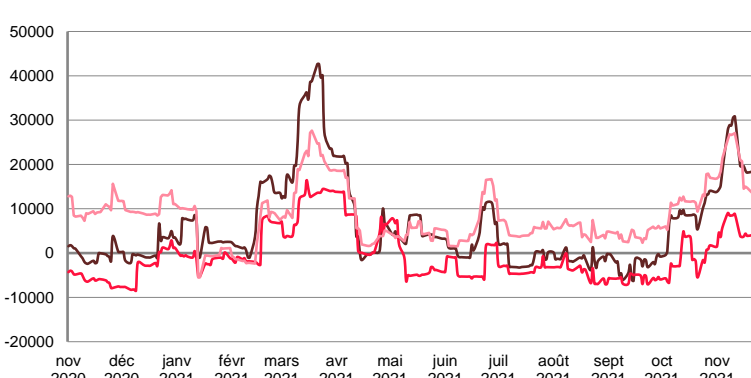
AFRAMAX

WORLDSCALE



	TODAY	FRIDAY	DAILY TREND	MTD AVERAGE
BALTIC / UKC 100kT	92.5	92.5	▬	97.5
BALTIC / STATES 100kT	67.5	67.5	▬	70.8
NSEA / UKC 80kT	107.5	110.0	▼	119.2

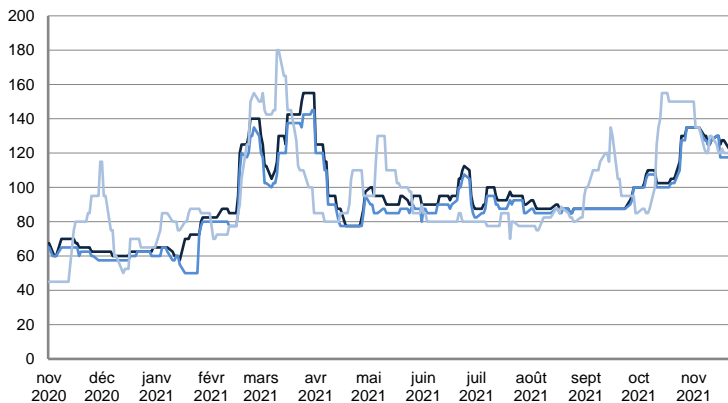
TIME CHARTER EQUIVALENT (\$/DAY)



	TODAY	FRIDAY	DAILY TREND	MTD AVERAGE
BALTIC / UKC 100kT	18 437.0	18 147.0	▲	21031.3
BALTIC / STATES 100kT	4 100.0	3 871.0	▲	5239.1
NSEA / UKC 80kT	13 476.0	14 702.0	▼	20188.4

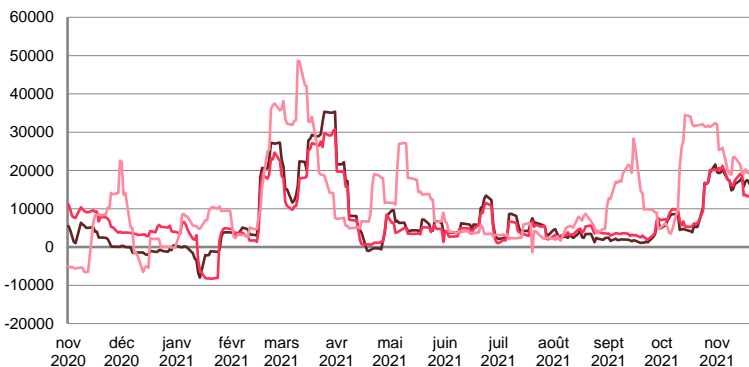
AFRAMAX

WORLDSCALE



	TODAY	FRIDAY	DAILY TREND	MTD AVERAGE
— BSEA / MED 80kT	122.5	127.5	▼	129.7
— XMED 80kT	117.5	117.5	▬	127.3
— CAR / USA 70kT	120.0	120.0	▬	128.4

TIME CHARTER EQUIVALENT (\$/DAY)

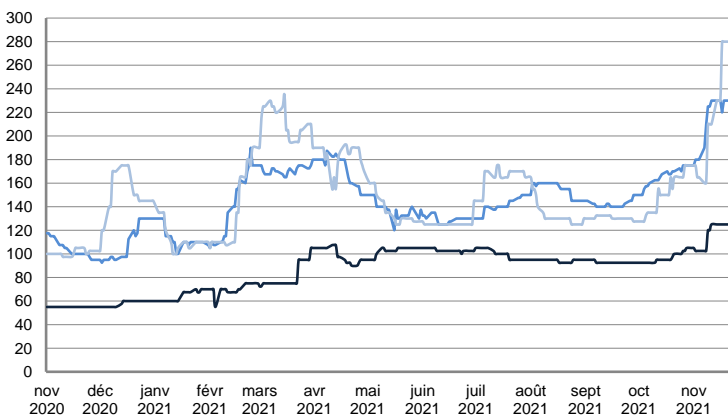


	TODAY	FRIDAY	DAILY TREND	MTD AVERAGE
— BSEA / MED 80kT	15 183.0	17 485.0	▼	17662.3
— XMED 80kT	13 852.0	13 189.0	▲	17419.0
— CAR / USA 70kT	19 107.0	19 374.0	▼	22814.6

PRODUCT TANKERS

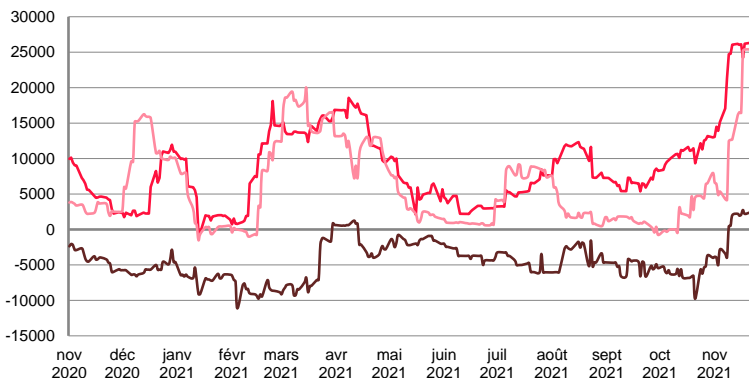
DPP

WORLDSCALE



	TODAY	FRIDAY	DAILY TREND	MTD AVERAGE
— BALTIC / STATES 55kT	125.0	125.0	▬	114.8
— BALTIC / UKC 30kT	230.0	230.0	▬	208.8
— BSEA / MED 30kT	280.0	280.0	▬	208.4

TIME CHARTER EQUIVALENT (\$/DAY)

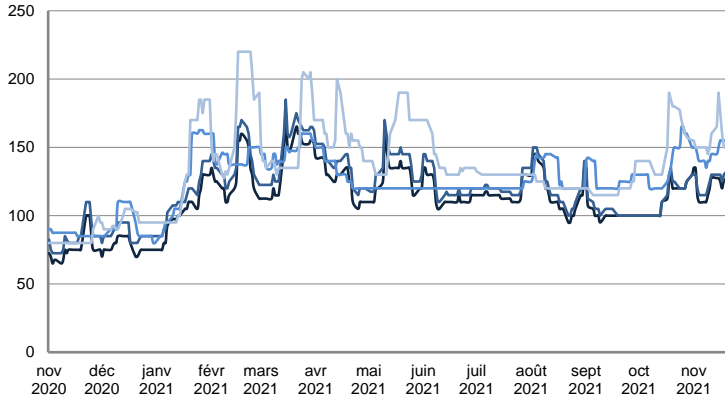


	TODAY	FRIDAY	DAILY TREND	MTD AVERAGE
— BALTIC / STATES 55kT	2 408.0	2 200.0	▲	-654.8
— BALTIC / UKC 30kT	26 320.0	26 186.0	▲	21162.4
— BSEA / MED 30kT	25 386.0	25 391.0	▼	12652.2

PRODUCT TANKERS

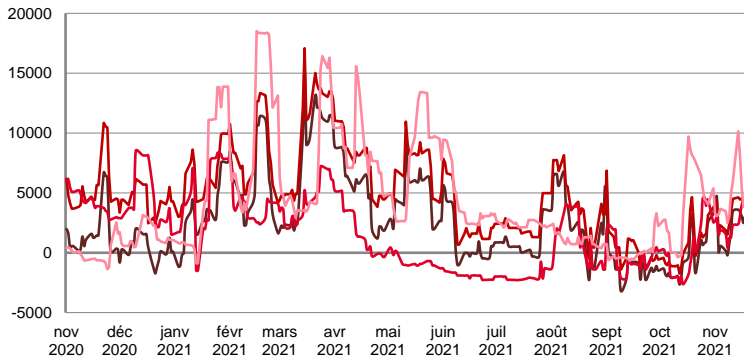
CPP

WORLDSCALE



	TODAY	FRIDAY	DAILY TREND	MTD AVERAGE
UKC / STATES 37kT	130.0	125.0	▲	122.7
UKC / WAF 33kT	135.0	130.0	▲	125.6
BALTIC / UKC 30kT	155.0	155.0	■	146.9
BSEA / MED 30kT	150.0	150.0	■	156.6

TIME CHARTER EQUIVALENT (\$/DAY)

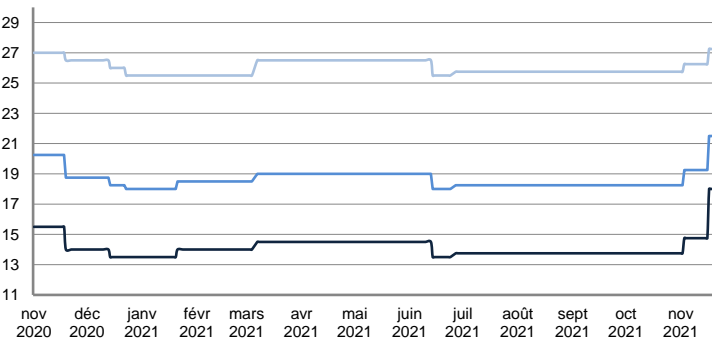


	TODAY	FRIDAY	DAILY TREND	MTD AVERAGE
UKC / STATES 37kT	4 226.0	3 101.0	▲	2428.7
UKC / WAF 33kT	5 666.0	4 615.0	▲	3603.4
BALTIC / UKC 30kT	4 187.0	4 060.0	▲	2520.3
BSEA / MED 30kT	4 048.0	4 054.0	▼	4627.3

SMALL TANKERS

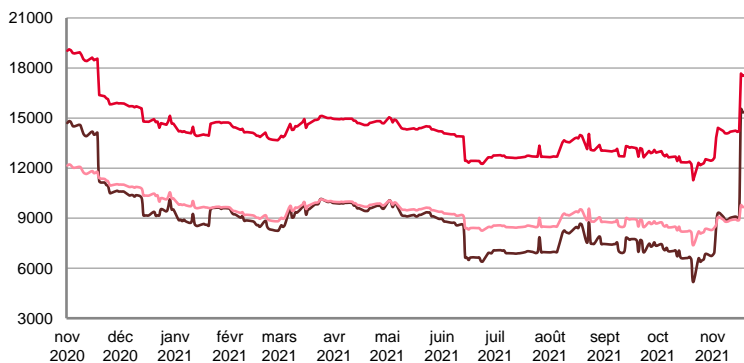
DPP

\$ / T



	TODAY	FRIDAY	DAILY TREND	MTD AVERAGE
BALTIC / UKC 15kT	18.0	18.0	■	15.2
BALTIC / UKC 12kT	21.5	21.5	■	19.5
BALTIC / UKC 6kT	27.3	27.3	■	26.3

TIME CHARTER EQUIVALENT (\$/DAY)

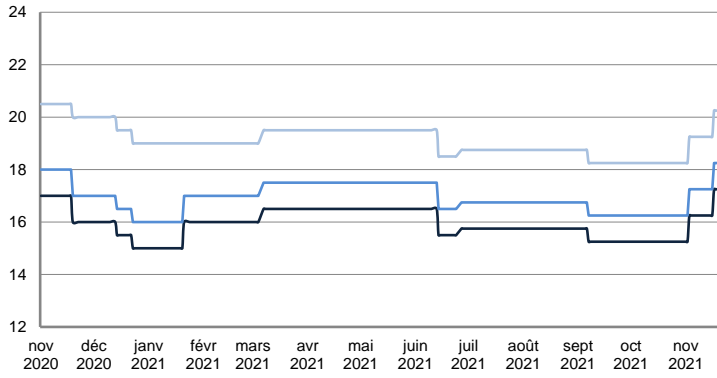


	TODAY	FRIDAY	DAILY TREND	MTD AVERAGE
BALTIC / UKC 15kT	15 430.0	15 344.0	▲	9786.2
BALTIC / UKC 10kT	17 607.0	17 530.0	▲	14493.1
BALTIC / UKC 6kT	9 725.0	9 661.0	▲	8920.4

SMALL TANKERS

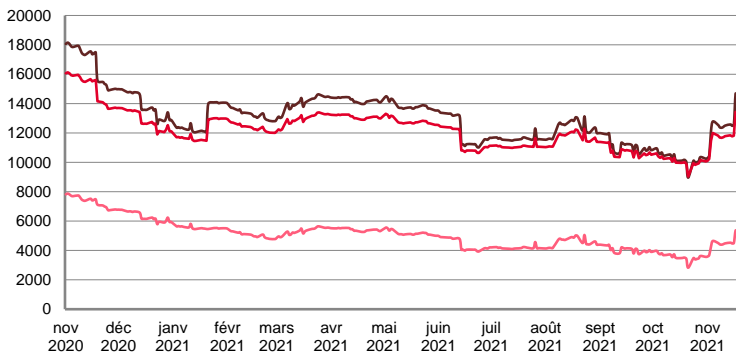
CPP

\$ / T



	TODAY	FRIDAY	DAILY TREND	MTD AVERAGE
BALTIC / UKC 15kT	17.3	17.3	↔	16.3
BALTIC / UKC 12kT	18.3	18.3	↔	17.3
BALTIC / UKC 6kT	20.3	20.3	↔	19.3

TIME CHARTER EQUIVALENT (\$/DAY)

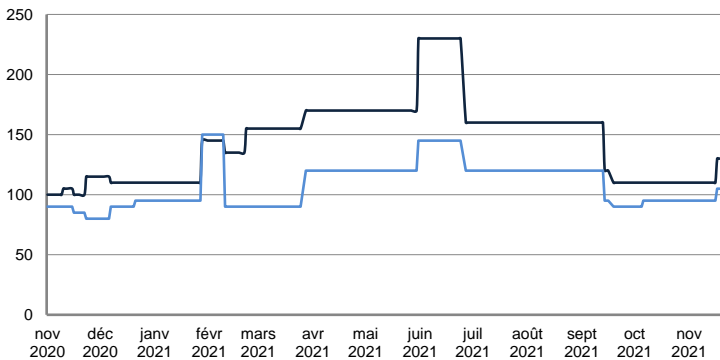


	TODAY	FRIDAY	DAILY TREND	MTD AVERAGE
BALTIC / UKC 15kT	14 622.0	14 517.0	▲	12468.8
BALTIC / UKC 12kT	13 387.0	13 308.0	▲	11754.9
BALTIC / UKC 6kT	5 332.0	5 268.0	▲	4464.3

SMALL TANKERS - AFRICA

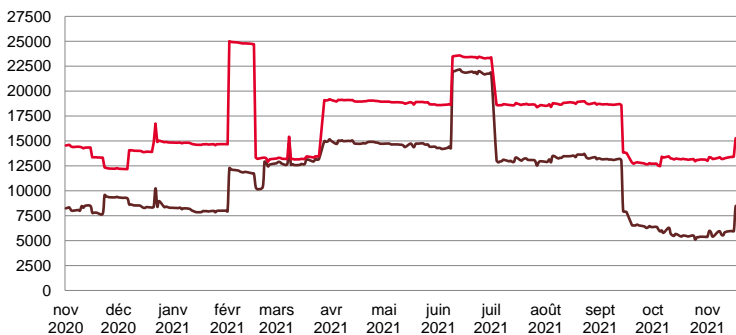
CPP

LUMPSUM (000's US\$)



	TODAY	FRIDAY	DAILY TREND	MTD AVERAGE
XWAF 15kT	130 000.0	130 000.0	↔	113750.0
XWAF 10kT	105 000.0	105 000.0	↔	96875.0

TIME CHARTER EQUIVALENT (\$/DAY)



	TODAY	FRIDAY	DAILY TREND	MTD AVERAGE
XWAF 15kT	8 495.0	8 503.0	▼	6254.6
XWAF 10kT	15 302.0	15 310.0	▼	13650.5

Disclaimer:
 This report has been prepared by Riverlake . The rates contained herein are indicative only. Rate indications are as of the date of publication and are subject to change without notice.
 Riverlake does not assume any liability or responsibility for the correctness or completeness of the information contained herein.
 The above report is Copyright of Riverlake.
 No unauthorised reproduction or redistribution without permission from Riverlake Shipping.