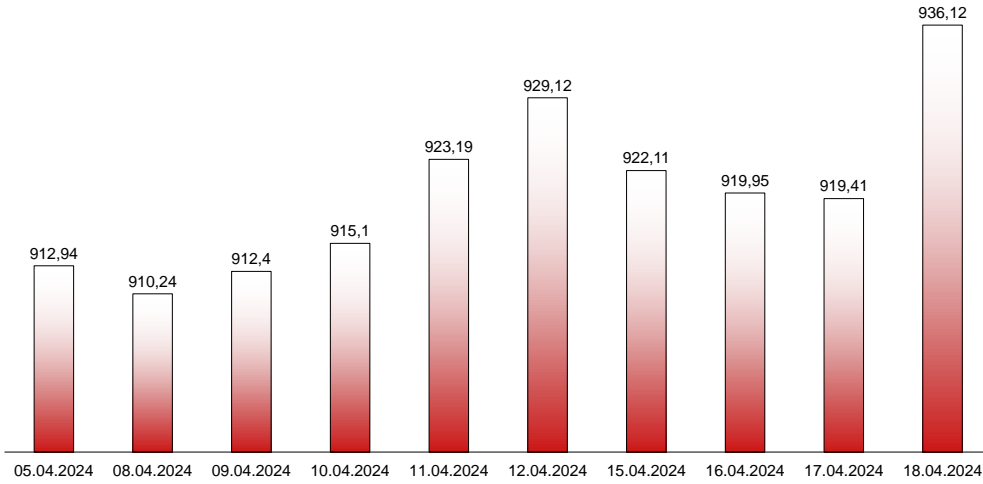




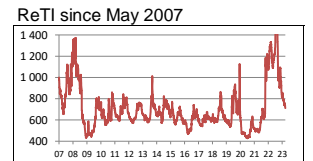
18.04.2024

RIVERLAKE european TANKER INDEX (ReTI)*



ReTI values		
Max	14.12.22	1610,26
Today		936,12
Min	20.11.20	427,37

ReTI trends	
daily	16,71
avg last decade	-36,20
avg last 30 days	-39,17



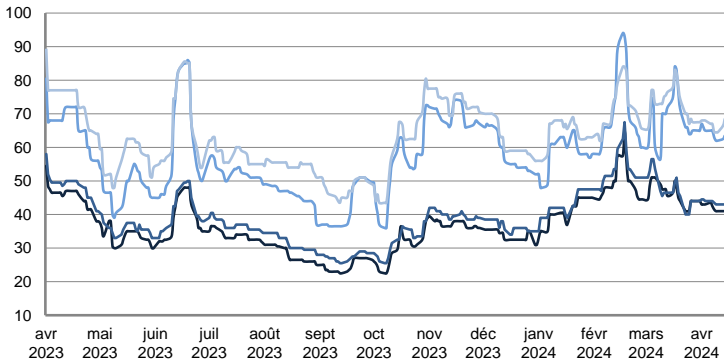
* The Riverlake european Tanker Index (ReTI) is a composite index. All main European tanker movements are represented being six crude oil tanker routes, six clean petroleum products tanker routes and five dirty petroleum tanker routes. The oil tanker stems represented are between 6'000 MT to 135'000 MT. It covers all regions in Europe including the North Sea, Baltic Sea, UKContinent, Mediterranean and Black Sea.

RIVERLAKE TANKER INDEX (RTI)

CRUDE OIL TANKERS

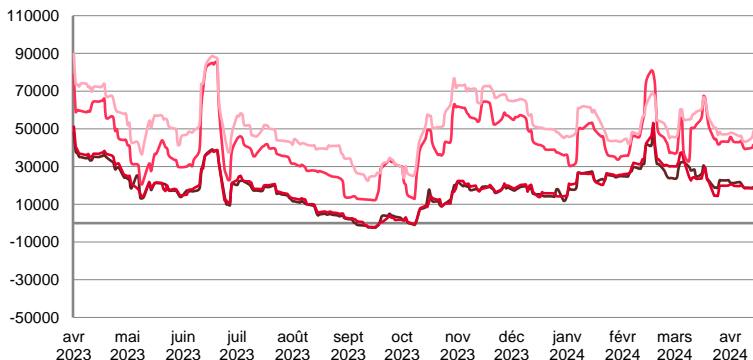
VLCC

WORLDSCALE



	TODAY	WEDNESDAY	DAILY TREND	MTD AVERAGE
AG / USG 280kT	41,0	41,0	▲	42,2
AG / UKC 280kT	42,5	43,0	▼	43,6
AG / EAST 270kT	60,0	63,0	▼	63,9
WAF / USG 260kT	65,5	68,0	▼	66,8

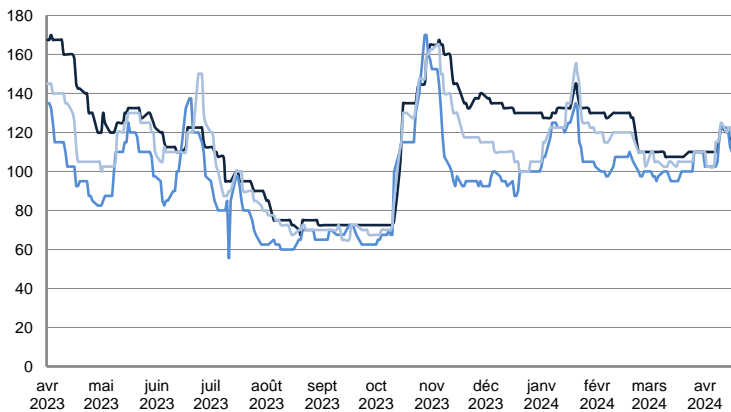
TIME CHARTER EQUIVALENT (\$/DAY)



	TODAY	WEDNESDAY	DAILY TREND	MTD AVERAGE
AG / USG 280kT	18 626,0	15 571,0	▲	20070,9
AG / UKC 280kT	17 699,0	15 351,0	▲	19072,6
AG / EAST 270kT	36 671,0	37 167,0	▼	41499,8
WAF / USG 260kT	46 109,0	46 216,0	▼	46178,8

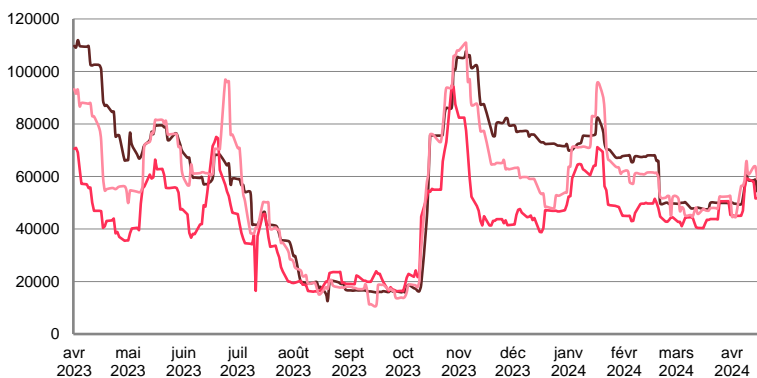
SUEZMAX

WORLDSCALE



	TODAY	WEDNESDAY	DAILY TREND	MTD AVERAGE
—BSEA / MED 135KT	115,0	120,0	▼	114,1
—WAF / USG 130KT	110,0	112,5	▼	66,8
—XMED 135KT	117,5	122,5	▼	113,8

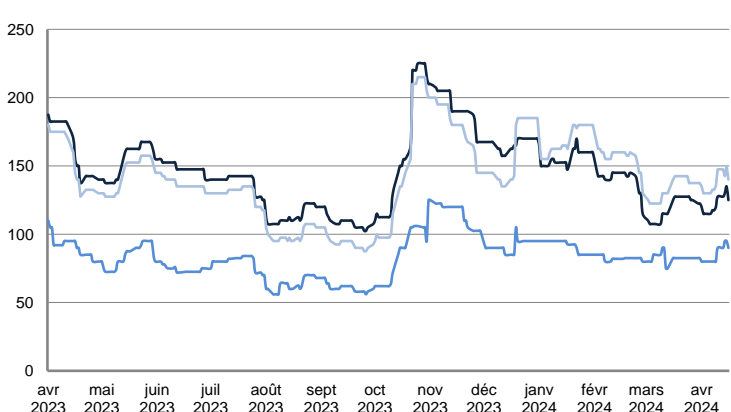
TIME CHARTER EQUIVALENT (\$/DAY)



	TODAY	WEDNESDAY	DAILY TREND	MTD AVERAGE
—BSEA / MED 135KT	54 324,0	58 746,0	▼	53396,0
—WAF / USG 130KT	51 686,0	51 642,0	▲	50657,8
—XMED 135KT	59 051,0	63 779,0	▼	55445,5

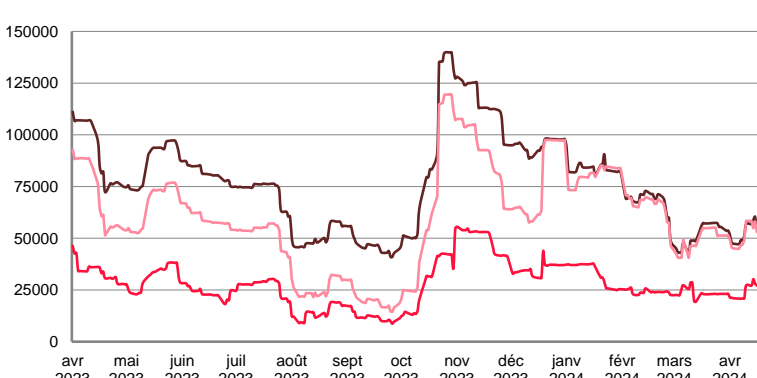
AFRAMAX

WORLDSCALE



	TODAY	WEDNESDAY	DAILY TREND	MTD AVERAGE
—BALTIC / UKC 100KT	125,0	135,0	▼	122,1
—BALTIC / STATES 100KT	90,0	95,0	▼	84,6
—NSEA / UKC 80KT	140,0	150,0	▼	137,7

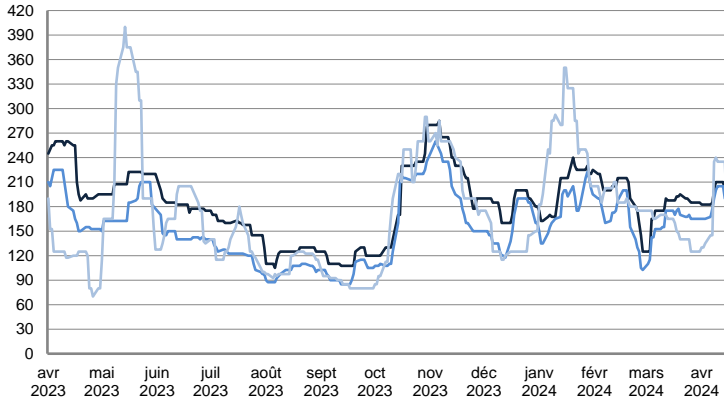
TIME CHARTER EQUIVALENT (\$/DAY)



	TODAY	WEDNESDAY	DAILY TREND	MTD AVERAGE
—BALTIC / UKC 100KT	55 053,0	60 361,0	▼	52741,3
—BALTIC / STATES 100KT	27 129,0	28 062,0	▼	23779,0
—NSEA / UKC 80KT	52 939,0	58 178,0	▼	50891,7

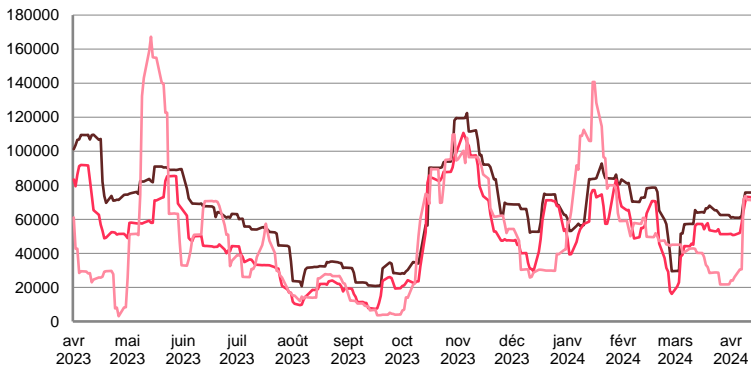
AFRAMAX

WORLDSCALE



	TODAY	WEDNESDAY	DAILY TREND	MTD AVERAGE
BSEA / MED 80kT	197,5	200,0	▼	193,8
XMED 80kT	187,5	187,5	▬	181,1
CAR / USA 70kT	180,0	180,0	▬	176,8

TIME CHARTER EQUIVALENT (\$/DAY)

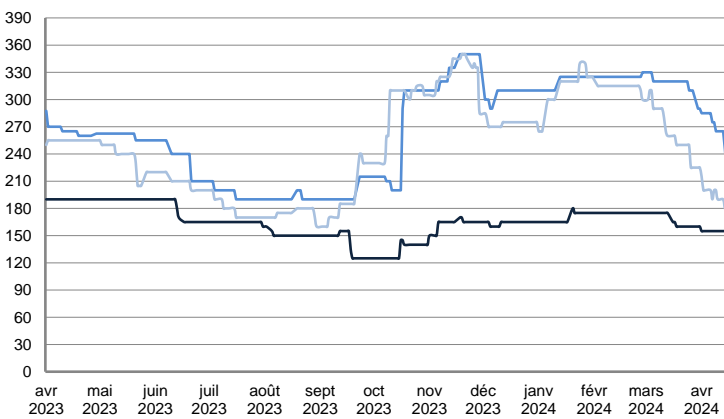


	TODAY	WEDNESDAY	DAILY TREND	MTD AVERAGE
BSEA / MED 80kT	69 177,0	70 398,0	▼	67047,8
XMED 80kT	63 547,0	63 591,0	▼	59908,1
CAR / USA 70kT	47 514,0	45 867,0	▲	45134,6

PRODUCT TANKERS

DPP

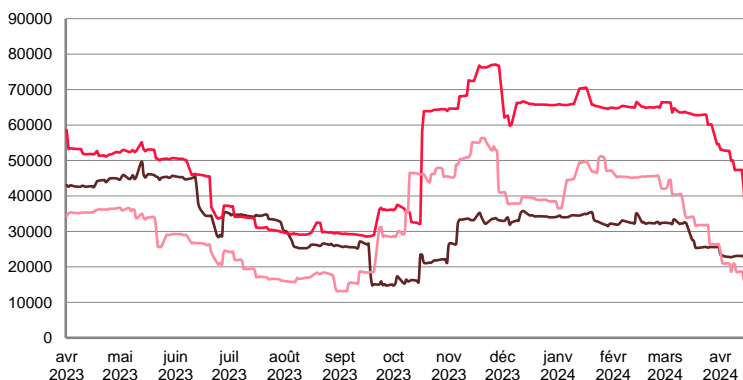
WORLDSCALE



	TODAY	WEDNESDAY	DAILY TREND	MTD AVERAGE
BALTIC / STATES 55kT	145,0	155,0	▼	155,0
BALTIC / UKC 30kT	220,0	220,0	▬	267,9
BSEA / MED 30kT	180,0	180,0	▬	198,2

*Since 1 January 2023, rates from the Baltic, which included rates from Russian ports, are no longer quoted. This explains the correction.

TIME CHARTER EQUIVALENT (\$/DAY)

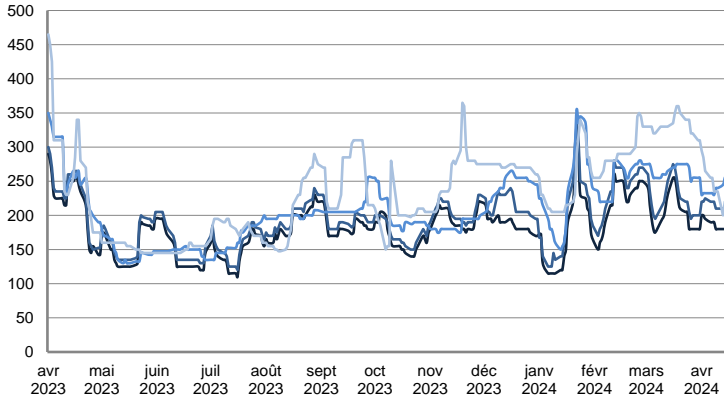


	TODAY	WEDNESDAY	DAILY TREND	MTD AVERAGE
BALTIC / STATES 55kT	19 338,0	20 376,0	▼	22945,6
BALTIC / UKC 30kT	34 933,0	33 363,0	▲	48073,4
BSEA / MED 30kT	16 632,0	16 523,0	▲	20493,0

PRODUCT TANKERS

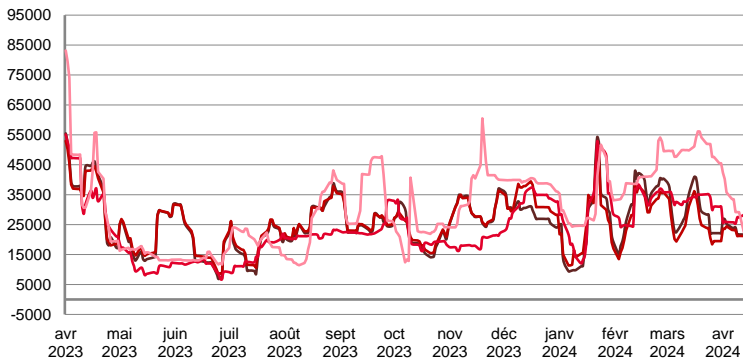
CPP

WORLDSCALE



	TODAY	WEDNESDAY	DAILY TREND	MTD AVERAGE
UKC / STATES 37kT	175,0	180,0	▼	185,7
UKC / WAF 33kT	205,0	210,0	▼	212,9
BALTIC / UKC 30kT	265,0	260,0	▲	243,2
BSEA / MED 30kT	335,0	220,0	▲	261,1

TIME CHARTER EQUIVALENT (\$/DAY)

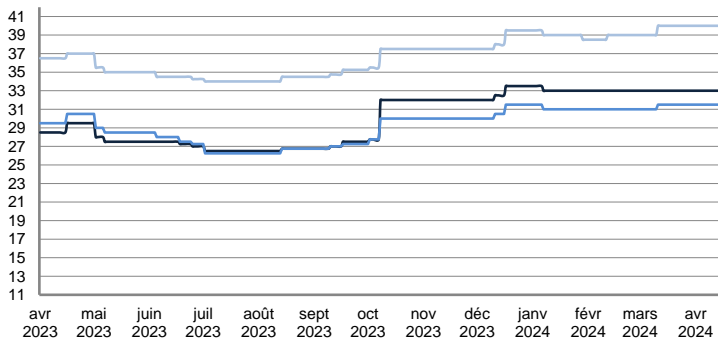


	TODAY	WEDNESDAY	DAILY TREND	MTD AVERAGE
UKC / STATES 37kT	20 424,0	19 851,0	▲	23020,1
UKC / WAF 33kT	20 058,0	19 355,0	▲	21748,9
BALTIC / UKC 30kT	32 660,0	30 106,0	▲	28087,1
BSEA / MED 30kT	50 731,0	26 013,0	▲	34870,9

SMALL TANKERS

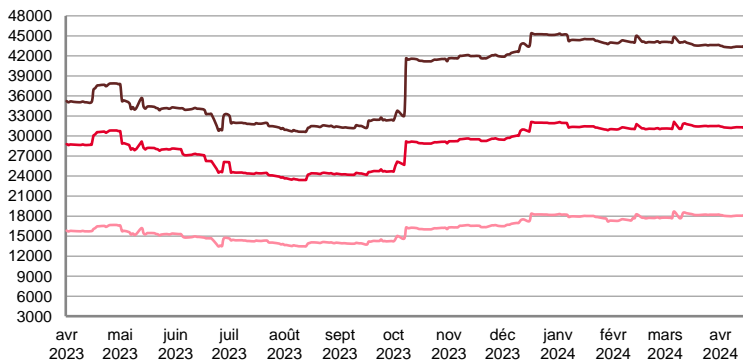
DPP

\$ / T



	TODAY	WEDNESDAY	DAILY TREND	MTD AVERAGE
BALTIC / UKC 15kT	33,0	33,0	▬	33,0
BALTIC / UKC 12kT	31,5	31,5	▬	31,5
BALTIC / UKC 6kT	40,0	40,0	▬	40,0

TIME CHARTER EQUIVALENT (\$/DAY)

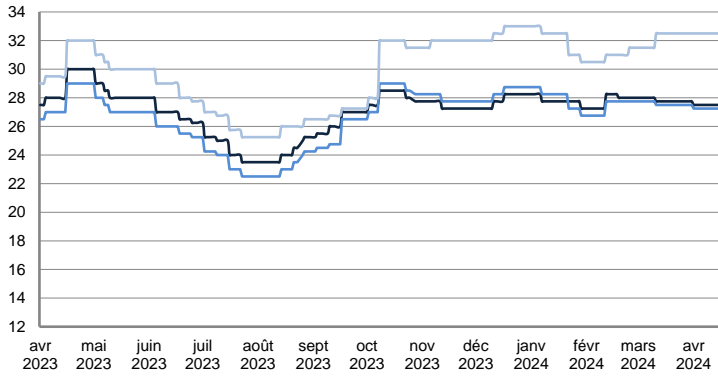


	TODAY	WEDNESDAY	DAILY TREND	MTD AVERAGE
BALTIC / UKC 15kT	43 380,0	42 390,0	▲	43341,6
BALTIC / UKC 10kT	31 317,0	30 518,0	▲	31276,1
BALTIC / UKC 6kT	18 070,0	17 426,0	▲	18033,9

SMALL TANKERS

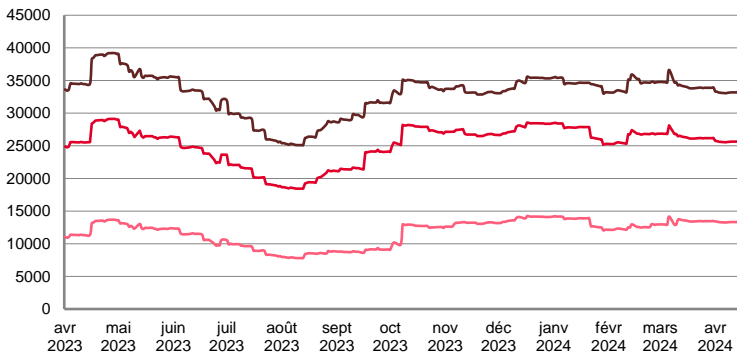
CPP

\$ / T



	TODAY	WEDNESDAY	DAILY TREND	MTD AVERAGE
BALTIC / UKC 15KT	27,5	27,5	▬	27,5
BALTIC / UKC 12KT	27,3	27,3	▬	27,3
BALTIC / UKC 6KT	32,5	32,5	▬	32,5

TIME CHARTER EQUIVALENT (\$/DAY)

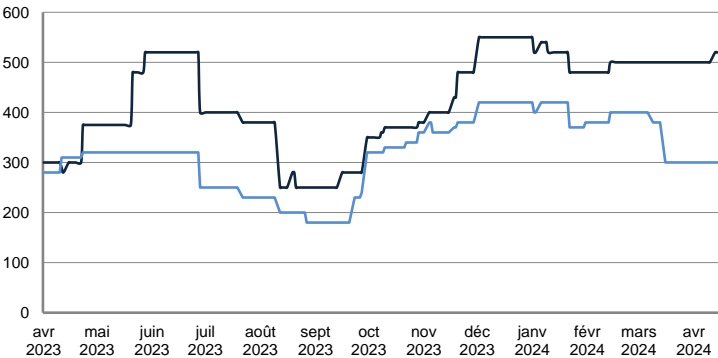


	TODAY	WEDNESDAY	DAILY TREND	MTD AVERAGE
BALTIC / UKC 15KT	33 216,0	32 237,0	▲	33217,2
BALTIC / UKC 12KT	25 656,0	24 902,0	▲	25660,6
BALTIC / UKC 6KT	13 347,0	12 769,0	▲	13304,4

SMALL TANKERS - AFRICA

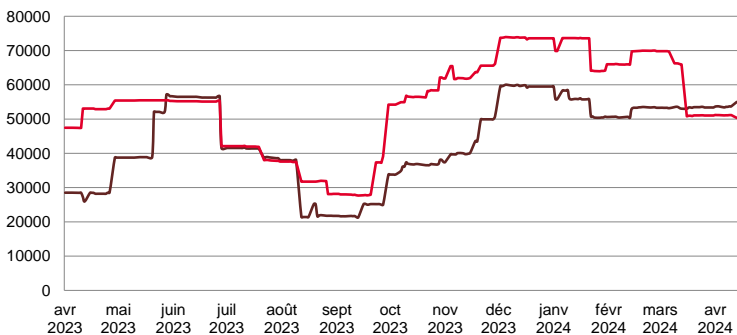
CPP

LUMPSUM (000's US\$)



	TODAY	WEDNESDAY	DAILY TREND	MTD AVERAGE
XWAF 15kT	520 000,0	520 000,0	▬	505714,3
XWAF 10kT	300 000,0	300 000,0	▬	300000,0

TIME CHARTER EQUIVALENT (\$/DAY)



	TODAY	WEDNESDAY	DAILY TREND	MTD AVERAGE
XWAF 15kT	56 079,0	56 134,0	▼	54132,4
XWAF 10kT	51 084,0	51 103,0	▼	51005,9

Disclaimer:

This publication has been prepared by Riverlake.

While every care has been taken to ensure the accuracy of the information contained in the document, Riverlake does not assume or accept any responsibility for the correctness or completeness of the material set out herein. The rates contained in this publication are indicative only and are subject to change without notice.

The views expressed do not necessarily reflect the views of Riverlake or any of the Riverlake affiliated companies. It should not be seen or regarded as a business recommendation or a solicitation to do business.

This publication is copyright of Riverlake. Unauthorised reproduction or redistribution is prohibited unless approved by Riverlake.