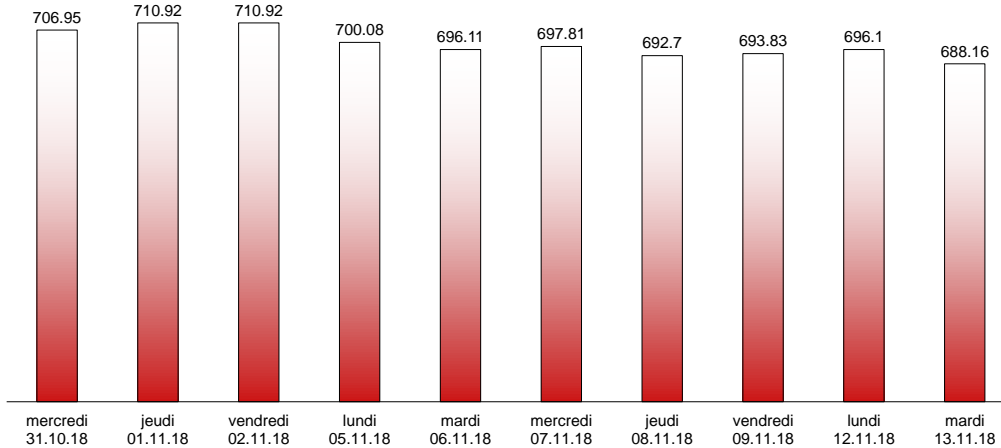


13.11.2018

**RIVERLAKE european TANKER INDEX (ReTI)\***



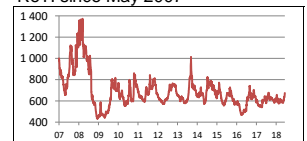
ReTI values

Max	24.07.08	1372.70
Today		688.16
Min	28.04.09	431.82

ReTI trends

daily	-7.94
avg last decade	20.67
avg last 30 days	74.85

ReTI since May 2007



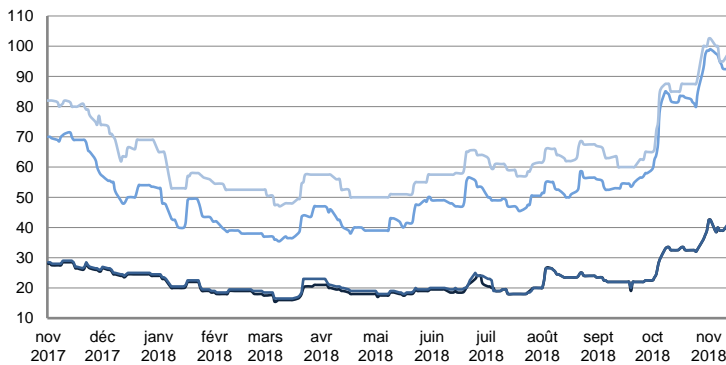
\* The Riverlake european Tanker Index (ReTI) is a composite index. All main European tanker movements are represented being six crude oil tanker routes, six clean petroleum products tanker routes and five dirty petroleum tanker routes. The oil tanker stems represented are between 6'000 MT to 135'000 MT. It covers all regions in Europe including the North Sea, Baltic Sea, UKContinent, Mediterranean and Black Sea.

**RIVERLAKE TANKER INDEX (RTI)**

**CRUDE OIL TANKERS**

VLCC

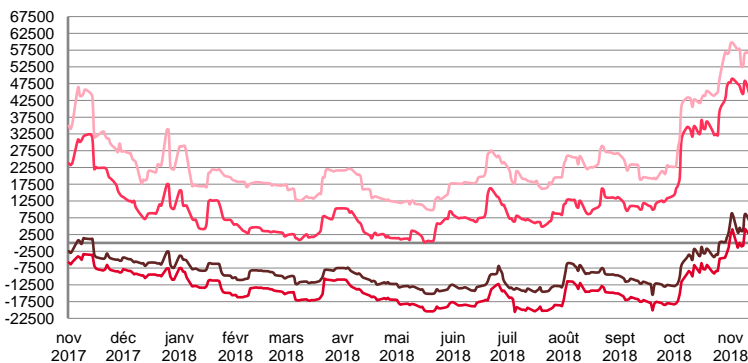
**WORLDSCALE**



	TODAY	MONDAY	WEEKLY TREND	MTD AVERAGE
AG / USG 280kT	41.0	41.0	▲	40.3
AG / UKC 280kT	41.5	41.5	▲	40.4
AG / EAST 270kT	92.5	92.5	▲	95.4
WAF / USG 260kT	95.0	97.5	▲	98.1

For detailed information, visit our website :  
Riverlake Online Timecharter Equivalent Calculation :  
<http://www.riverlake.ch/en/utilities/rticalc.php>

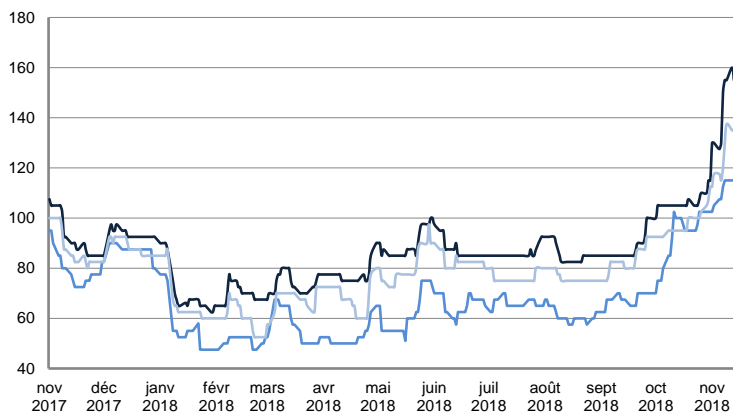
**TIME CHARTER EQUIVALENT (\$/DAY)**



	TODAY	MONDAY	WEEKLY TREND	MTD AVERAGE
AG / USG 280kT	6 178.0	6 019.0	▲	5682.6
AG / UKC 280kT	2 305.0	2 138.0	▲	1308.8
AG / EAST 270kT	43 727.0	43 531.0	▲	46268.4
WAF / USG 260kT	53 659.0	56 114.0	▲	56256.4

**SUEZMAX**

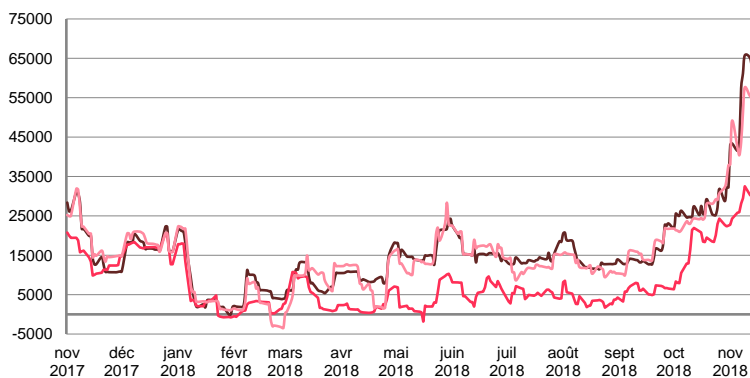
**WORLDSCALE**



	TODAY	MONDAY	WEEKLY TREND	MTD AVERAGE
—BSEA / MED 135KT	155.0	160.0	▲	143.6
—WAF / USG 130KT	115.0	115.0	▲	98.1
—XMED 135KT	135.0	135.0	▲	124.4

For detailed information, visit our website :  
Riverlake Online Timecharter Equivalent Calculation :  
<http://www.riverlake.ch/en/utilities/rticalc.php>

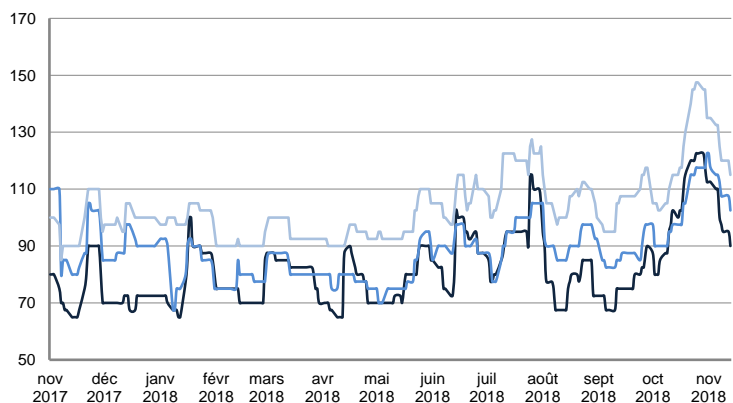
**TIME CHARTER EQUIVALENT (\$/DAY)**



	TODAY	MONDAY	WEEKLY TREND	MTD AVERAGE
—BSEA / MED 135KT	61 585.0	64 968.0	▲	53601.4
—WAF / USG 130KT	30 179.0	30 204.0	▲	27706.1
—XMED 135KT	56 219.0	55 316.0	▲	48227.0

**AFRAMAX**

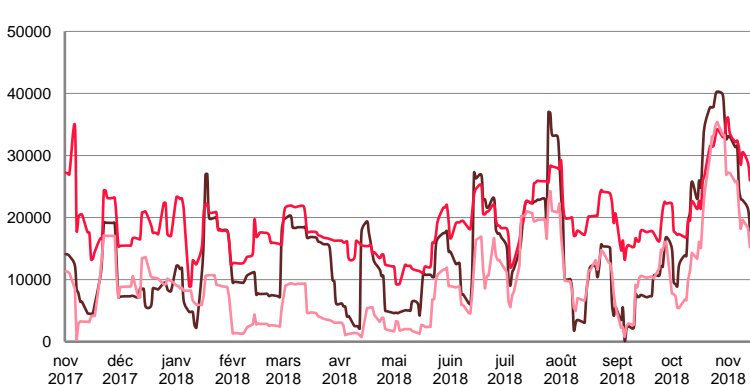
**WORLDSCALE**



	TODAY	MONDAY	WEEKLY TREND	MTD AVERAGE
—BALTIC / UKC 100KT	90.0	95.0	▼	102.5
—BALTIC / STATES 100KT	102.5	107.5	▲	111.9
—NSEA / UKC 80KT	115.0	120.0	▼	126.1

For detailed information, visit our website :  
Riverlake Online Timecharter Equivalent Calculation :  
<http://www.riverlake.ch/en/utilities/rticalc.php>

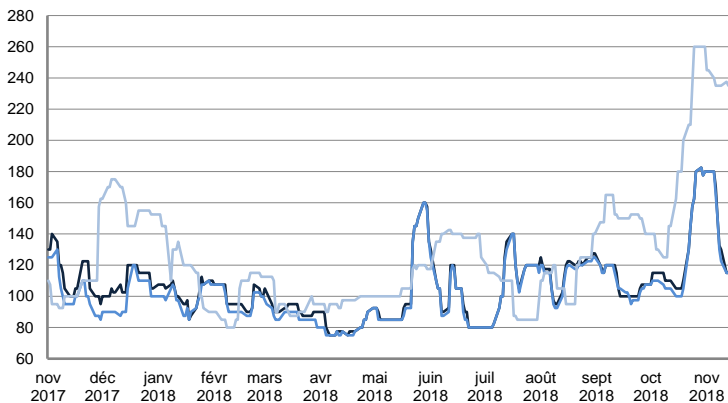
**TIME CHARTER EQUIVALENT (\$/DAY)**



	TODAY	MONDAY	WEEKLY TREND	MTD AVERAGE
—BALTIC / UKC 100KT	17 933.0	21 333.0	▼	26532.1
—BALTIC / STATES 100KT	25 996.0	28 723.0	▲	31021.7
—NSEA / UKC 80KT	15 205.0	18 279.0	▼	22072.8

**AFRAMAX**

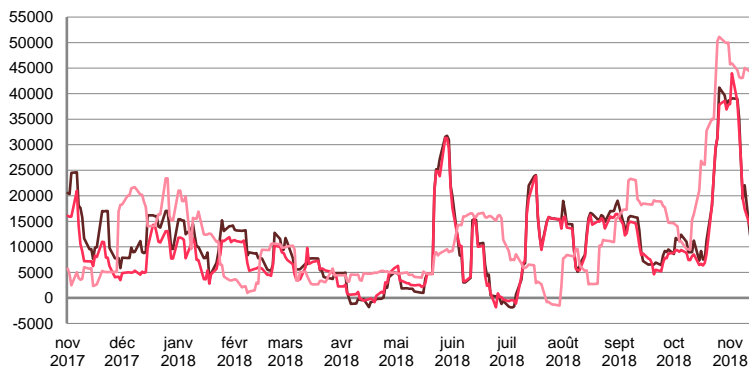
**WORLDSCALE**



	TODAY	MONDAY	WEEKLY TREND	MTD AVERAGE
—BSEA / MED 80kT	115.0	115.0	▲	150.3
—XMED 80kT	115.0	115.0	▲	148.6
—CAR / USA 70kT	235.0	237.5	▲	238.1

For detailed information, visit our website :  
Riverlake Online Timecharter Equivalent Calculation :  
<http://www.riverlake.ch/en/utilities/rticalc.php>

**TIME CHARTER EQUIVALENT (\$/DAY)**

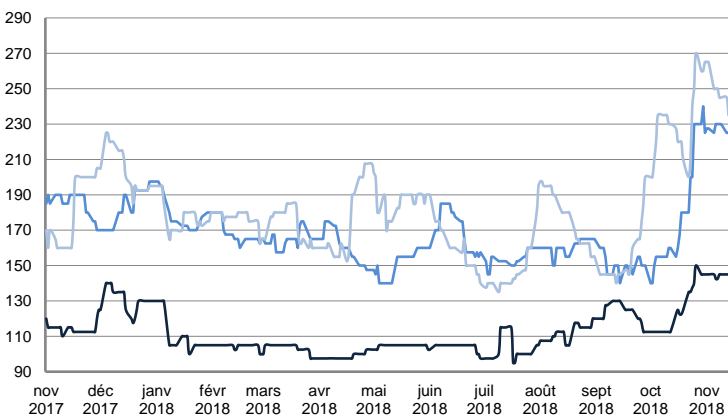


	TODAY	MONDAY	WEEKLY TREND	MTD AVERAGE
—BSEA / MED 80kT	12 375.0	12 258.0	▲	27159.0
—XMED 80kT	14 859.0	14 120.0	▲	27302.2
—CAR / USA 70kT	43 575.0	44 324.0	▲	44292.2

PRODUCT TANKERS

**DPP**

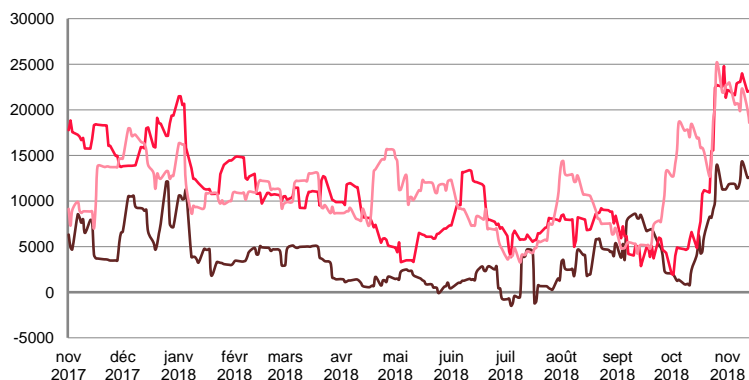
**WORLDSCALE**



	TODAY	MONDAY	WEEKLY TREND	MTD AVERAGE
—BALTIC / STATES 55kT	145.0	145.0	▲	144.4
—BALTIC / UKC 30kT	225.0	225.0	▲	227.8
—BSEA / MED 30kT	235.0	245.0	▲	250.0

For detailed information, visit our website :  
Riverlake Online Timecharter Equivalent Calculation :  
<http://www.riverlake.ch/en/utilities/rticalc.php>

**TIME CHARTER EQUIVALENT (\$/DAY)**

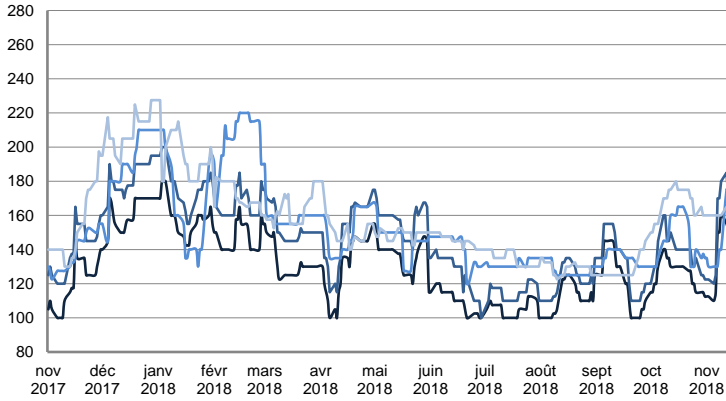


	TODAY	MONDAY	WEEKLY TREND	MTD AVERAGE
—BALTIC / STATES 55kT	12 609.0	12 560.0	▲	12231.4
—BALTIC / UKC 30kT	22 076.0	21 976.0	▲	22542.2
—BSEA / MED 30kT	18 577.0	20 076.0	▲	20957.6

PRODUCT TANKERS

CPP

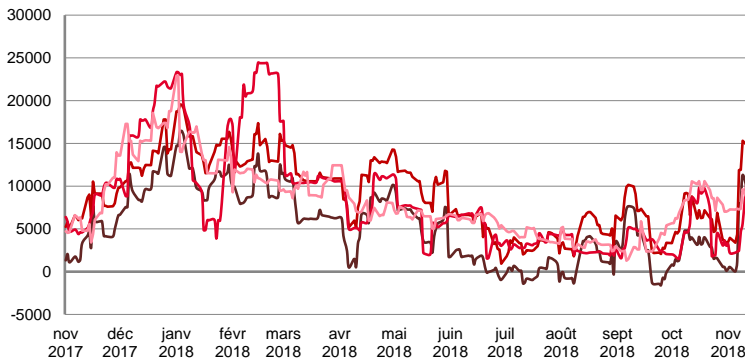
WORLDSCALE



	TODAY	MONDAY	WEEKLY TREND	MTD AVERAGE
—UKC / STATES 37kT	150.0	155.0	▲	135.0
—UKC / WAF 33kT	170.0	185.0	▲	151.7
—BALTIC / UKC 30kT	170.0	175.0	▼	142.2
—BSEA / MED 30kT	165.0	165.0	▼	161.1

For detailed information, visit our website :  
Riverlake Online Timecharter Equivalent Calculation :  
<http://www.riverlake.ch/en/utilities/rticalc.php>

TIME CHARTER EQUIVALENT (\$/DAY)

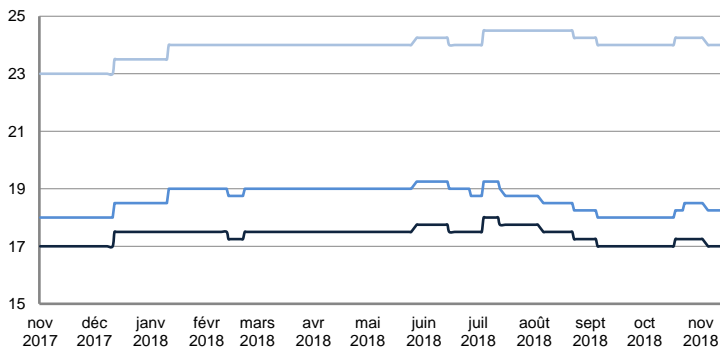


	TODAY	MONDAY	WEEKLY TREND	MTD AVERAGE
—UKC / STATES 37kT	8 136.0	9 072.0	▲	5153.3
—UKC / WAF 33kT	12 111.0	14 648.0	▲	9001.6
—BALTIC / UKC 30kT	11 313.0	12 325.0	▼	5159.2
—BSEA / MED 30kT	8 354.0	8 289.0	▼	7771.6

SMALL TANKERS

DPP

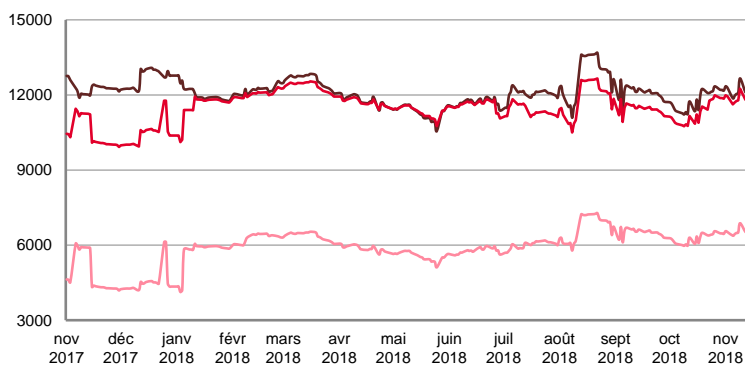
\$/T



	TODAY	MONDAY	WEEKLY TREND	MTD AVERAGE
—BALTIC / UKC 15kT	17.0	17.0	▼	17.1
—BALTIC / UKC 12kT	18.3	18.3	■	18.3
—BALTIC / UKC 6kT	24.0	24.0	▼	24.1

For detailed information, visit our website :  
Riverlake Online Timecharter Equivalent Calculation :  
<http://www.riverlake.ch/en/utilities/rticalc.php>

TIME CHARTER EQUIVALENT (\$/DAY)

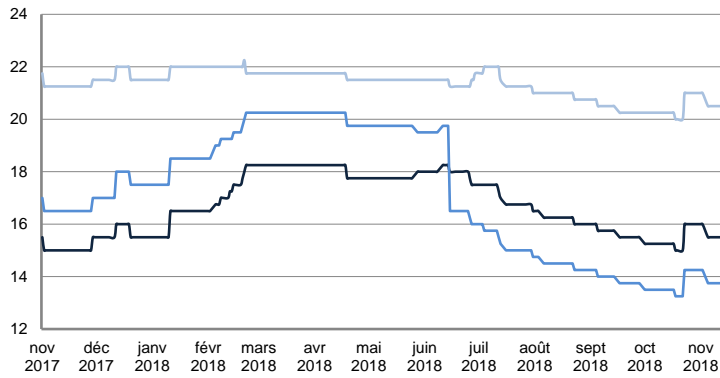


	TODAY	MONDAY	WEEKLY TREND	MTD AVERAGE
—BALTIC / UKC 15kT	12 167.0	12 104.0	▲	12168.6
—BALTIC / UKC 10kT	11 860.0	11 810.0	▲	11857.9
—BALTIC / UKC 6kT	6 565.0	6 525.0	▲	6539.4

SMALL TANKERS

CPP

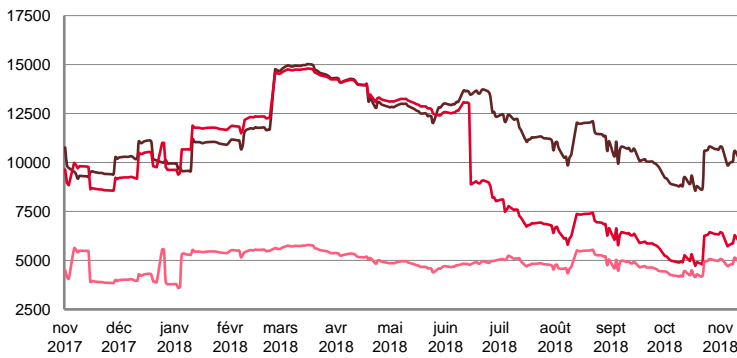
\$ / T



	TODAY	MONDAY	WEEKLY TREND	MTD AVERAGE
BALTIC / UKC 15kT	15.5	15.5	▲	15.6
BALTIC / UKC 12kT	13.8	13.8	▲	13.9
BALTIC / UKC 6kT	20.5	20.5	▲	20.6

For detailed information, visit our website :  
Riverlake Online Timecharter Equivalent Calculation :  
<http://www.riverlake.ch/en/utilities/rticalc.php>

TIME CHARTER EQUIVALENT (\$/DAY)

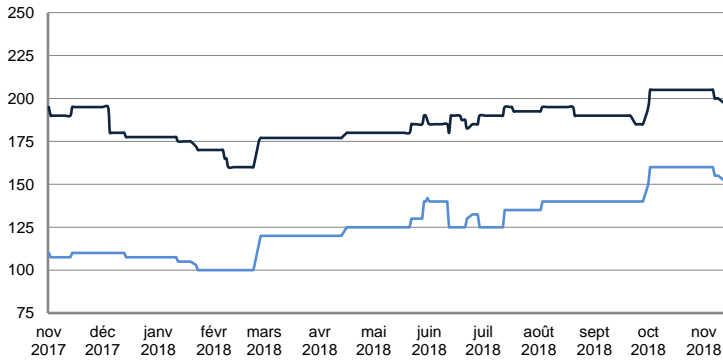


	TODAY	MONDAY	WEEKLY TREND	MTD AVERAGE
BALTIC / UKC 15kT	10 137.0	10 078.0	▲	10252.2
BALTIC / UKC 12kT	5 935.0	5 889.0	▲	6020.3
BALTIC / UKC 6kT	4 873.0	4 838.0	▲	4896.3

SMALL TANKERS - AFRICA

CPP

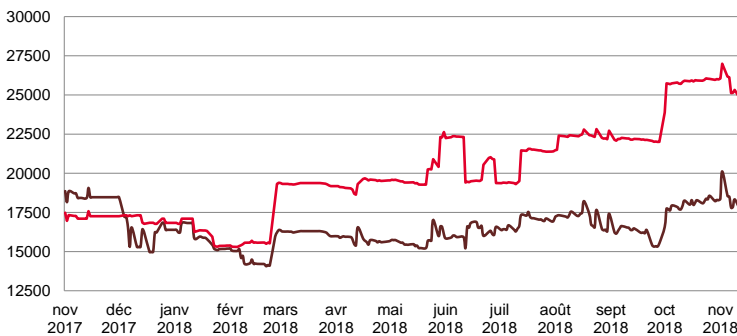
LUMPSUM (000's US\$)



	TODAY	MONDAY	WEEKLY TREND	MTD AVERAGE
XWAF 15kT	197 500.0	197 500.0	▼	201666.7
XWAF 10kT	152 500.0	152 500.0	▼	156666.7

For detailed information, visit our website :  
Riverlake Online Timecharter Equivalent Calculation :  
<http://www.riverlake.ch/en/utilities/rticalc.php>

TIME CHARTER EQUIVALENT (\$/DAY)



	TODAY	MONDAY	WEEKLY TREND	MTD AVERAGE
XWAF 15kT	17 940.0	17 698.0	▲	18353.9
XWAF 10kT	24 905.0	24 769.0	▼	25621.3

For other RTI's, fixture reports, analysis and forecasts go to [www.riverlake.ch](http://www.riverlake.ch).

Disclaimer:  
This report has been prepared by Riverlake Shipping S.A. The rates contained herein are indicative only. Rate indications are as of the date of publication and are subject to change without notice. Riverlake Shipping S.A. does not assume any liability or responsibility for the correctness or completeness of the information contained herein. The above report is Copyright of Riverlake Shipping S.A. No unauthorised reproduction or redistribution without permission from Riverlake Shipping S.A.