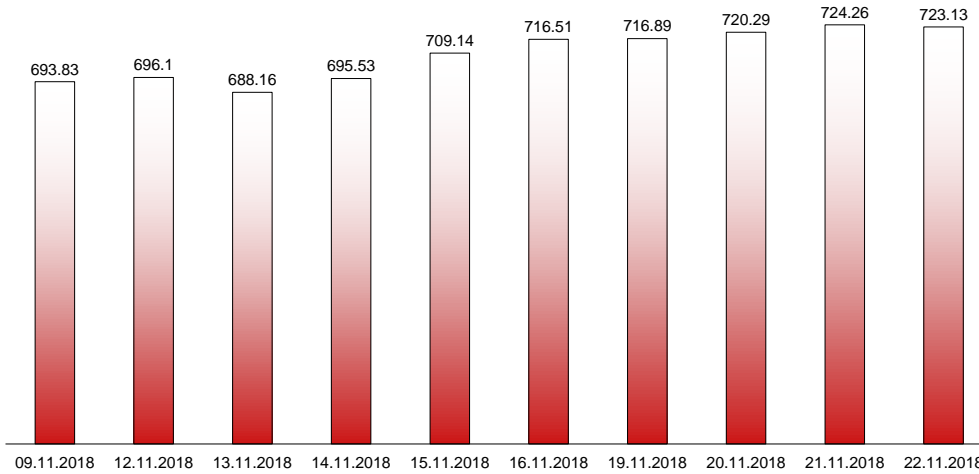


22.11.2018

RIVERLAKE european TANKER INDEX (ReTI)*



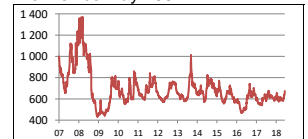
ReTI values

Max	24.07.08	1372.70
Today		723.13
Min	28.04.09	431.82

ReTI trends

daily	-1.13
avg last decade	3.16
avg last 30 days	89.60

ReTI since May 2007



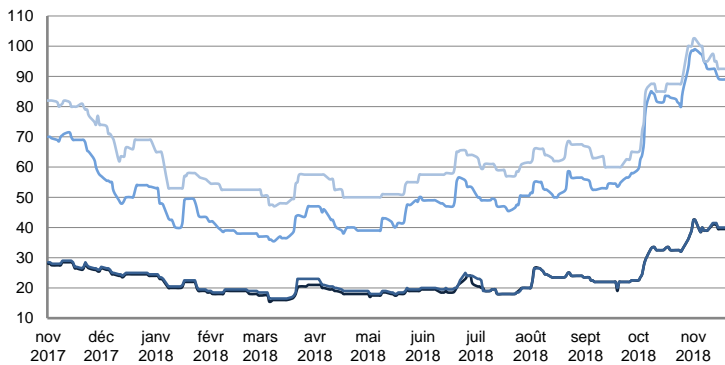
* The Riverlake european Tanker Index (ReTI) is a composite index. All main European tanker movements are represented being six crude oil tanker routes, six clean petroleum products tanker routes and five dirty petroleum tanker routes. The oil tanker stems represented are between 6'000 MT to 135'000 MT. It covers all regions in Europe including the North Sea, Baltic Sea, UKContinent, Mediterranean and Black Sea.

RIVERLAKE TANKER INDEX (RTI)

CRUDE OIL TANKERS

VLCC

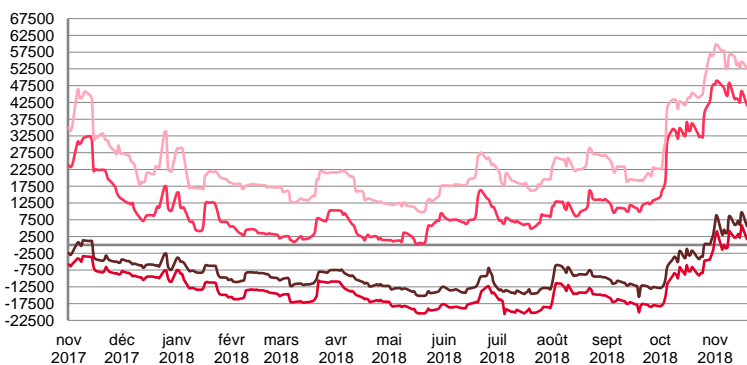
WORLDSCALE



	TODAY	WEDNESDAY	WEEKLY TREND	MTD AVERAGE
AG / USG 280kT	40.0	39.5	▲	40.1
AG / UKC 280kT	40.5	40.0	▲	40.3
AG / EAST 270kT	90.0	89.0	▲	92.8
WAF / USG 260kT	95.0	92.5	▲	95.9

For detailed information, visit our website :
Riverlake Online Timecharter Equivalent Calculation :
<http://www.riverlake.ch/en/utilities/rticalc.php>

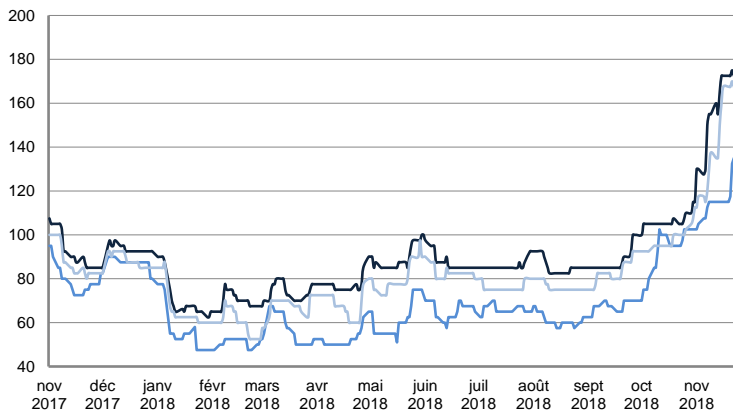
TIME CHARTER EQUIVALENT (\$/DAY)



	TODAY	WEDNESDAY	WEEKLY TREND	MTD AVERAGE
AG / USG 280kT	7 501.0	6 474.0	▲	6208.8
AG / UKC 280kT	3 581.0	2 494.0	▲	2026.4
AG / EAST 270kT	43 895.0	42 370.0	▲	44856.8
WAF / USG 260kT	56 290.0	53 215.0	▲	55187.9

SUEZMAX

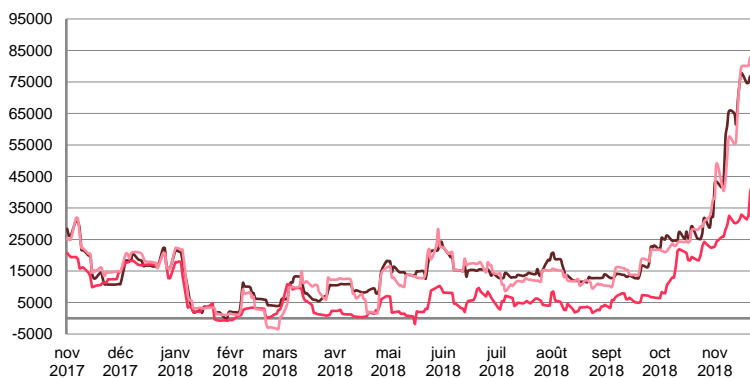
WORLDSCALE



	TODAY	WEDNESDAY	WEEKLY TREND	MTD AVERAGE
—BSEA / MED 135KT	172.5	175.0	▲	155.9
—WAF / USG 130KT	135.0	132.5	▲	95.9
—XMED 135KT	167.5	170.0	▲	141.9

For detailed information, visit our website :
Riverlake Online Timecharter Equivalent Calculation :
<http://www.riverlake.ch/en/utilities/rticalc.php>

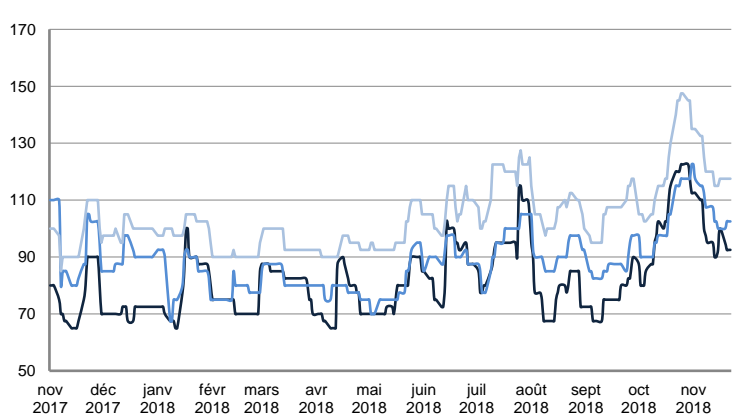
TIME CHARTER EQUIVALENT (\$/DAY)



	TODAY	WEDNESDAY	WEEKLY TREND	MTD AVERAGE
—BSEA / MED 135KT	75 145.0	76 849.0	▲	62855.8
—WAF / USG 130KT	42 193.0	40 437.0	▲	30673.6
—XMED 135KT	81 352.0	82 818.0	▲	61298.6

AFRAMAX

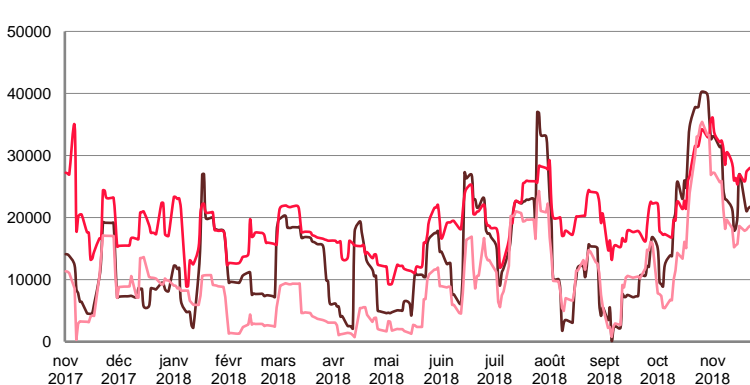
WORLDSCALE



	TODAY	WEDNESDAY	WEEKLY TREND	MTD AVERAGE
—BALTIC / UKC 100KT	92.5	92.5	▼	98.6
—BALTIC / STATES 100KT	102.5	102.5	▼	107.3
—NSEA / UKC 80KT	117.5	117.5	▼	122.0

For detailed information, visit our website :
Riverlake Online Timecharter Equivalent Calculation :
<http://www.riverlake.ch/en/utilities/rticalc.php>

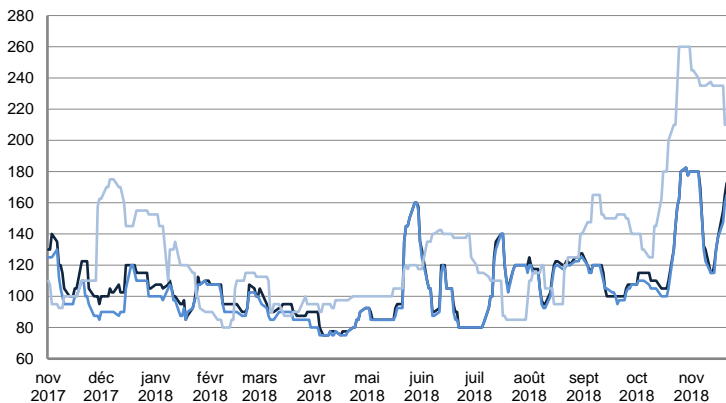
TIME CHARTER EQUIVALENT (\$/DAY)



	TODAY	WEDNESDAY	WEEKLY TREND	MTD AVERAGE
—BALTIC / UKC 100KT	21 729.0	21 450.0	▼	24448.7
—BALTIC / STATES 100KT	28 002.0	27 717.0	▲	29169.0
—NSEA / UKC 80KT	18 655.0	18 399.0	▼	20095.1

AFRAMAX

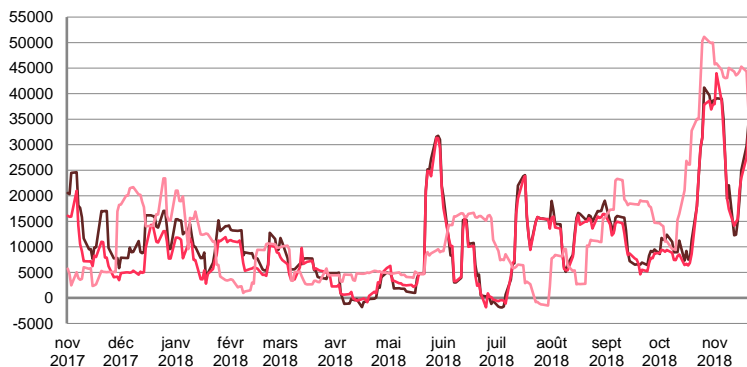
WORLDSCALE



	TODAY	WEDNESDAY	WEEKLY TREND	MTD AVERAGE
—BSEA / MED 80kT	172.5	172.5	▲	150.3
—XMED 80kT	165.0	165.0	▲	147.3
—CAR / USA 70kT	210.0	210.0	▲	232.0

For detailed information, visit our website :
Riverlake Online Timecharter Equivalent Calculation :
<http://www.riverlake.ch/en/utilities/rticalc.php>

TIME CHARTER EQUIVALENT (\$/DAY)

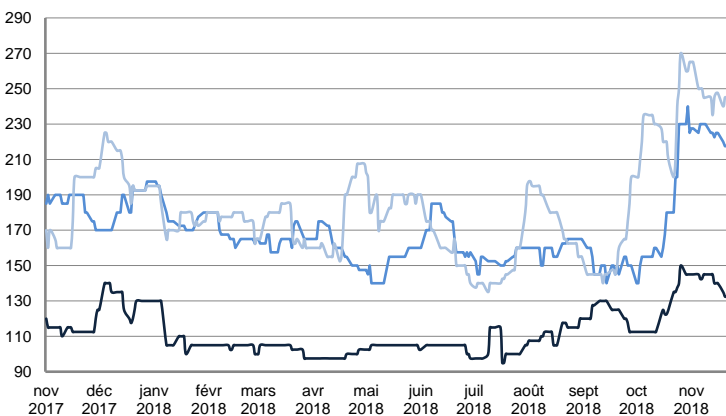


	TODAY	WEDNESDAY	WEEKLY TREND	MTD AVERAGE
—BSEA / MED 80kT	37 402.0	37 351.0	▲	27633.6
—XMED 80kT	35 266.0	35 044.0	▲	27254.6
—CAR / USA 70kT	37 494.0	37 174.0	▲	43005.6

PRODUCT TANKERS

DPP

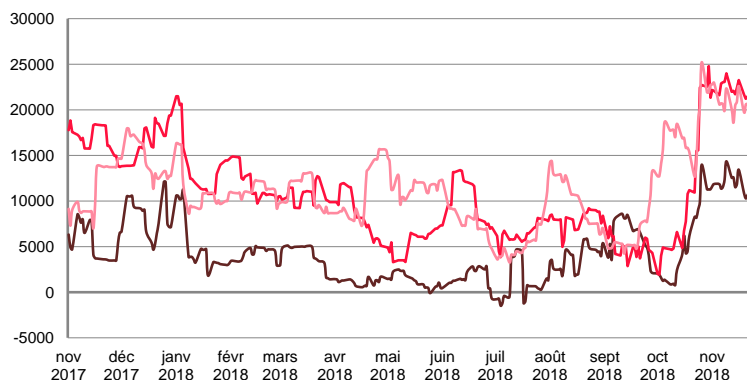
WORLDSCALE



	TODAY	WEDNESDAY	WEEKLY TREND	MTD AVERAGE
—BALTIC / STATES 55kT	132.5	132.5	▲	140.8
—BALTIC / UKC 30kT	217.5	217.5	▲	224.7
—BSEA / MED 30kT	245.0	245.0	▲	247.8

For detailed information, visit our website :
Riverlake Online Timecharter Equivalent Calculation :
<http://www.riverlake.ch/en/utilities/rticalc.php>

TIME CHARTER EQUIVALENT (\$/DAY)

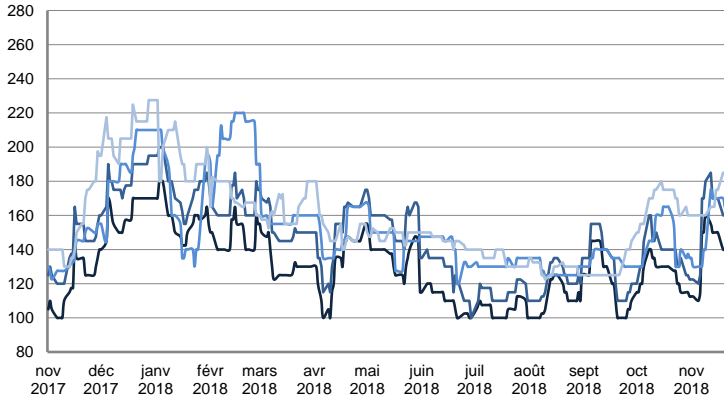


	TODAY	WEDNESDAY	WEEKLY TREND	MTD AVERAGE
—BALTIC / STATES 55kT	10 937.0	10 654.0	▲	11852.6
—BALTIC / UKC 30kT	21 641.0	21 467.0	▲	22266.7
—BSEA / MED 30kT	20 718.0	20 664.0	▲	20892.4

PRODUCT TANKERS

CPP

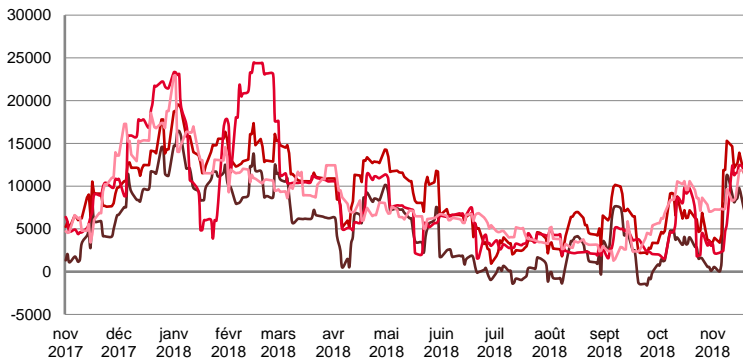
WORLDSCALE



	TODAY	WEDNESDAY	WEEKLY TREND	MTD AVERAGE
—UKC / STATES 37kT	140.0	140.0	▲	139.1
—UKC / WAF 33kT	160.0	160.0	▲	157.2
—BALTIC / UKC 30kT	165.0	165.0	■	153.4
—BSEA / MED 30kT	185.0	185.0	▼	169.1

For detailed information, visit our website :
Riverlake Online Timecharter Equivalent Calculation :
<http://www.riverlake.ch/en/utilities/rticalc.php>

TIME CHARTER EQUIVALENT (\$/DAY)

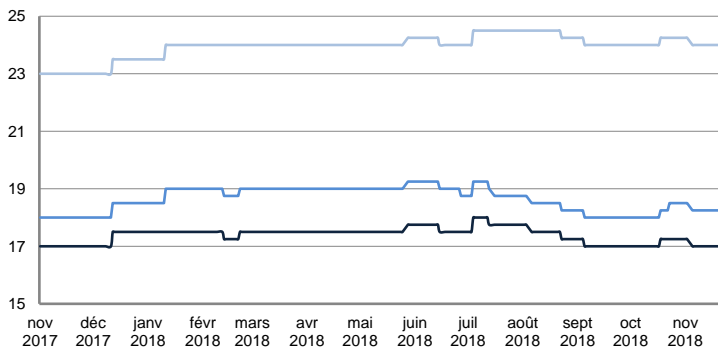


	TODAY	WEDNESDAY	WEEKLY TREND	MTD AVERAGE
—UKC / STATES 37kT	7 574.0	7 383.0	▲	6395.3
—UKC / WAF 33kT	11 692.0	11 510.0	▲	10361.7
—BALTIC / UKC 30kT	11 378.0	11 219.0	▲	7977.3
—BSEA / MED 30kT	12 028.0	11 978.0	▼	9278.9

SMALL TANKERS

DPP

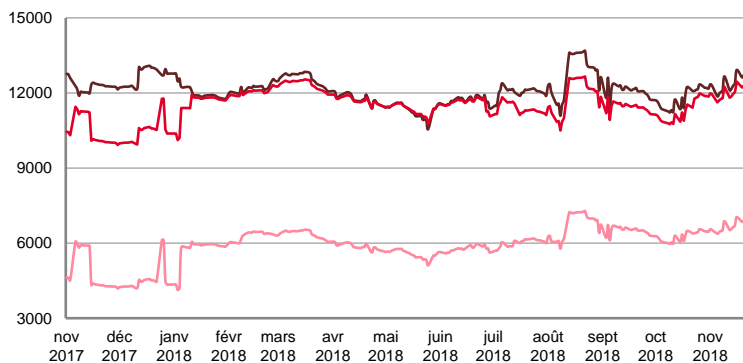
\$/T



	TODAY	WEDNESDAY	WEEKLY TREND	MTD AVERAGE
—BALTIC / UKC 15kT	17.0	17.0	▼	17.0
—BALTIC / UKC 12kT	18.3	18.3	▼	18.3
—BALTIC / UKC 6kT	24.0	24.0	▼	24.0

For detailed information, visit our website :
Riverlake Online Timecharter Equivalent Calculation :
<http://www.riverlake.ch/en/utilities/rticalc.php>

TIME CHARTER EQUIVALENT (\$/DAY)

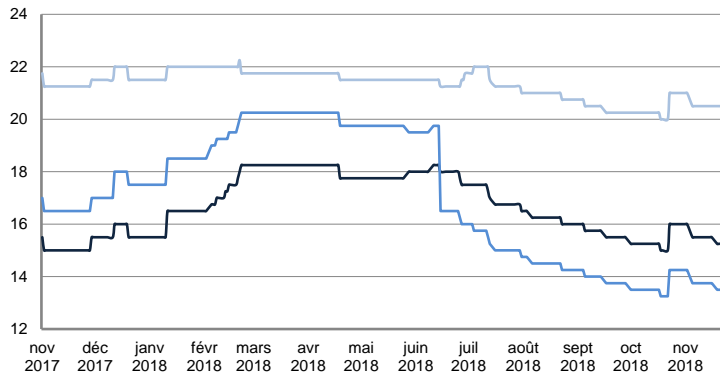


	TODAY	WEDNESDAY	WEEKLY TREND	MTD AVERAGE
—BALTIC / UKC 15kT	12 972.0	12 862.0	▲	12392.6
—BALTIC / UKC 10kT	12 493.0	12 406.0	▲	12035.5
—BALTIC / UKC 6kT	7 071.0	7 001.0	▲	6691.8

SMALL TANKERS

CPP

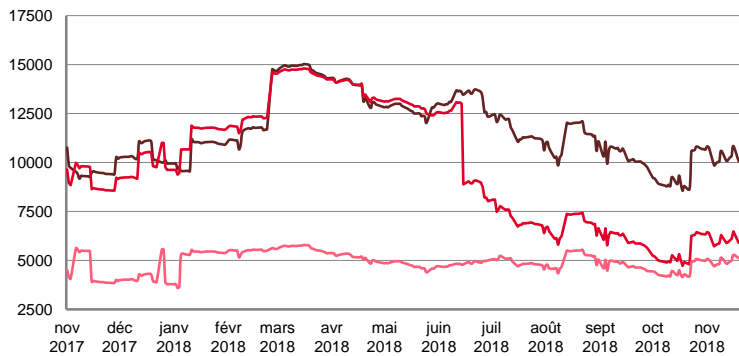
\$ / T



	TODAY	WEDNESDAY	WEEKLY TREND	MTD AVERAGE
BALTIC / UKC 15kT	15.3	15.3	▲	15.5
BALTIC / UKC 12kT	13.5	13.5	▲	13.8
BALTIC / UKC 6kT	20.5	20.5	▲	20.6

For detailed information, visit our website :
Riverlake Online Timecharter Equivalent Calculation :
<http://www.riverlake.ch/en/utilities/rtcalc.php>

TIME CHARTER EQUIVALENT (\$/DAY)

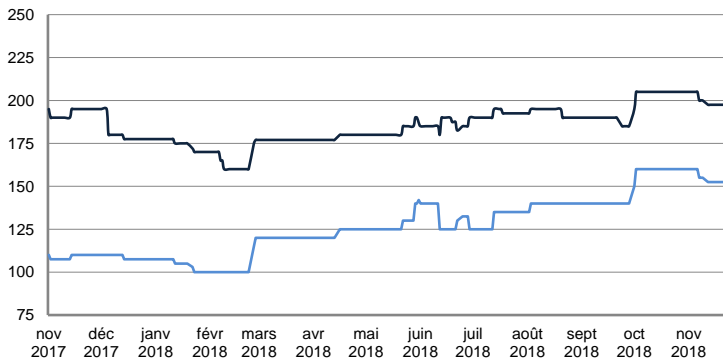


	TODAY	WEDNESDAY	WEEKLY TREND	MTD AVERAGE
BALTIC / UKC 15kT	10 405.0	10 302.0	▲	10290.5
BALTIC / UKC 12kT	6 154.0	6 074.0	▲	6054.6
BALTIC / UKC 6kT	5 311.0	5 251.0	▲	5008.3

SMALL TANKERS - AFRICA

CPP

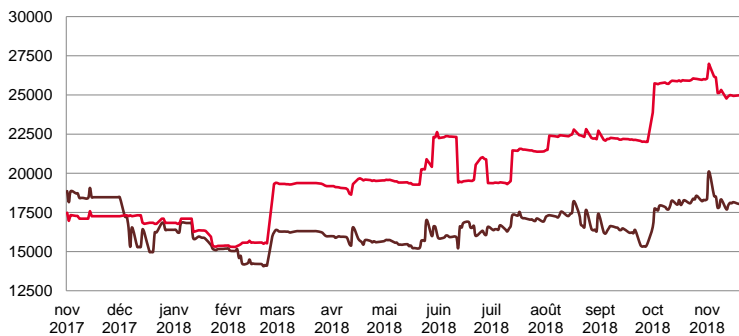
LUMPSUM (000's US\$)



	TODAY	WEDNESDAY	WEEKLY TREND	MTD AVERAGE
XWAF 15kT	197 500.0	197 500.0	▼	199843.8
XWAF 10kT	152 500.0	152 500.0	▼	154843.8

For detailed information, visit our website :
Riverlake Online Timecharter Equivalent Calculation :
<http://www.riverlake.ch/en/utilities/rtcalc.php>

TIME CHARTER EQUIVALENT (\$/DAY)



	TODAY	WEDNESDAY	WEEKLY TREND	MTD AVERAGE
XWAF 15kT	18 411.0	18 334.0	▲	18276.6
XWAF 10kT	25 182.0	25 122.0	▼	25359.9

For other RTI's, fixture reports, analysis and forecasts go to www.riverlake.ch.

Disclaimer:
This report has been prepared by Riverlake Shipping S.A. The rates contained herein are indicative only. Rate indications are as of the date of publication and are subject to change without notice. Riverlake Shipping S.A. does not assume any liability or responsibility for the correctness or completeness of the information contained herein. The above report is Copyright of Riverlake Shipping S.A. No unauthorised reproduction or redistribution without permission from Riverlake Shipping S.A.