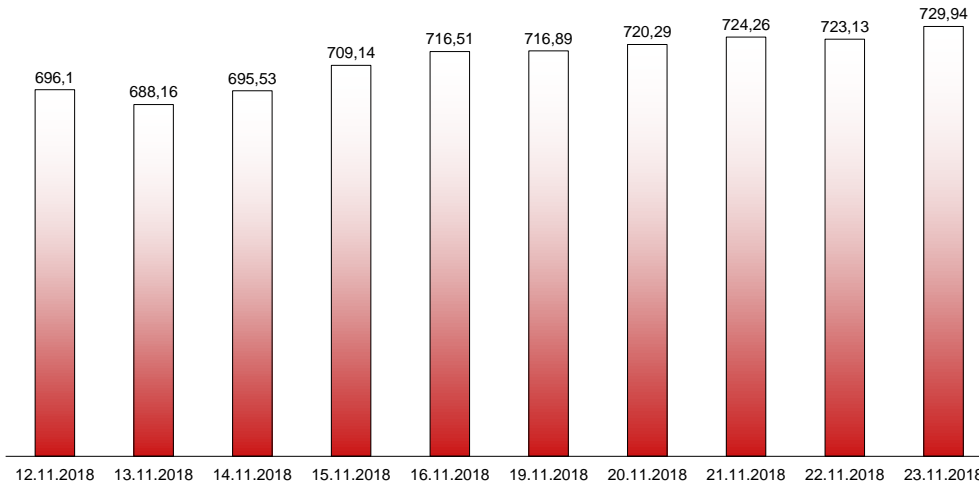


23.11.2018

**RIVERLAKE european TANKER INDEX (ReTI)\***



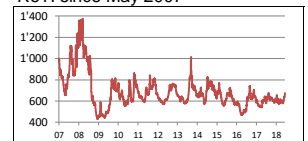
ReTI values

Max	24.07.08	<b>1372,70</b>
Today		<b>729,94</b>
Min	28.04.09	<b>431,82</b>

ReTI trends

daily	<b>6,81</b>
avg last decade	<b>8,77</b>
avg last 30 days	<b>91,37</b>

ReTI since May 2007



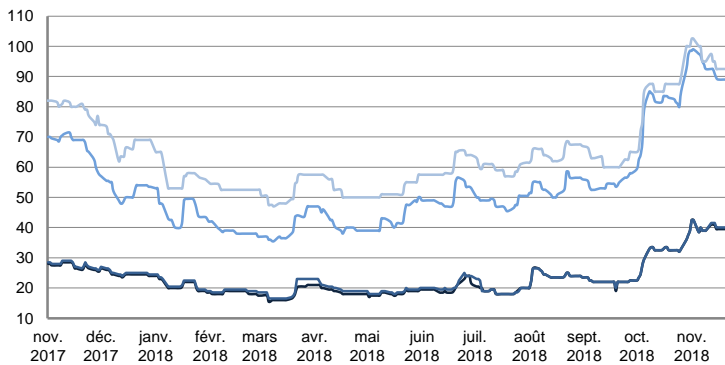
\* The Riverlake european Tanker Index (ReTI) is a composite index. All main European tanker movements are represented being six crude oil tanker routes, six clean petroleum products tanker routes and five dirty petroleum tanker routes. The oil tanker stems represented are between 6'000 MT to 135'000 MT. It covers all regions in Europe including the North Sea, Baltic Sea, UKContinent, Mediterranean and Black Sea.

**RIVERLAKE TANKER INDEX (RTI)**

**CRUDE OIL TANKERS**

**VLCC**

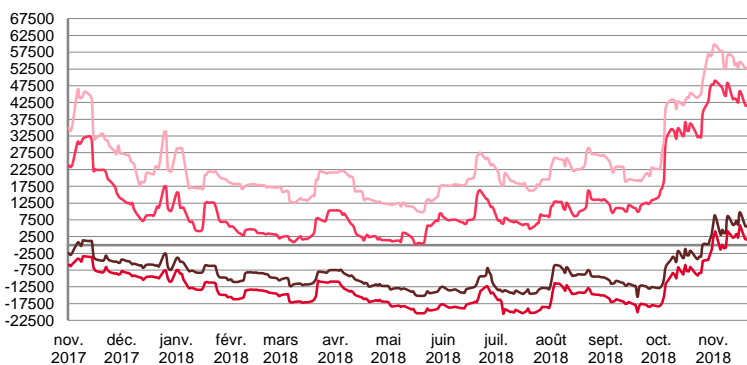
**WORLDSCALE**



	TODAY	THURSDAY	WEEKLY TREND	MTD AVERAGE
—AG / USG 280kT	40,5	40,0	▲	40,1
—AG / UKC 280kT	41,0	40,5	▲	40,4
—AG / EAST 270kT	91,0	90,0	▲	92,7
—WAF / USG 260kT	95,0	95,0	▲	95,9

For detailed information, visit our website :  
Riverlake Online Timecharter Equivalent Calculation :  
<http://www.riverlake.ch/en/utilities/rticalc.php>

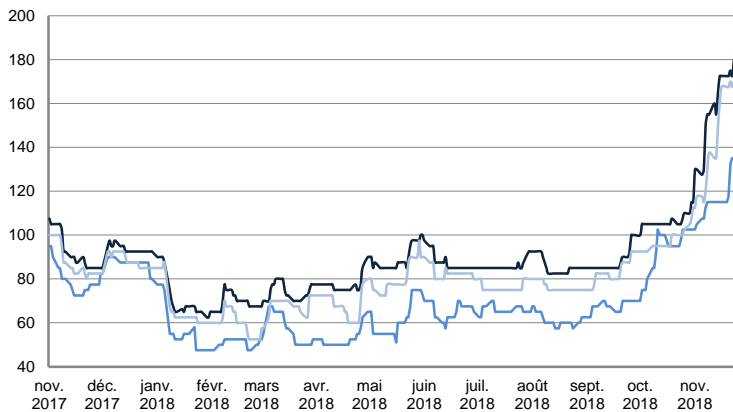
**TIME CHARTER EQUIVALENT (\$/DAY)**



	TODAY	THURSDAY	WEEKLY TREND	MTD AVERAGE
—AG / USG 280kT	14'231,0	7'501,0	▲	6680,7
—AG / UKC 280kT	10'360,0	3'581,0	▲	2516,6
—AG / EAST 270kT	51'045,0	43'895,0	▲	45220,8
—WAF / USG 260kT	60'710,0	56'290,0	▲	55512,8

**SUEZMAX**

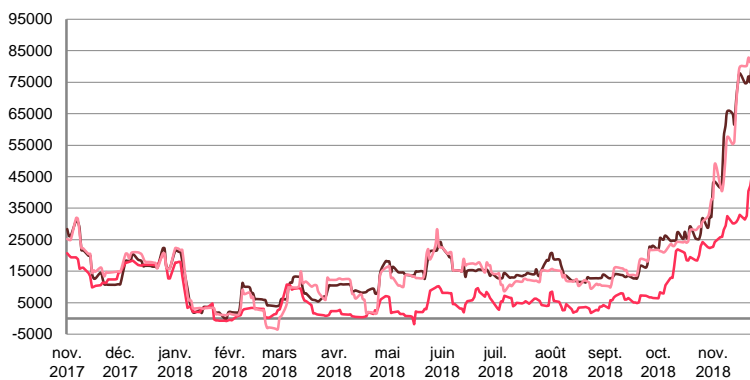
**WORLDSCALE**



	TODAY	THURSDAY	WEEKLY TREND	MTD AVERAGE
—BSEA / MED 135KT	180,0	172,5	▲	157,4
—WAF / USG 130KT	135,0	135,0	▲	95,9
—XMED 135KT	170,0	167,5	▲	143,5

For detailed information, visit our website :  
Riverlake Online Timecharter Equivalent Calculation :  
<http://www.riverlake.ch/en/utilities/rticalc.php>

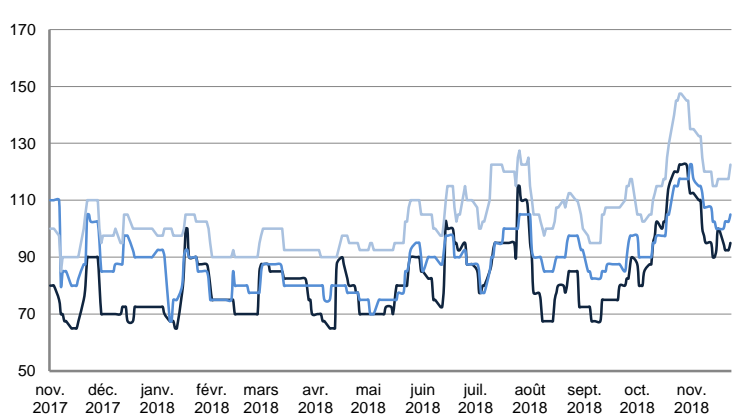
**TIME CHARTER EQUIVALENT (\$/DAY)**



	TODAY	THURSDAY	WEEKLY TREND	MTD AVERAGE
—BSEA / MED 135KT	85'385,0	75'145,0	▲	64181,0
—WAF / USG 130KT	45'654,0	42'193,0	▲	31554,8
—XMED 135KT	84'107,0	81'352,0	▲	62640,3

**AFRAMAX**

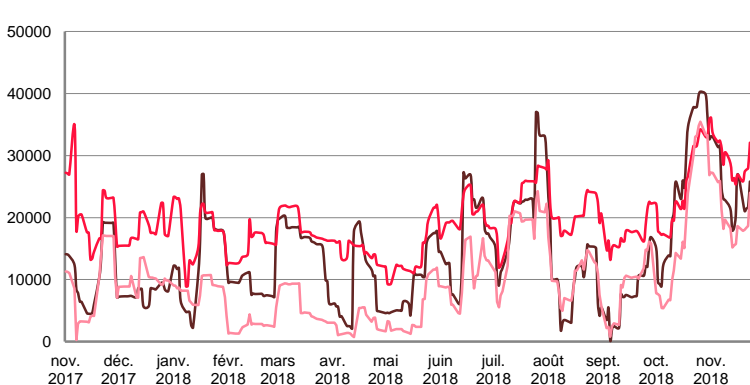
**WORLDSCALE**



	TODAY	THURSDAY	WEEKLY TREND	MTD AVERAGE
—BALTIC / UKC 100KT	95,0	92,5	▼	98,4
—BALTIC / STATES 100KT	105,0	102,5	▼	107,2
—NSEA / UKC 80KT	122,5	117,5	▼	122,1

For detailed information, visit our website :  
Riverlake Online Timecharter Equivalent Calculation :  
<http://www.riverlake.ch/en/utilities/rticalc.php>

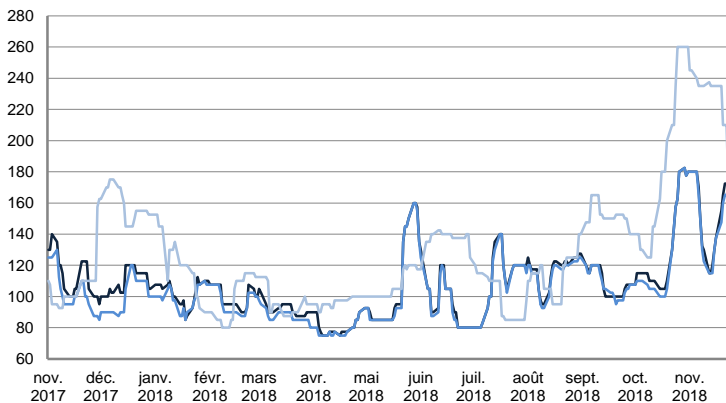
**TIME CHARTER EQUIVALENT (\$/DAY)**



	TODAY	THURSDAY	WEEKLY TREND	MTD AVERAGE
—BALTIC / UKC 100KT	25'808,0	21'729,0	▼	24528,6
—BALTIC / STATES 100KT	32'070,0	28'002,0	▲	29339,6
—NSEA / UKC 80KT	24'009,0	18'655,0	▼	20325,3

**AFRAMAX**

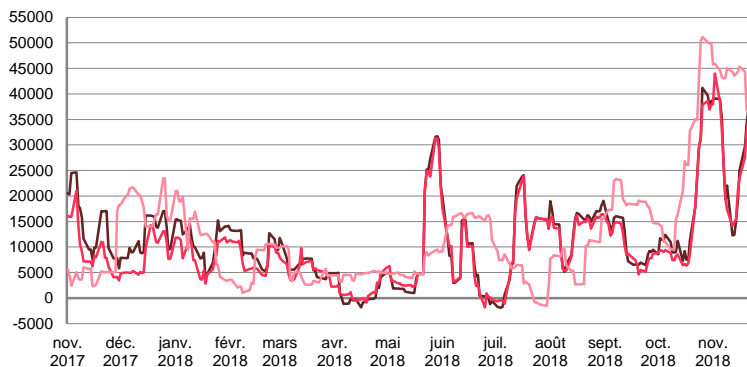
**WORLDSCALE**



	TODAY	THURSDAY	WEEKLY TREND	MTD AVERAGE
— BSEA / MED 80kT	172,5	172,5	▲	151,6
— XMED 80kT	170,0	165,0	▲	148,7
— CAR / USA 70kT	170,0	210,0	▲	228,4

For detailed information, visit our website :  
Riverlake Online Timecharter Equivalent Calculation :  
<http://www.riverlake.ch/en/utilities/rticalc.php>

**TIME CHARTER EQUIVALENT (\$/DAY)**

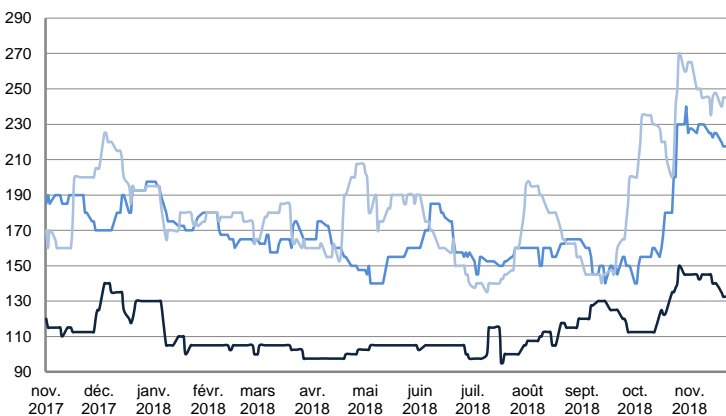


	TODAY	THURSDAY	WEEKLY TREND	MTD AVERAGE
— BSEA / MED 80kT	41'478,0	37'402,0	▲	28447,9
— XMED 80kT	37'975,0	35'266,0	▲	27885,2
— CAR / USA 70kT	27'875,0	37'494,0	▲	42115,6

PRODUCT TANKERS

**DPP**

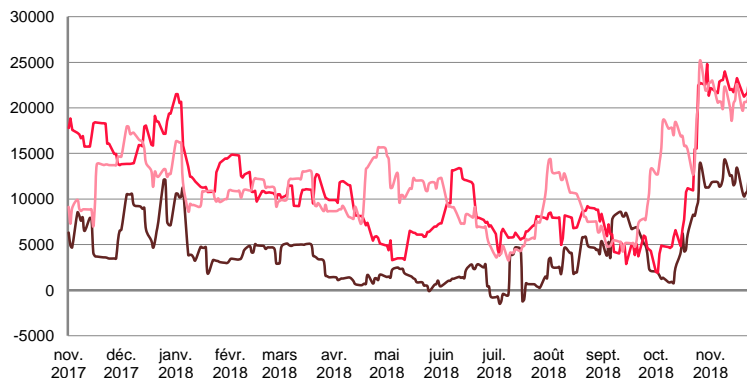
**WORLDSCALE**



	TODAY	THURSDAY	WEEKLY TREND	MTD AVERAGE
— BALTIC / STATES 55kT	132,5	132,5	▲	140,3
— BALTIC / UKC 30kT	220,0	217,5	▲	224,4
— BSEA / MED 30kT	242,5	245,0	▲	247,5

For detailed information, visit our website :  
Riverlake Online Timecharter Equivalent Calculation :  
<http://www.riverlake.ch/en/utilities/rticalc.php>

**TIME CHARTER EQUIVALENT (\$/DAY)**

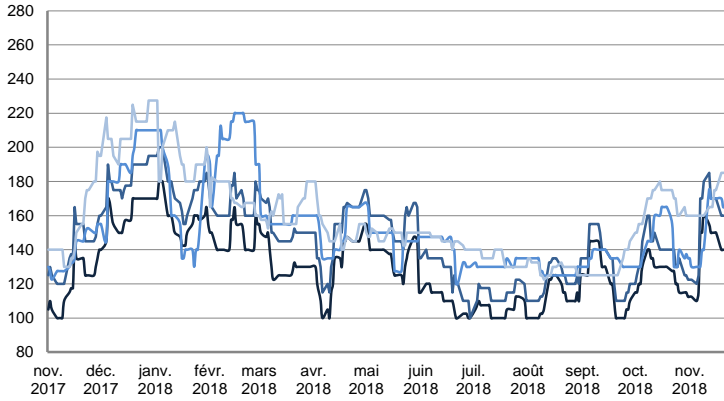


	TODAY	THURSDAY	WEEKLY TREND	MTD AVERAGE
— BALTIC / STATES 55kT	13'592,0	10'937,0	▲	11954,9
— BALTIC / UKC 30kT	23'621,0	21'641,0	▲	22346,4
— BSEA / MED 30kT	22'949,0	20'718,0	▲	21013,4

PRODUCT TANKERS

CPP

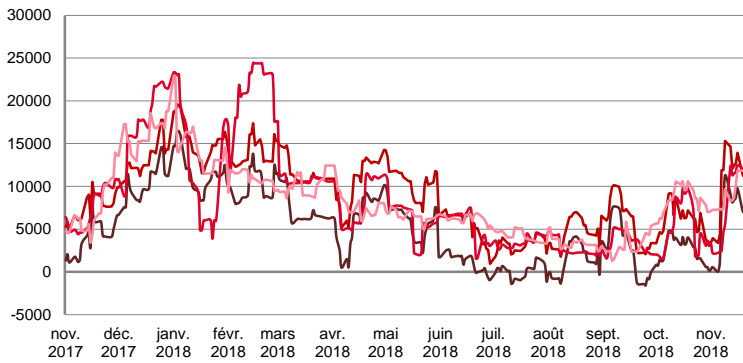
WORLDSCALE



	TODAY	THURSDAY	WEEKLY TREND	MTD AVERAGE
—UKC / STATES 37kT	142,5	140,0	▲	139,3
—UKC / WAF 33kT	162,5	160,0	▲	157,5
—BALTIC / UKC 30kT	160,0	165,0	▬	153,8
—BSEA / MED 30kT	195,0	185,0	▼	170,6

For detailed information, visit our website :  
Riverlake Online Timecharter Equivalent Calculation :  
<http://www.riverlake.ch/en/utilities/rticalc.php>

TIME CHARTER EQUIVALENT (\$/DAY)

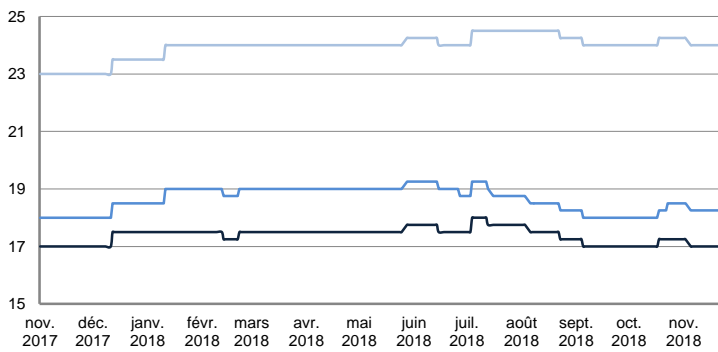


	TODAY	THURSDAY	WEEKLY TREND	MTD AVERAGE
—UKC / STATES 37kT	9'912,0	7'574,0	▲	6602,2
—UKC / WAF 33kT	14'146,0	11'692,0	▲	10584,3
—BALTIC / UKC 30kT	11'652,0	11'378,0	▲	8193,5
—BSEA / MED 30kT	16'058,0	12'028,0	▼	9677,7

SMALL TANKERS

DPP

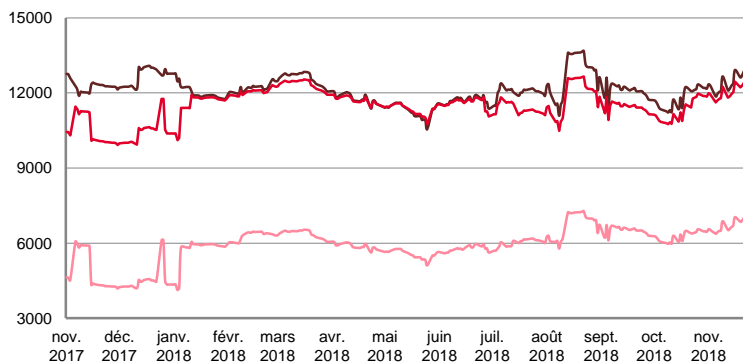
\$/T



	TODAY	THURSDAY	WEEKLY TREND	MTD AVERAGE
—BALTIC / UKC 15kT	17,0	17,0	▼	17,0
—BALTIC / UKC 12kT	18,3	18,3	▼	18,3
—BALTIC / UKC 6kT	24,0	24,0	▼	24,0

For detailed information, visit our website :  
Riverlake Online Timecharter Equivalent Calculation :  
<http://www.riverlake.ch/en/utilities/rticalc.php>

TIME CHARTER EQUIVALENT (\$/DAY)

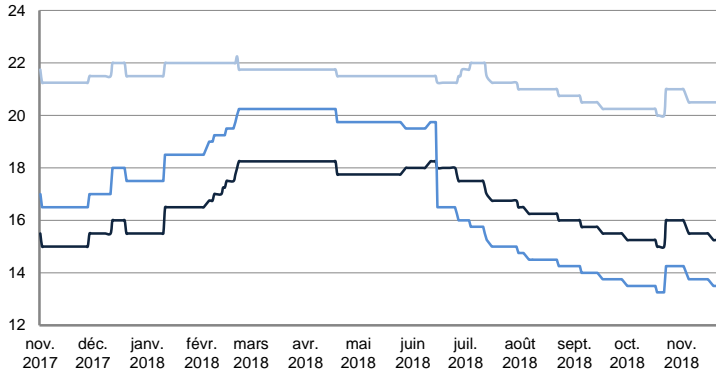


	TODAY	THURSDAY	WEEKLY TREND	MTD AVERAGE
—BALTIC / UKC 15kT	13'865,0	12'972,0	▲	12479,2
—BALTIC / UKC 10kT	13'195,0	12'493,0	▲	12103,7
—BALTIC / UKC 6kT	7'630,0	7'071,0	▲	6746,9

SMALL TANKERS

CPP

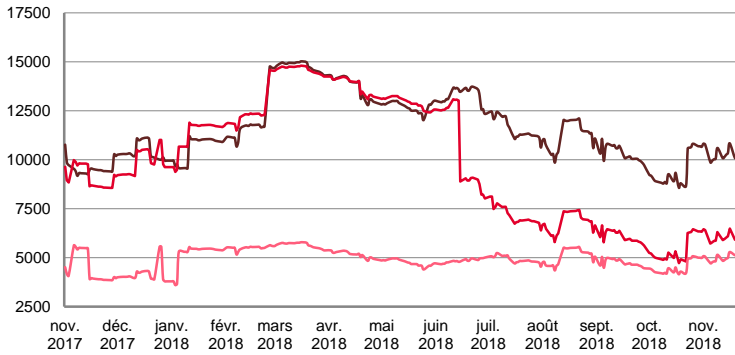
\$ / T



	TODAY	THURSDAY	WEEKLY TREND	MTD AVERAGE
BALTIC / UKC 15kT	15,3	15,3	↔	15,5
BALTIC / UKC 12kT	13,5	13,5	↔	13,7
BALTIC / UKC 6kT	20,5	20,5	↔	20,6

For detailed information, visit our website :  
Riverlake Online Timecharter Equivalent Calculation :  
<http://www.riverlake.ch/en/utilities/rtcalc.php>

TIME CHARTER EQUIVALENT (\$/DAY)

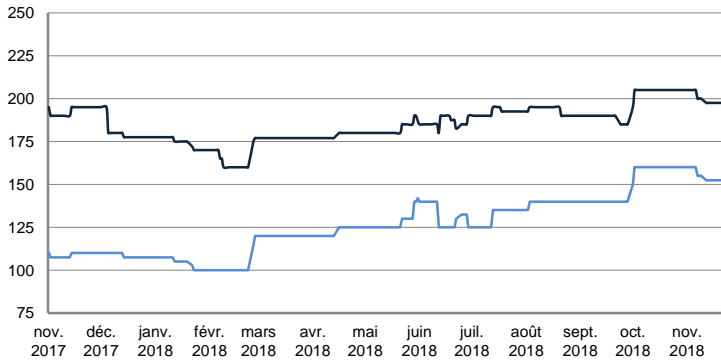


	TODAY	THURSDAY	WEEKLY TREND	MTD AVERAGE
BALTIC / UKC 15kT	11'235,0	10'405,0	▲	10346,1
BALTIC / UKC 12kT	6'800,0	6'154,0	▲	6098,5
BALTIC / UKC 6kT	5'796,0	5'311,0	▲	5054,6

SMALL TANKERS - AFRICA

CPP

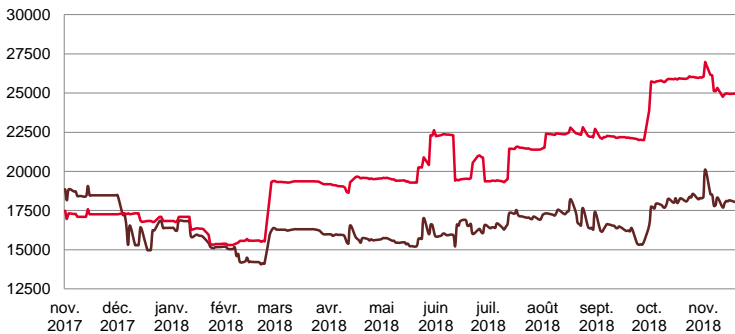
LUMPSUM (000's US\$)



	TODAY	THURSDAY	WEEKLY TREND	MTD AVERAGE
XWAF 15kT	197'500,0	197'500,0	▼	199705,9
XWAF 10kT	152'500,0	152'500,0	▼	154705,9

For detailed information, visit our website :  
Riverlake Online Timecharter Equivalent Calculation :  
<http://www.riverlake.ch/en/utilities/rtcalc.php>

TIME CHARTER EQUIVALENT (\$/DAY)



	TODAY	THURSDAY	WEEKLY TREND	MTD AVERAGE
XWAF 15kT	18'820,0	18'411,0	▲	18308,6
XWAF 10kT	25'300,0	25'182,0	▼	25356,4

For other RTI's, fixture reports, analysis and forecasts go to [www.riverlake.ch](http://www.riverlake.ch).

Disclaimer:  
This report has been prepared by Riverlake Shipping S.A. The rates contained herein are indicative only. Rate indications are as of the date of publication and are subject to change without notice.  
Riverlake Shipping S.A. does not assume any liability or responsibility for the correctness or completeness of the information contained herein.  
The above report is Copyright of Riverlake Shipping S.A.  
No unauthorised reproduction or redistribution without permission from Riverlake Shipping S.A.