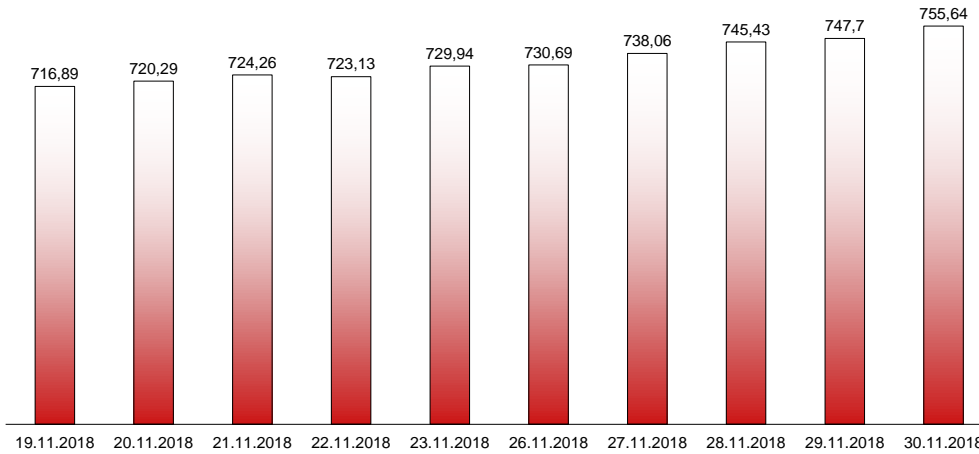


30.11.2018

RIVERLAKE european TANKER INDEX (ReTI)*



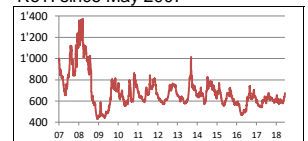
ReTI values

Max	24.07.08	1372,70
Today		755,64
Min	28.04.09	431,82

ReTI trends

daily	7,94
avg last decade	34,61
avg last 30 days	99,98

ReTI since May 2007



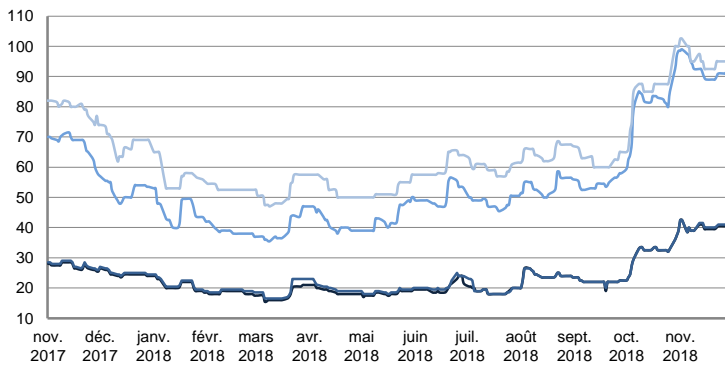
* The Riverlake european Tanker Index (ReTI) is a composite index. All main European tanker movements are represented being six crude oil tanker routes, six clean petroleum products tanker routes and five dirty petroleum tanker routes. The oil tanker stems represented are between 6'000 MT to 135'000 MT. It covers all regions in Europe including the North Sea, Baltic Sea, UKContinent, Mediterranean and Black Sea.

RIVERLAKE TANKER INDEX (RTI)

CRUDE OIL TANKERS

VLCC

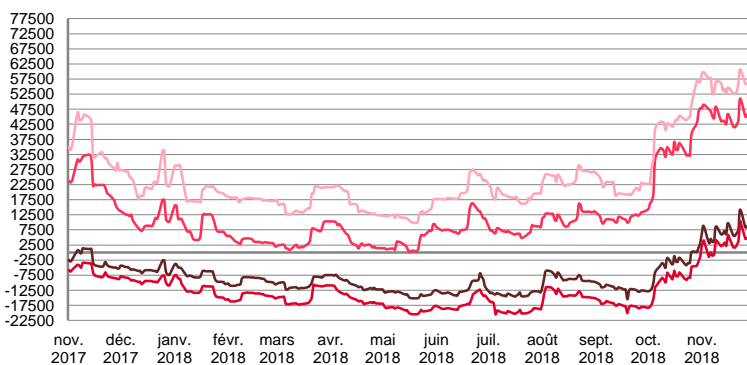
WORLDSCALE



	TODAY	THURSDAY	WEEKLY TREND	MTD AVERAGE
AG / USG 280kT	42,5	40,5	▲	40,3
AG / UKC 280kT	43,0	41,0	▲	40,6
AG / EAST 270kT	94,5	92,5	▲	92,6
WAF / USG 260kT	105,0	97,5	▲	96,3

For detailed information, visit our website :
Riverlake Online Timecharter Equivalent Calculation :
<http://www.riverlake.ch/en/utilities/rticalc.php>

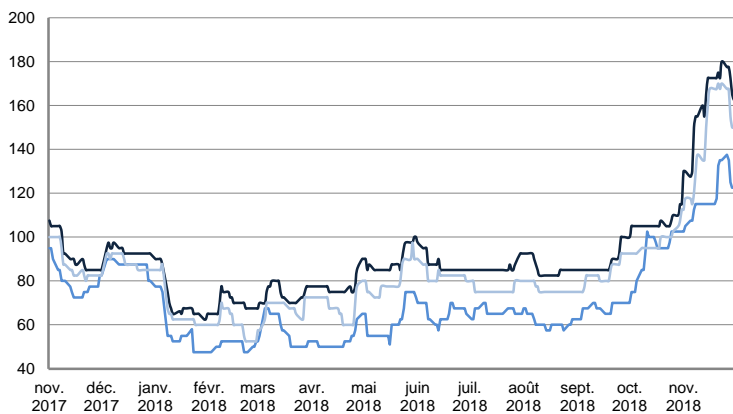
TIME CHARTER EQUIVALENT (\$/DAY)



	TODAY	THURSDAY	WEEKLY TREND	MTD AVERAGE
AG / USG 280kT	16'945,0	9'132,0	▲	7532,8
AG / UKC 280kT	13'150,0	5'253,0	▲	3436,0
AG / EAST 270kT	54'652,0	47'249,0	▲	45814,3
WAF / USG 260kT	71'228,0	58'796,0	▲	56463,5

SUEZMAX

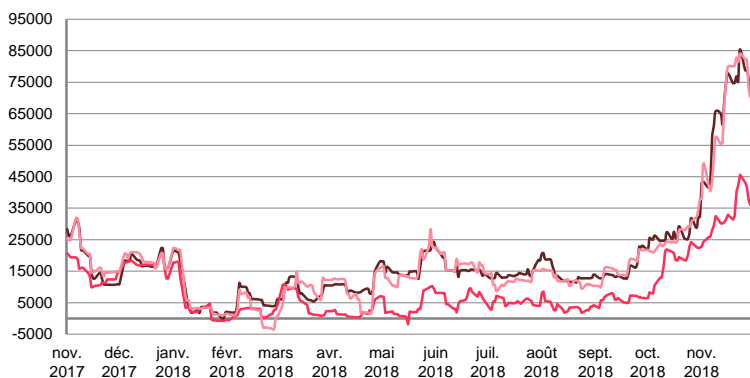
WORLDSCALE



	TODAY	THURSDAY	WEEKLY TREND	MTD AVERAGE
—BSEA / MED 135KT	162,5	165,0	▲	160,5
—WAF / USG 130KT	122,5	122,5	▲	96,3
—XMED 135KT	150,0	150,0	▲	146,8

For detailed information, visit our website :
Riverlake Online Timecharter Equivalent Calculation :
<http://www.riverlake.ch/en/utilities/rticalc.php>

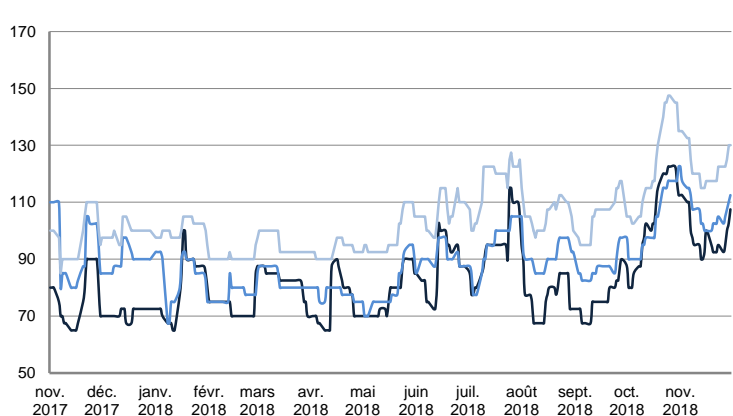
TIME CHARTER EQUIVALENT (\$/DAY)



	TODAY	THURSDAY	WEEKLY TREND	MTD AVERAGE
—BSEA / MED 135KT	73'580,0	70'782,0	▲	66785,7
—WAF / USG 130KT	39'933,0	35'976,0	▲	33400,5
—XMED 135KT	70'333,0	70'299,0	▲	65596,8

AFRAMAX

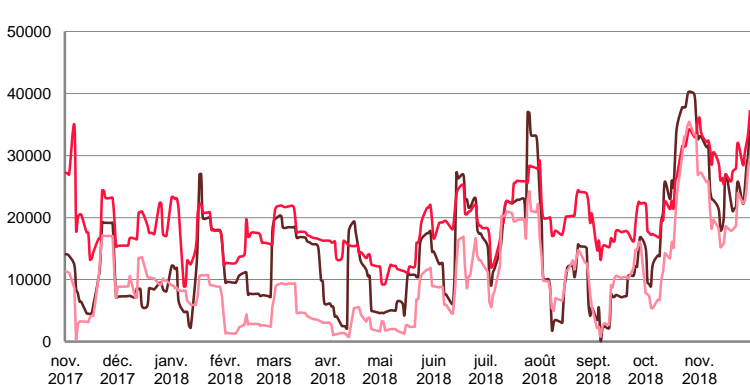
WORLDSCALE



	TODAY	THURSDAY	WEEKLY TREND	MTD AVERAGE
—BALTIC / UKC 100KT	107,5	102,5	▼	98,6
—BALTIC / STATES 100KT	112,5	110,0	▼	107,3
—NSEA / UKC 80KT	130,0	130,0	▼	123,0

For detailed information, visit our website :
Riverlake Online Timecharter Equivalent Calculation :
<http://www.riverlake.ch/en/utilities/rticalc.php>

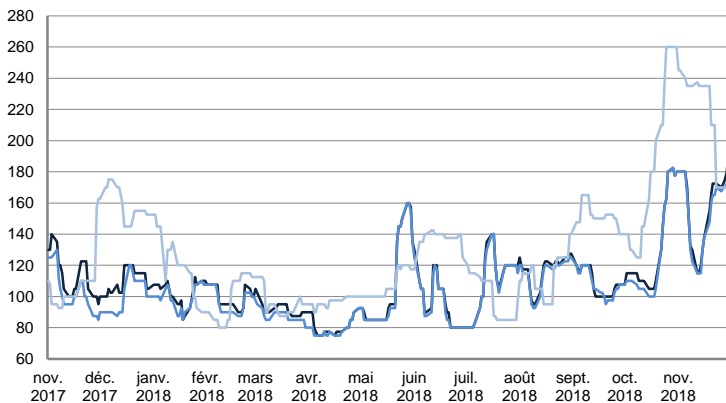
TIME CHARTER EQUIVALENT (\$/DAY)



	TODAY	THURSDAY	WEEKLY TREND	MTD AVERAGE
—BALTIC / UKC 100KT	35'891,0	30'278,0	▼	25367,4
—BALTIC / STATES 100KT	37'175,0	33'582,0	▲	30013,8
—NSEA / UKC 80KT	29'891,0	27'978,0	▼	21498,8

AFRAMAX

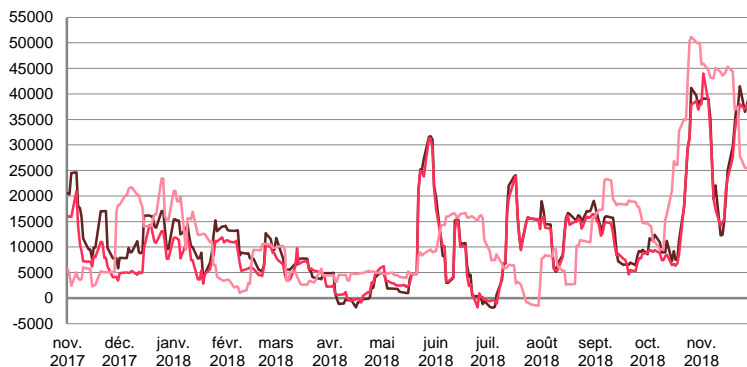
WORLDSCALE



	TODAY	THURSDAY	WEEKLY TREND	MTD AVERAGE
— BSEA / MED 80kT	192,5	180,0	▲	157,6
— XMED 80kT	182,5	172,5	▲	154,1
— CAR / USA 70kT	150,0	170,0	▲	214,2

For detailed information, visit our website :
Riverlake Online Timecharter Equivalent Calculation :
<http://www.riverlake.ch/en/utilities/rticalc.php>

TIME CHARTER EQUIVALENT (\$/DAY)

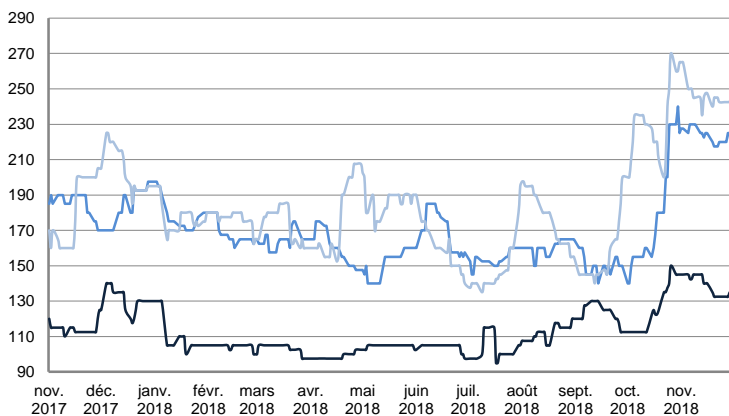


	TODAY	THURSDAY	WEEKLY TREND	MTD AVERAGE
— BSEA / MED 80kT	50'273,0	41'294,0	▲	31295,5
— XMED 80kT	43'180,0	39'382,0	▲	30422,6
— CAR / USA 70kT	22'343,0	25'703,0	▲	38218,6

PRODUCT TANKERS

DPP

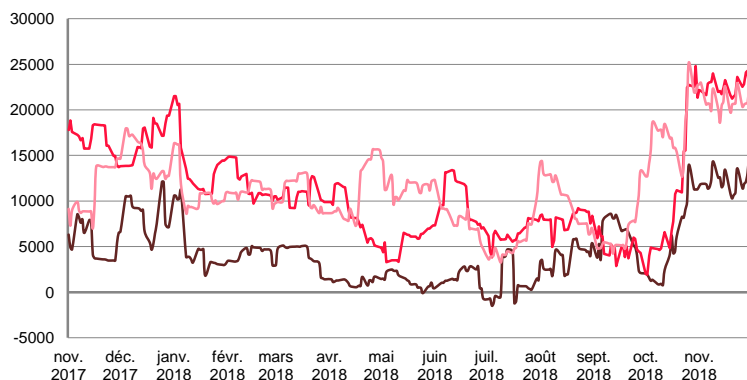
WORLDSCALE



	TODAY	THURSDAY	WEEKLY TREND	MTD AVERAGE
— BALTIC / STATES 55kT	135,0	135,0	▲	138,8
— BALTIC / UKC 30kT	210,0	225,0	▲	223,4
— BSEA / MED 30kT	240,0	242,5	▲	246,3

For detailed information, visit our website :
Riverlake Online Timecharter Equivalent Calculation :
<http://www.riverlake.ch/en/utilities/rticalc.php>

TIME CHARTER EQUIVALENT (\$/DAY)

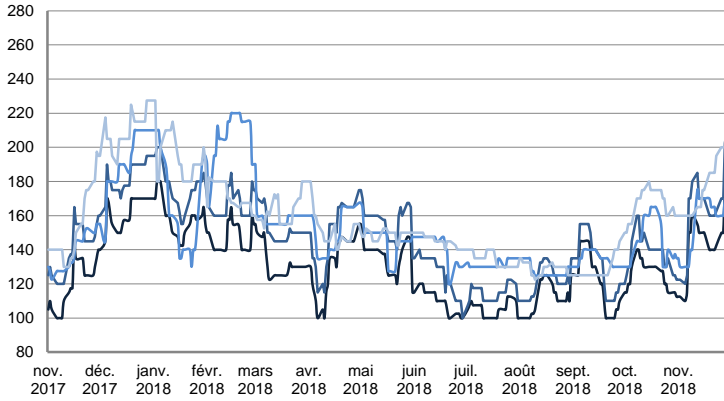


	TODAY	THURSDAY	WEEKLY TREND	MTD AVERAGE
— BALTIC / STATES 55kT	15'268,0	13'080,0	▲	12135,6
— BALTIC / UKC 30kT	22'143,0	24'273,0	▲	22534,0
— BSEA / MED 30kT	22'777,0	20'762,0	▲	21018,2

PRODUCT TANKERS

CPP

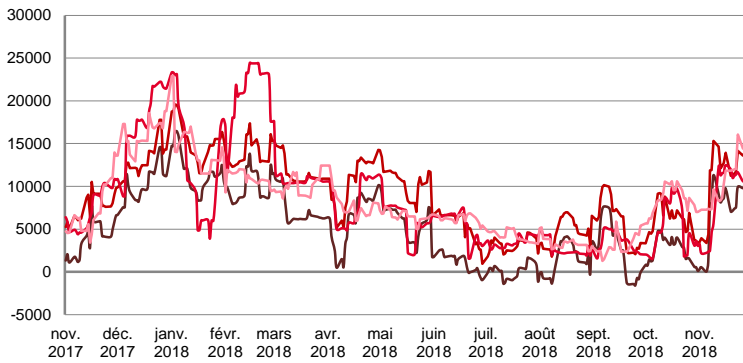
WORLDSCALE



	TODAY	THURSDAY	WEEKLY TREND	MTD AVERAGE
—UKC / STATES 37kT	187,5	180,0	▲	145,9
—UKC / WAF 33kT	205,0	210,0	▲	165,2
—BALTIC / UKC 30kT	200,0	170,0	▲	158,0
—BSEA / MED 30kT	190,0	200,0	■	176,8

For detailed information, visit our website :
Riverlake Online Timecharter Equivalent Calculation :
<http://www.riverlake.ch/en/utilities/rticalc.php>

TIME CHARTER EQUIVALENT (\$/DAY)

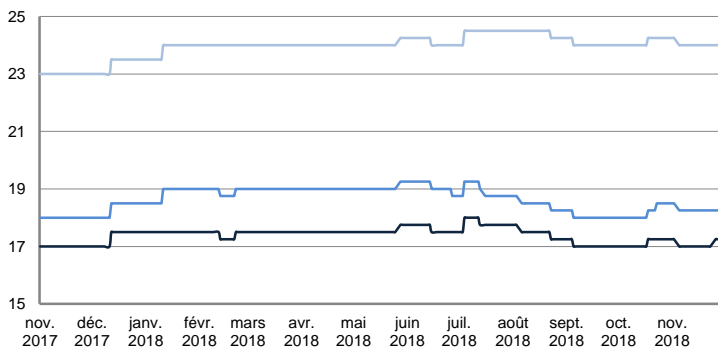


	TODAY	THURSDAY	WEEKLY TREND	MTD AVERAGE
—UKC / STATES 37kT	19'029,0	16'106,0	▲	8284,8
—UKC / WAF 33kT	21'447,0	20'762,0	▲	12231,0
—BALTIC / UKC 30kT	20'972,0	13'287,0	▲	9459,3
—BSEA / MED 30kT	15'483,0	14'790,0	▲	10843,2

SMALL TANKERS

DPP

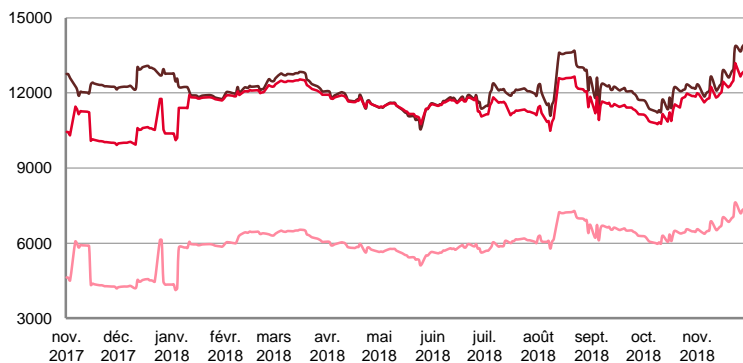
\$ / T



	TODAY	THURSDAY	WEEKLY TREND	MTD AVERAGE
—BALTIC / UKC 15kT	17,3	17,3	▼	17,1
—BALTIC / UKC 12kT	18,3	18,3	▼	18,3
—BALTIC / UKC 6kT	24,0	24,0	▼	24,0

For detailed information, visit our website :
Riverlake Online Timecharter Equivalent Calculation :
<http://www.riverlake.ch/en/utilities/rticalc.php>

TIME CHARTER EQUIVALENT (\$/DAY)

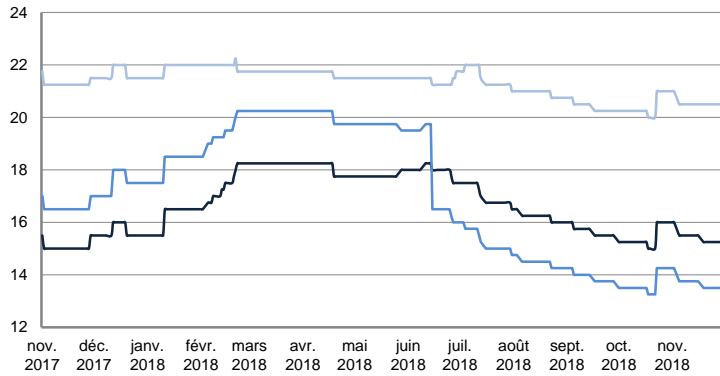


	TODAY	THURSDAY	WEEKLY TREND	MTD AVERAGE
—BALTIC / UKC 15kT	14'851,0	14'037,0	▲	12838,7
—BALTIC / UKC 10kT	13'592,0	12'953,0	▲	12300,9
—BALTIC / UKC 6kT	7'948,0	7'437,0	▲	6907,2

SMALL TANKERS

CPP

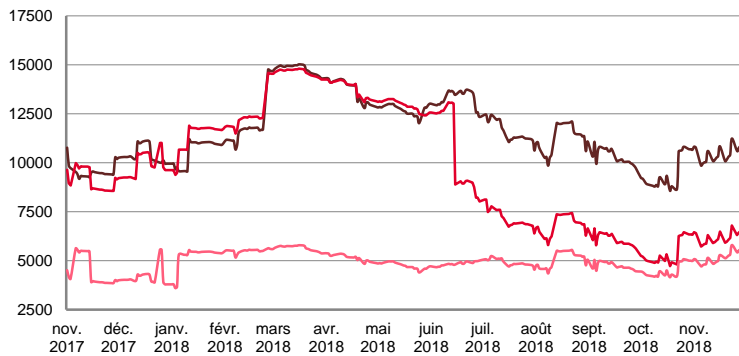
\$ / T



	TODAY	THURSDAY	WEEKLY TREND	MTD AVERAGE
BALTIC / UKC 15kT	15,3	15,3	↔	15,4
BALTIC / UKC 12kT	13,5	13,5	↔	13,7
BALTIC / UKC 6kT	20,5	20,5	↔	20,5

For detailed information, visit our website :
Riverlake Online Timecharter Equivalent Calculation :
<http://www.riverlake.ch/en/utilities/rtcalc.php>

TIME CHARTER EQUIVALENT (\$/DAY)

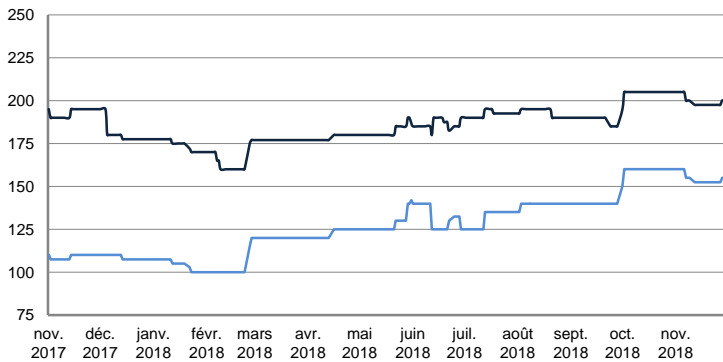


	TODAY	THURSDAY	WEEKLY TREND	MTD AVERAGE
BALTIC / UKC 15kT	11'706,0	10'949,0	▲	10488,1
BALTIC / UKC 12kT	7'167,0	6'577,0	▲	6211,2
BALTIC / UKC 6kT	6'071,0	5'629,0	▲	5188,0

SMALL TANKERS - AFRICA

CPP

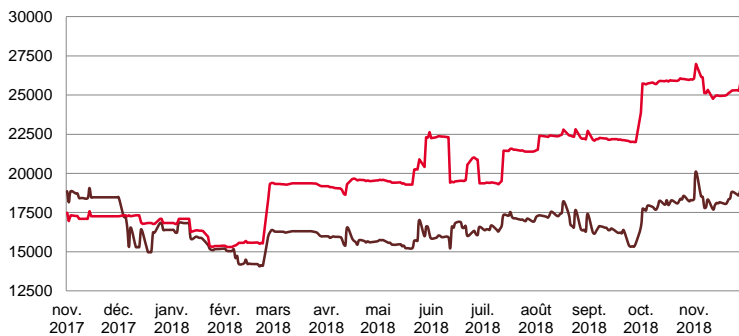
LUMPSUM (000's US\$)



	TODAY	THURSDAY	WEEKLY TREND	MTD AVERAGE
XWAF 15kT	200'000,0	200'000,0	▼	199545,5
XWAF 10kT	155'000,0	155'000,0	▼	154545,5

For detailed information, visit our website :
Riverlake Online Timecharter Equivalent Calculation :
<http://www.riverlake.ch/en/utilities/rtcalc.php>

TIME CHARTER EQUIVALENT (\$/DAY)



	TODAY	THURSDAY	WEEKLY TREND	MTD AVERAGE
XWAF 15kT	19'331,0	19'155,0	▲	18452,5
XWAF 10kT	25'927,0	25'904,0	▼	25421,5

For other RTI's, fixture reports, analysis and forecasts go to www.riverlake.ch.

Disclaimer:
This report has been prepared by Riverlake Shipping S.A. The rates contained herein are indicative only. Rate indications are as of the date of publication and are subject to change without notice. Riverlake Shipping S.A. does not assume any liability or responsibility for the correctness or completeness of the information contained herein. The above report is Copyright of Riverlake Shipping S.A. No unauthorised reproduction or redistribution without permission from Riverlake Shipping S.A.