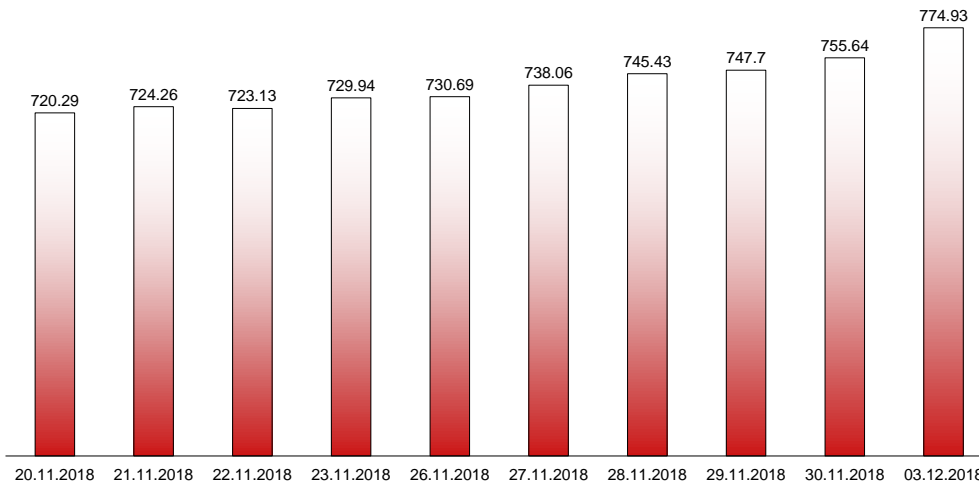


03.12.2018

RIVERLAKE european TANKER INDEX (ReTI)*



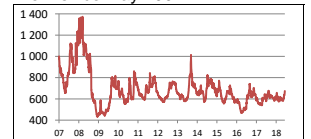
ReTI values

Max	24.07.08	1372.70
Today		774.93
Min	28.04.09	431.82

ReTI trends

daily	19.29
avg last decade	38.73
avg last 30 days	101.56

ReTI since May 2007



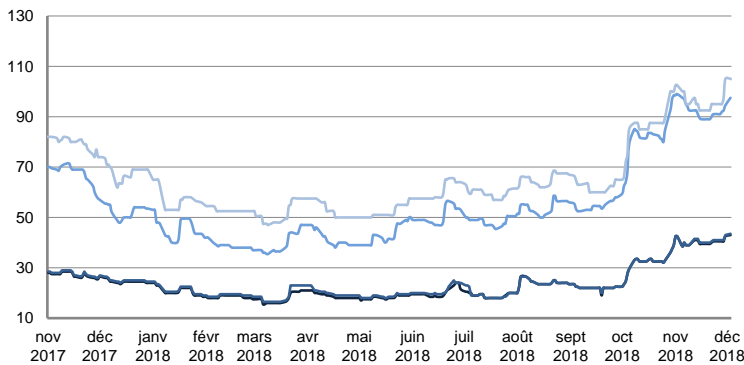
* The Riverlake european Tanker Index (ReTI) is a composite index. All main European tanker movements are represented being six crude oil tanker routes, six clean petroleum products tanker routes and five dirty petroleum tanker routes. The oil tanker stems represented are between 6'000 MT to 135'000 MT. It covers all regions in Europe including the North Sea, Baltic Sea, UKContinent, Mediterranean and Black Sea.

RIVERLAKE TANKER INDEX (RTI)

CRUDE OIL TANKERS

VLCC

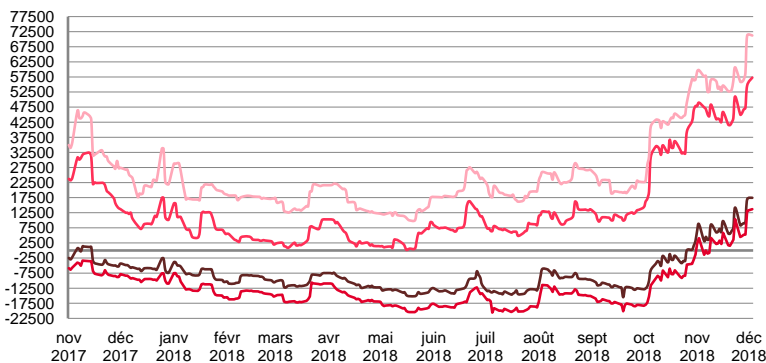
WORLDSCALE



	TODAY	FRIDAY	WEEKLY TREND	MTD AVERAGE
AG / USG 280kT	43.0	42.5	▲	43.0
AG / UKC 280kT	43.5	43.0	▲	43.5
AG / EAST 270kT	97.5	94.5	▲	97.5
WAF / USG 260kT	105.0	105.0	▲	105.0

For detailed information, visit our website :
Riverlake Online Timecharter Equivalent Calculation :
<http://www.riverlake.ch/en/utilities/rticalc.php>

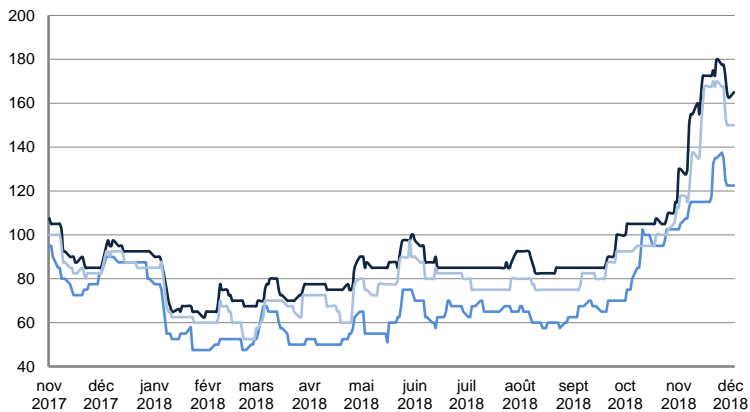
TIME CHARTER EQUIVALENT (\$/DAY)



	TODAY	FRIDAY	WEEKLY TREND	MTD AVERAGE
AG / USG 280kT	17 444.0	16 945.0	▲	17444.0
AG / UKC 280kT	13 678.0	13 150.0	▲	13678.0
AG / EAST 270kT	57 269.0	54 652.0	▲	57269.0
WAF / USG 260kT	71 228.0	71 228.0	▲	71228.0

SUEZMAX

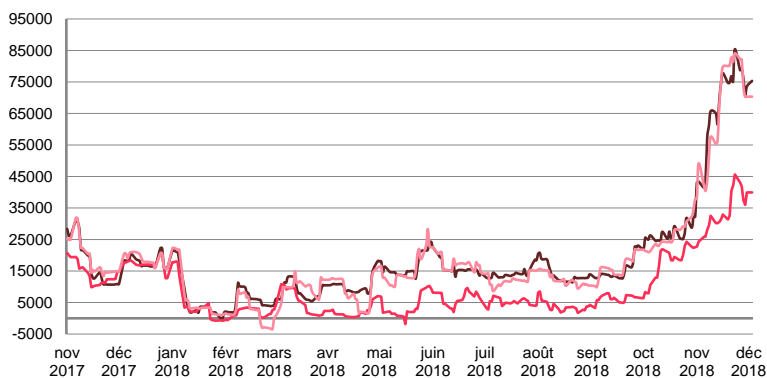
WORLDSCALE



	TODAY	FRIDAY	WEEKLY TREND	MTD AVERAGE
—BSEA / MED 135KT	165.0	162.5	▲	165.0
—WAF / USG 130KT	122.5	122.5	▲	105.0
—XMED 135KT	150.0	150.0	▲	150.0

For detailed information, visit our website :
Riverlake Online Timecharter Equivalent Calculation :
<http://www.riverlake.ch/en/utilities/rticalc.php>

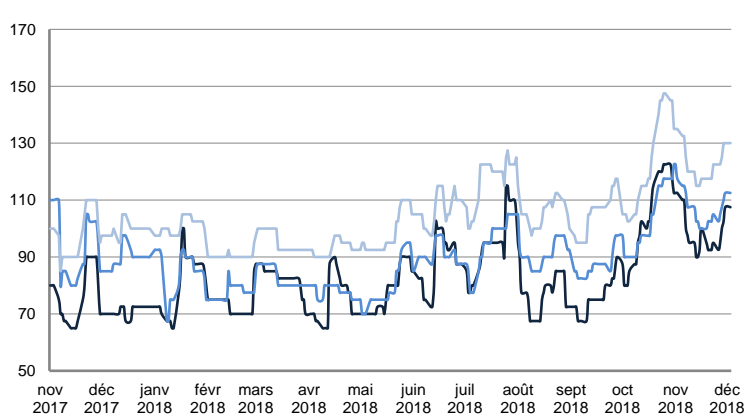
TIME CHARTER EQUIVALENT (\$/DAY)



	TODAY	FRIDAY	WEEKLY TREND	MTD AVERAGE
—BSEA / MED 135KT	75 343.0	73 580.0	▲	75343.0
—WAF / USG 130KT	39 933.0	39 933.0	▲	39933.0
—XMED 135KT	70 333.0	70 333.0	▲	70333.0

AFRAMAX

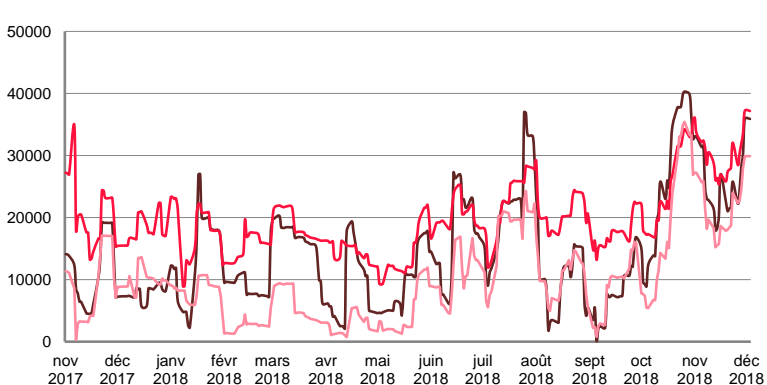
WORLDSCALE



	TODAY	FRIDAY	WEEKLY TREND	MTD AVERAGE
—BALTIC / UKC 100KT	107.5	107.5	▼	107.5
—BALTIC / STATES 100KT	112.5	112.5	▼	112.5
—NSEA / UKC 80KT	130.0	130.0	▼	130.0

For detailed information, visit our website :
Riverlake Online Timecharter Equivalent Calculation :
<http://www.riverlake.ch/en/utilities/rticalc.php>

TIME CHARTER EQUIVALENT (\$/DAY)

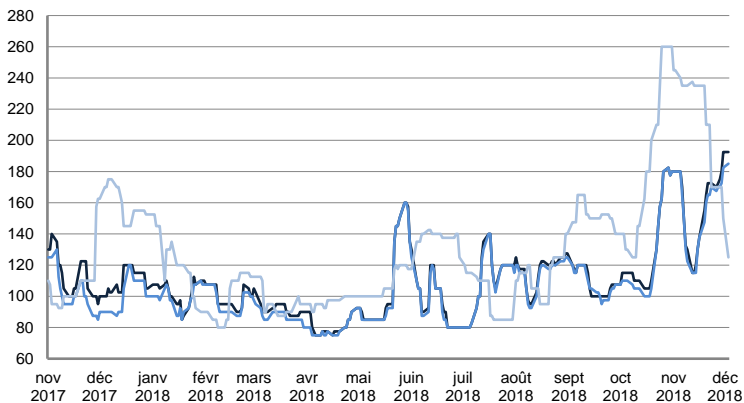


	TODAY	FRIDAY	WEEKLY TREND	MTD AVERAGE
—BALTIC / UKC 100KT	35 891.0	35 891.0	▼	35891.0
—BALTIC / STATES 100KT	37 175.0	37 175.0	▲	37175.0
—NSEA / UKC 80KT	29 891.0	29 891.0	▼	29891.0

CRUDE OIL TANKERS

AFRAMAX

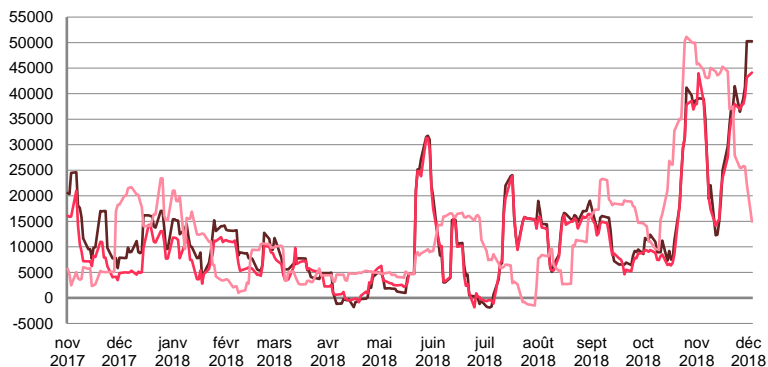
WORLDSCALE



	TODAY	FRIDAY	WEEKLY TREND	MTD AVERAGE
—BSEA / MED 80kT	192.5	192.5	▲	192.5
—XMED 80kT	185.0	182.5	▲	185.0
—CAR / USA 70kT	125.0	150.0	▲	125.0

For detailed information, visit our website :
Riverlake Online Timecharter Equivalent Calculation :
<http://www.riverlake.ch/en/utilities/rticalc.php>

TIME CHARTER EQUIVALENT (\$/DAY)

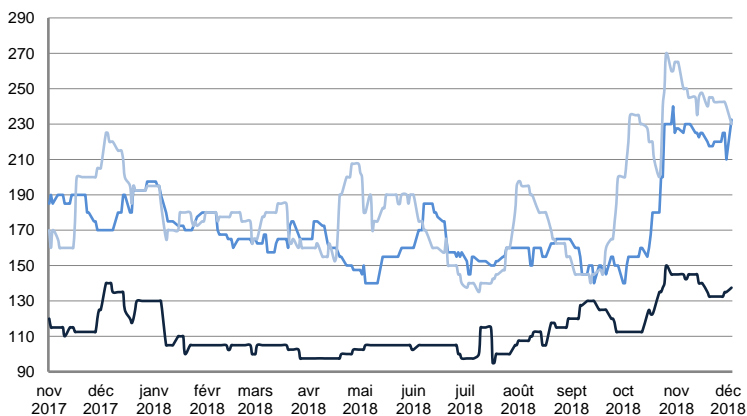


	TODAY	FRIDAY	WEEKLY TREND	MTD AVERAGE
—BSEA / MED 80kT	50 273.0	50 273.0	▲	50273.0
—XMED 80kT	44 130.0	43 180.0	▲	44130.0
—CAR / USA 70kT	14 952.0	22 343.0	▲	14952.0

PRODUCT TANKERS

DPP

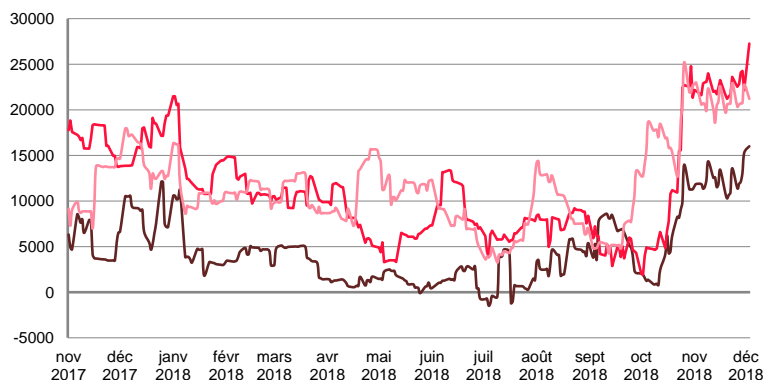
WORLDSCALE



	TODAY	FRIDAY	WEEKLY TREND	MTD AVERAGE
—BALTIC / STATES 55kT	137.5	135.0	▲	137.5
—BALTIC / UKC 30kT	232.5	210.0	▲	232.5
—BSEA / MED 30kT	230.0	240.0	▲	230.0

For detailed information, visit our website :
Riverlake Online Timecharter Equivalent Calculation :
<http://www.riverlake.ch/en/utilities/rticalc.php>

TIME CHARTER EQUIVALENT (\$/DAY)

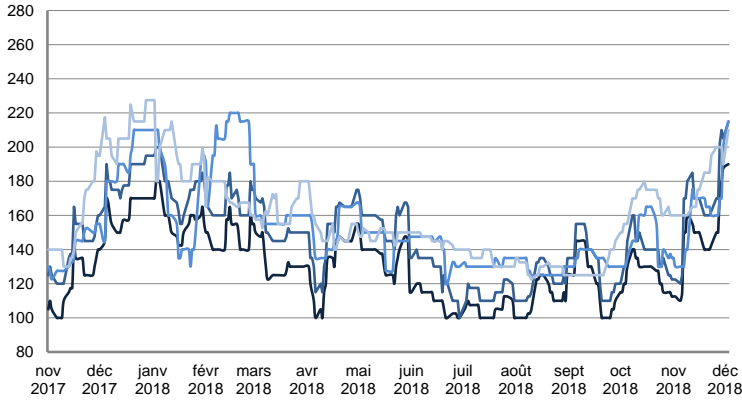


	TODAY	FRIDAY	WEEKLY TREND	MTD AVERAGE
—BALTIC / STATES 55kT	16 001.0	15 268.0	▲	16001.0
—BALTIC / UKC 30kT	27 266.0	22 143.0	▲	27266.0
—BSEA / MED 30kT	21 209.0	22 777.0	▲	21209.0

PRODUCT TANKERS

CPP

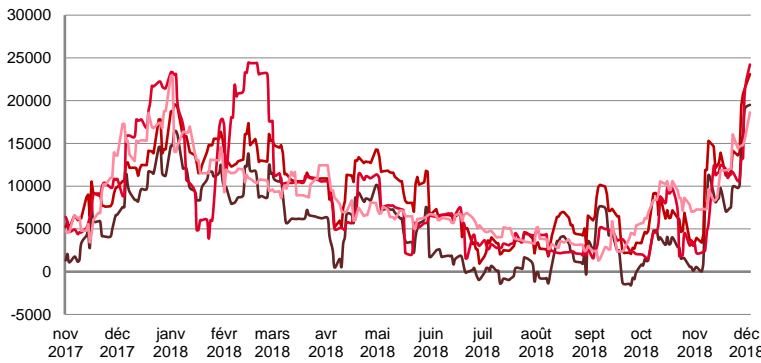
WORLDSCALE



	TODAY	FRIDAY	WEEKLY TREND	MTD AVERAGE
—UKC / STATES 37kT	190.0	187.5	▲	190.0
—UKC / WAF 33kT	215.0	205.0	▲	215.0
—BALTIC / UKC 30kT	215.0	200.0	▲	215.0
—BSEA / MED 30kT	210.0	190.0	▲	210.0

For detailed information, visit our website :
Riverlake Online Timecharter Equivalent Calculation :
<http://www.riverlake.ch/en/utilities/rticalc.php>

TIME CHARTER EQUIVALENT (\$/DAY)

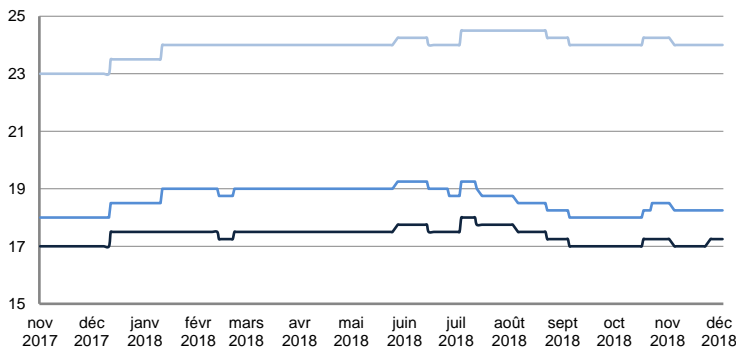


	TODAY	FRIDAY	WEEKLY TREND	MTD AVERAGE
—UKC / STATES 37kT	19 504.0	19 029.0	▲	19504.0
—UKC / WAF 33kT	23 093.0	21 447.0	▲	23093.0
—BALTIC / UKC 30kT	24 218.0	20 972.0	▲	24218.0
—BSEA / MED 30kT	18 617.0	15 483.0	▲	18617.0

SMALL TANKERS

DPP

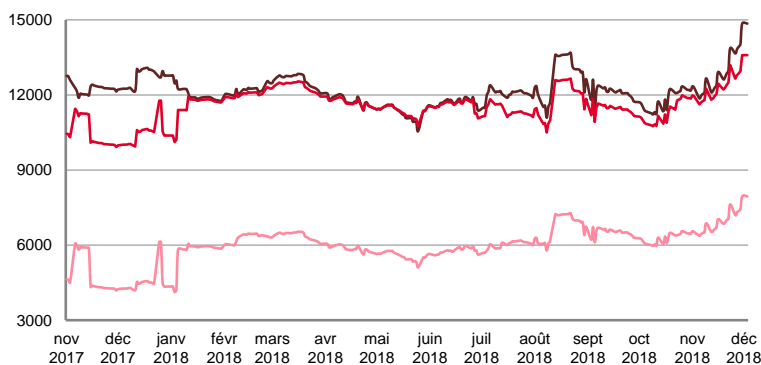
\$/T



	TODAY	FRIDAY	WEEKLY TREND	MTD AVERAGE
—BALTIC / UKC 15kT	17.3	17.3	▼	17.3
—BALTIC / UKC 12kT	18.3	18.3	▼	18.3
—BALTIC / UKC 6kT	24.0	24.0	▼	24.0

For detailed information, visit our website :
Riverlake Online Timecharter Equivalent Calculation :
<http://www.riverlake.ch/en/utilities/rticalc.php>

TIME CHARTER EQUIVALENT (\$/DAY)

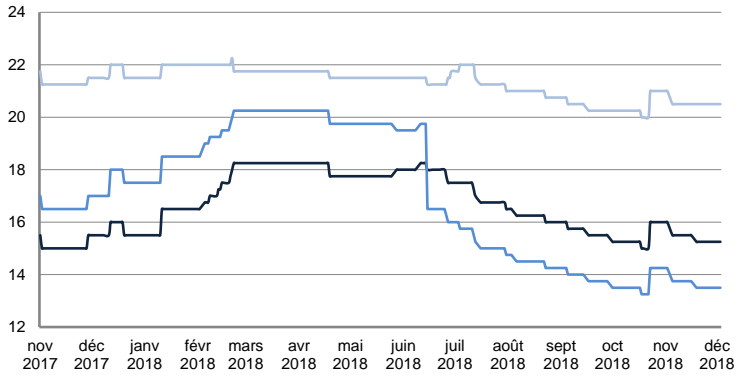


	TODAY	FRIDAY	WEEKLY TREND	MTD AVERAGE
—BALTIC / UKC 15kT	14 851.0	14 851.0	▲	14851.0
—BALTIC / UKC 10kT	13 592.0	13 592.0	▲	13592.0
—BALTIC / UKC 6kT	7 948.0	7 948.0	▲	7948.0

SMALL TANKERS

CPP

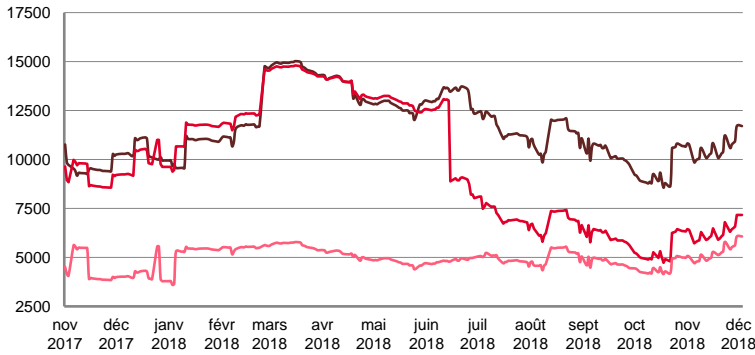
\$ / T



	TODAY	FRIDAY	WEEKLY TREND	MTD AVERAGE
BALTIC / UKC 15kT	15.3	15.3	▲	15.3
BALTIC / UKC 12kT	13.5	13.5	▲	13.5
BALTIC / UKC 6kT	20.5	20.5	▲	20.5

For detailed information, visit our website :
Riverlake Online Timecharter Equivalent Calculation :
<http://www.riverlake.ch/en/utilities/rtcalc.php>

TIME CHARTER EQUIVALENT (\$/DAY)

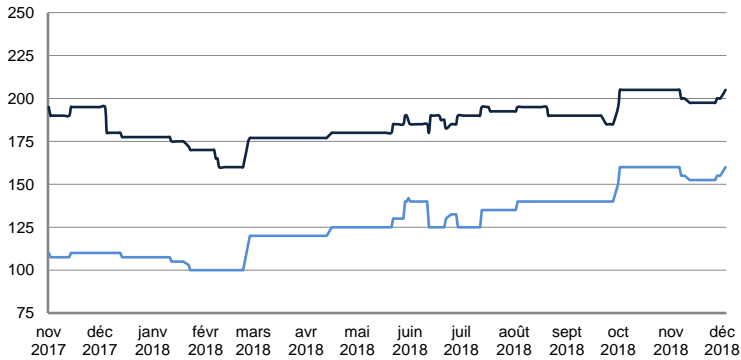


	TODAY	FRIDAY	WEEKLY TREND	MTD AVERAGE
BALTIC / UKC 15kT	11 706.0	11 706.0	▲	11706.0
BALTIC / UKC 12kT	7 167.0	7 167.0	▲	7167.0
BALTIC / UKC 6kT	6 071.0	6 071.0	▲	6071.0

SMALL TANKERS - AFRICA

CPP

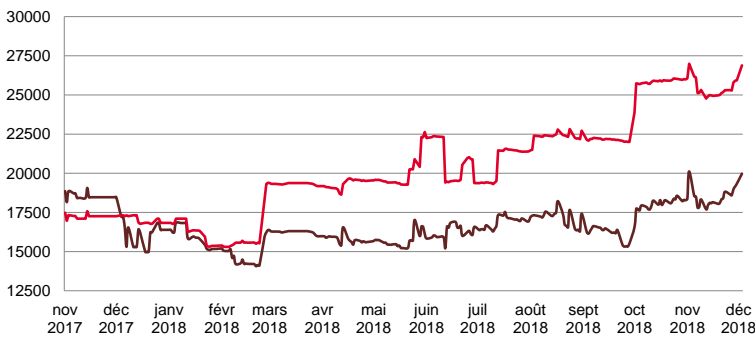
LUMPSUM (000's US\$)



	TODAY	FRIDAY	WEEKLY TREND	MTD AVERAGE
XWAF 15kT	205 000.0	200 000.0	▼	205000.0
XWAF 10kT	160 000.0	155 000.0	▼	160000.0

For detailed information, visit our website :
Riverlake Online Timecharter Equivalent Calculation :
<http://www.riverlake.ch/en/utilities/rtcalc.php>

TIME CHARTER EQUIVALENT (\$/DAY)



	TODAY	FRIDAY	WEEKLY TREND	MTD AVERAGE
XWAF 15kT	19 972.0	19 331.0	▲	19972.0
XWAF 10kT	26 887.0	25 927.0	▼	26887.0

For other RTI's, fixture reports, analysis and forecasts go to www.riverlake.ch.

Disclaimer:
This report has been prepared by Riverlake Shipping S.A. The rates contained herein are indicative only. Rate indications are as of the date of publication and are subject to change without notice. Riverlake Shipping S.A. does not assume any liability or responsibility for the correctness or completeness of the information contained herein. The above report is Copyright of Riverlake Shipping S.A. No unauthorised reproduction or redistribution without permission from Riverlake Shipping S.A.