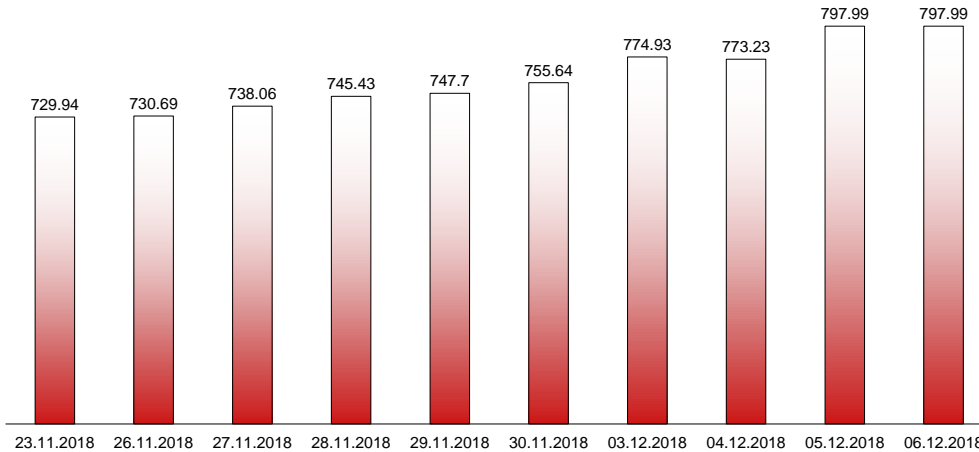


06.12.2018

**RIVERLAKE european TANKER INDEX (ReTI)\***



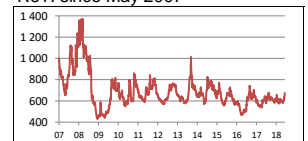
ReTI values

Max	24.07.08	<b>1372.70</b>
Today		<b>797.99</b>
Min	28.04.09	<b>431.82</b>

ReTI trends

daily	<b>0.00</b>
avg last decade	<b>50.78</b>
avg last 30 days	<b>102.54</b>

ReTI since May 2007



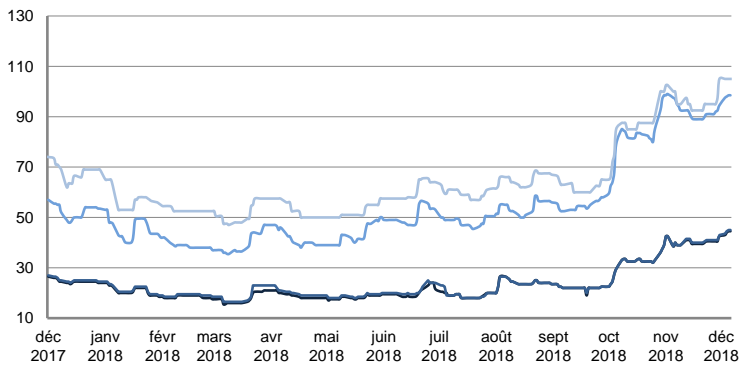
\* The Riverlake european Tanker Index (ReTI) is a composite index. All main European tanker movements are represented being six crude oil tanker routes, six clean petroleum products tanker routes and five dirty petroleum tanker routes. The oil tanker stems represented are between 6'000 MT to 135'000 MT. It covers all regions in Europe including the North Sea, Baltic Sea, UKContinent, Mediterranean and Black Sea.

**RIVERLAKE TANKER INDEX (RTI)**

**CRUDE OIL TANKERS**

**VLCC**

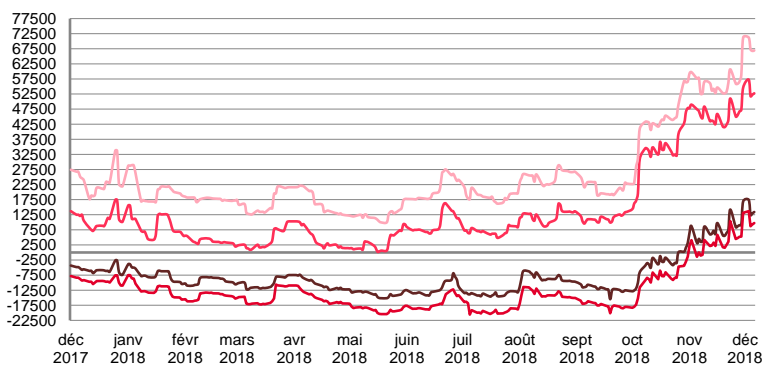
**WORLDSCALE**



	TODAY	WEDNESDAY	WEEKLY TREND	MTD AVERAGE
AG / USG 280kT	44.5	44.5	▲	44.0
AG / UKC 280kT	45.0	45.0	▲	44.5
AG / EAST 270kT	98.5	98.5	▲	98.1
WAF / USG 260kT	105.0	105.0	▲	105.0

For detailed information, visit our website :  
Riverlake Online Timecharter Equivalent Calculation :  
<http://www.riverlake.ch/en/utilities/rticalc.php>

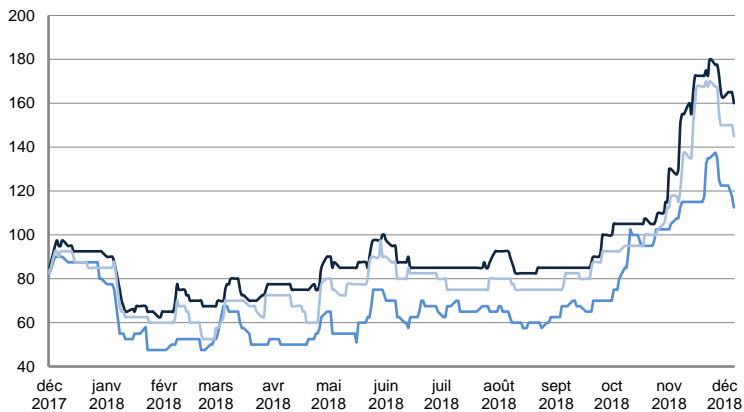
**TIME CHARTER EQUIVALENT (\$/DAY)**



	TODAY	WEDNESDAY	WEEKLY TREND	MTD AVERAGE
AG / USG 280kT	13 406.0	12 952.0	▲	14049.0
AG / UKC 280kT	9 752.0	9 297.0	▲	10358.8
AG / EAST 270kT	52 743.0	52 287.0	▲	53521.0
WAF / USG 260kT	66 927.0	66 780.0	▲	68055.8

**SUEZMAX**

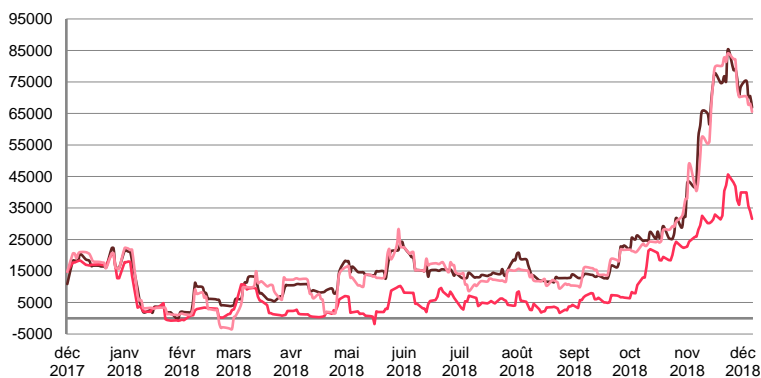
**WORLDSCALE**



	TODAY	WEDNESDAY	WEEKLY TREND	MTD AVERAGE
—BSEA / MED 135KT	160.0	165.0	▼	163.8
—WAF / USG 130KT	112.5	117.5	▼	105.0
—XMED 135KT	145.0	150.0	▼	148.8

For detailed information, visit our website :  
Riverlake Online Timecharter Equivalent Calculation :  
<http://www.riverlake.ch/en/utilities/rticalc.php>

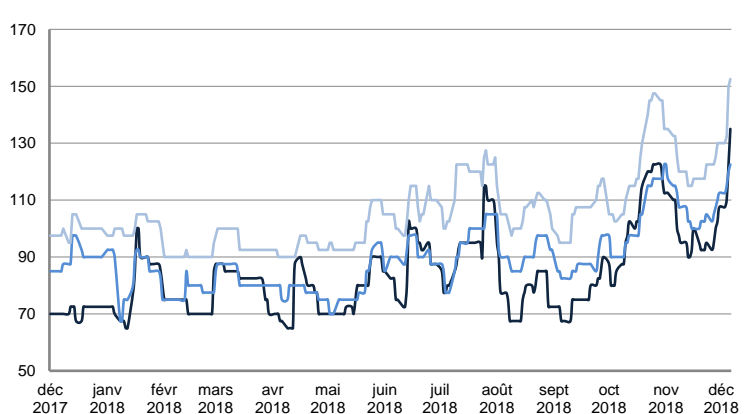
**TIME CHARTER EQUIVALENT (\$/DAY)**



	TODAY	WEDNESDAY	WEEKLY TREND	MTD AVERAGE
—BSEA / MED 135KT	66 904.0	70 504.0	▼	70747.8
—WAF / USG 130KT	31 551.0	33 958.0	▼	35264.0
—XMED 135KT	65 551.0	68 079.0	▼	67937.3

**AFRAMAX**

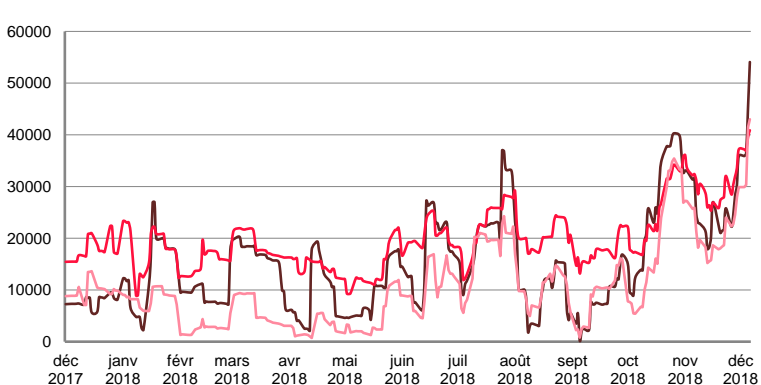
**WORLDSCALE**



	TODAY	WEDNESDAY	WEEKLY TREND	MTD AVERAGE
—BALTIC / UKC 100KT	135.0	122.5	▲	118.8
—BALTIC / STATES 100KT	122.5	120.0	▲	117.5
—NSEA / UKC 80KT	152.5	150.0	▲	141.3

For detailed information, visit our website :  
Riverlake Online Timecharter Equivalent Calculation :  
<http://www.riverlake.ch/en/utilities/rticalc.php>

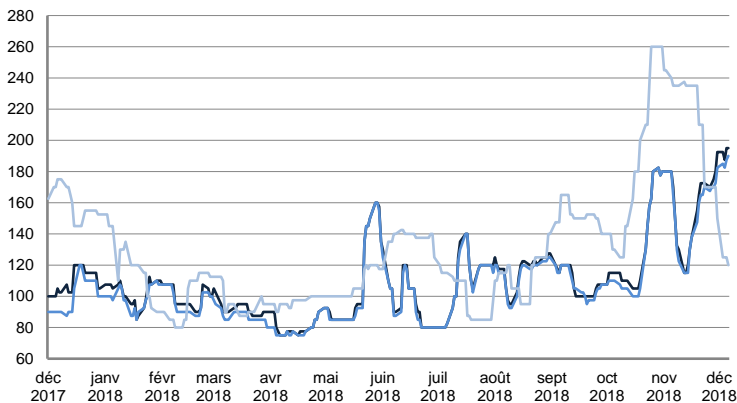
**TIME CHARTER EQUIVALENT (\$/DAY)**



	TODAY	WEDNESDAY	WEEKLY TREND	MTD AVERAGE
—BALTIC / UKC 100KT	54 074.0	45 297.0	▲	42923.8
—BALTIC / STATES 100KT	40 870.0	39 569.0	▲	38649.5
—NSEA / UKC 80KT	43 009.0	41 486.0	▲	36176.5

**AFRAMAX**

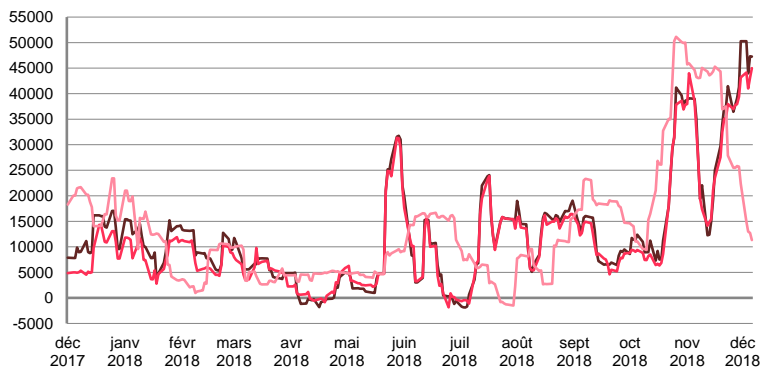
**WORLDSCALE**



	TODAY	WEDNESDAY	WEEKLY TREND	MTD AVERAGE
—BSEA / MED 80kT	195.0	195.0	▲	192.5
—XMED 80kT	190.0	187.5	▲	186.3
—CAR / USA 70kT	120.0	125.0	▼	123.8

For detailed information, visit our website :  
Riverlake Online Timecharter Equivalent Calculation :  
<http://www.riverlake.ch/en/utilities/rticalc.php>

**TIME CHARTER EQUIVALENT (\$/DAY)**

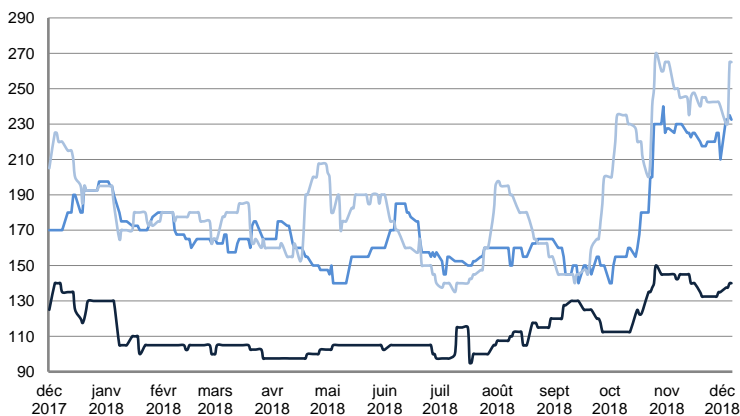


	TODAY	WEDNESDAY	WEEKLY TREND	MTD AVERAGE
—BSEA / MED 80kT	47 273.0	47 334.0	▲	47215.3
—XMED 80kT	44 992.0	43 152.0	▲	43323.5
—CAR / USA 70kT	11 327.0	12 733.0	▼	13000.0

PRODUCT TANKERS

**DPP**

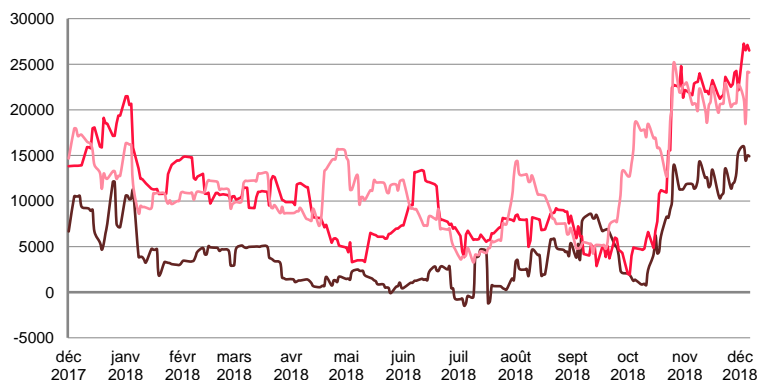
**WORLDSCALE**



	TODAY	WEDNESDAY	WEEKLY TREND	MTD AVERAGE
—BALTIC / STATES 55kT	140.0	140.0	▲	138.8
—BALTIC / UKC 30kT	232.5	235.0	▼	233.1
—BSEA / MED 30kT	265.0	265.0	■	247.5

For detailed information, visit our website :  
Riverlake Online Timecharter Equivalent Calculation :  
<http://www.riverlake.ch/en/utilities/rticalc.php>

**TIME CHARTER EQUIVALENT (\$/DAY)**

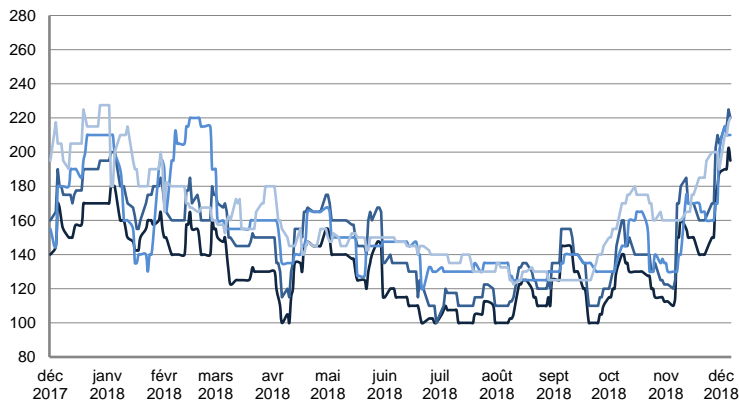


	TODAY	WEDNESDAY	WEEKLY TREND	MTD AVERAGE
—BALTIC / STATES 55kT	14 905.0	14 991.0	▲	15084.8
—BALTIC / UKC 30kT	26 505.0	27 124.0	▲	26856.3
—BSEA / MED 30kT	24 096.0	24 138.0	▲	21987.0

PRODUCT TANKERS

CPP

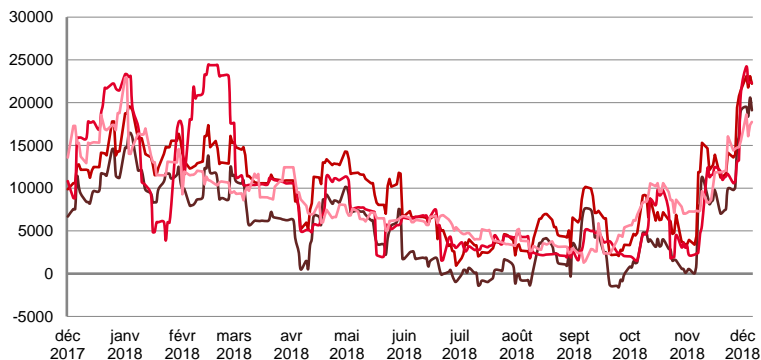
WORLDSCALE



	TODAY	WEDNESDAY	WEEKLY TREND	MTD AVERAGE
UKC / STATES 37kT	195.0	202.5	▲	194.4
UKC / WAF 33kT	220.0	225.0	▲	218.8
BALTIC / UKC 30kT	210.0	210.0	▲	211.3
BSEA / MED 30kT	220.0	217.5	▲	214.4

For detailed information, visit our website :  
Riverlake Online Timecharter Equivalent Calculation :  
<http://www.riverlake.ch/en/utilities/rticalc.php>

TIME CHARTER EQUIVALENT (\$/DAY)

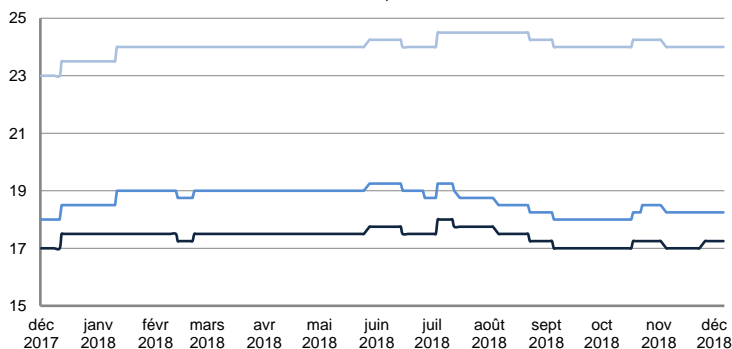


	TODAY	WEDNESDAY	WEEKLY TREND	MTD AVERAGE
UKC / STATES 37kT	19 108.0	20 590.0	▲	19396.0
UKC / WAF 33kT	22 210.0	23 093.0	▲	22539.5
BALTIC / UKC 30kT	22 330.0	22 376.0	▲	22830.0
BSEA / MED 30kT	17 745.0	17 392.0	▲	17458.0

SMALL TANKERS

DPP

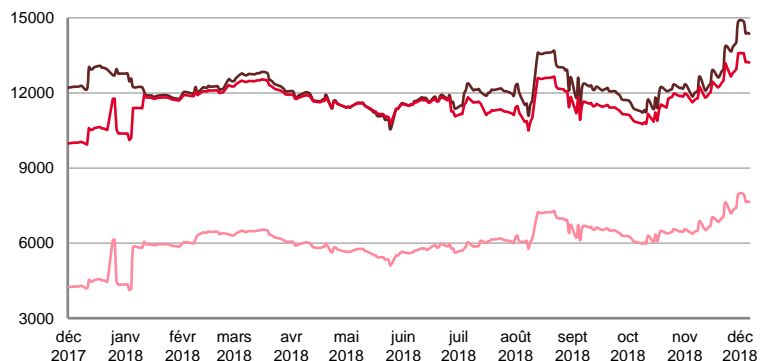
\$ / T



	TODAY	WEDNESDAY	WEEKLY TREND	MTD AVERAGE
BALTIC / UKC 15kT	17.3	17.3	■	17.3
BALTIC / UKC 12kT	18.3	18.3	■	18.3
BALTIC / UKC 6kT	24.0	24.0	■	24.0

For detailed information, visit our website :  
Riverlake Online Timecharter Equivalent Calculation :  
<http://www.riverlake.ch/en/utilities/rticalc.php>

TIME CHARTER EQUIVALENT (\$/DAY)

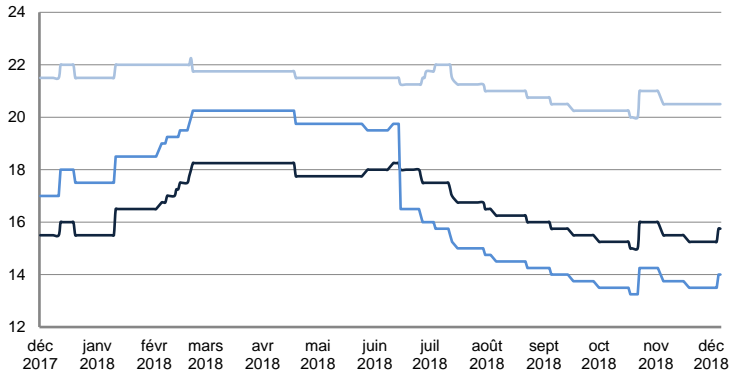


	TODAY	WEDNESDAY	WEEKLY TREND	MTD AVERAGE
BALTIC / UKC 15kT	14 369.0	14 401.0	▲	14501.5
BALTIC / UKC 10kT	13 213.0	13 238.0	▲	13317.3
BALTIC / UKC 6kT	7 645.0	7 665.0	▲	7728.3

SMALL TANKERS

CPP

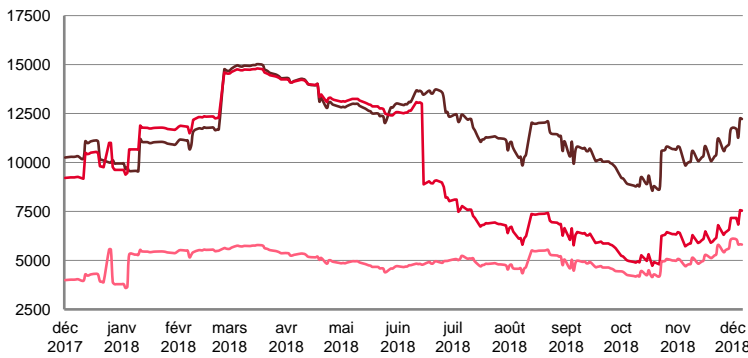
\$ / T



	TODAY	WEDNESDAY	WEEKLY TREND	MTD AVERAGE
BALTIC / UKC 15kT	15.8	15.8	▬	15.5
BALTIC / UKC 12kT	14.0	14.0	▬	13.8
BALTIC / UKC 6kT	20.5	20.5	▬	20.5

For detailed information, visit our website :  
Riverlake Online Timecharter Equivalent Calculation :  
<http://www.riverlake.ch/en/utilities/rticalc.php>

TIME CHARTER EQUIVALENT (\$/DAY)

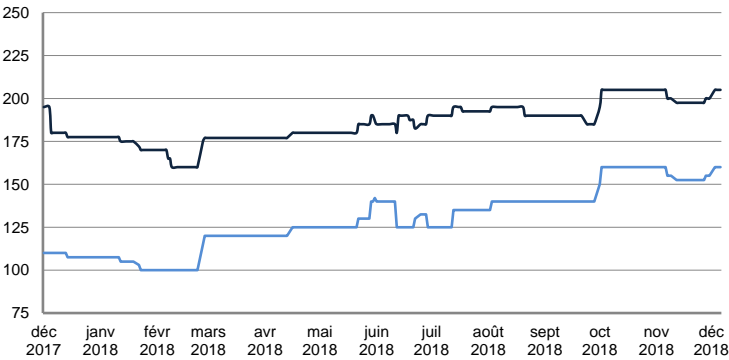


	TODAY	WEDNESDAY	WEEKLY TREND	MTD AVERAGE
BALTIC / UKC 15kT	12 219.0	12 248.0	▲	11861.3
BALTIC / UKC 12kT	7 547.0	7 569.0	▲	7278.0
BALTIC / UKC 6kT	5 809.0	5 826.0	▲	5881.0

SMALL TANKERS - AFRICA

CPP

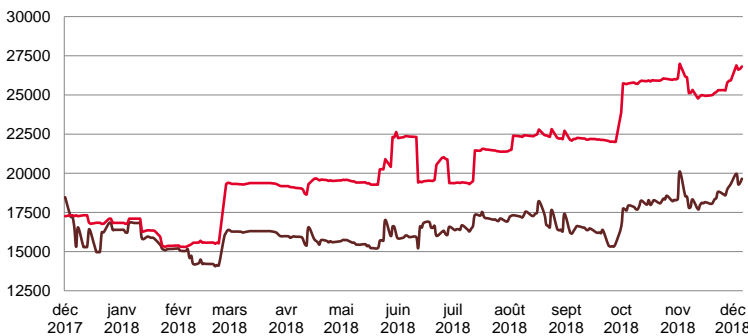
LUMPSUM (000's US\$)



	TODAY	WEDNESDAY	WEEKLY TREND	MTD AVERAGE
XWAF 15kT	205 000.0	205 000.0	▲	205000.0
XWAF 10kT	160 000.0	160 000.0	▲	160000.0

For detailed information, visit our website :  
Riverlake Online Timecharter Equivalent Calculation :  
<http://www.riverlake.ch/en/utilities/rticalc.php>

TIME CHARTER EQUIVALENT (\$/DAY)



	TODAY	WEDNESDAY	WEEKLY TREND	MTD AVERAGE
XWAF 15kT	19 653.0	19 382.0	▲	19575.8
XWAF 10kT	26 811.0	26 662.0	▲	26742.3

For other RTI's, fixture reports, analysis and forecasts go to [www.riverlake.ch](http://www.riverlake.ch).

Disclaimer:  
This report has been prepared by Riverlake Shipping S.A. The rates contained herein are indicative only. Rate indications are as of the date of publication and are subject to change without notice. Riverlake Shipping S.A. does not assume any liability or responsibility for the correctness or completeness of the information contained herein. The above report is Copyright of Riverlake Shipping S.A. No unauthorised reproduction or redistribution without permission from Riverlake Shipping S.A.