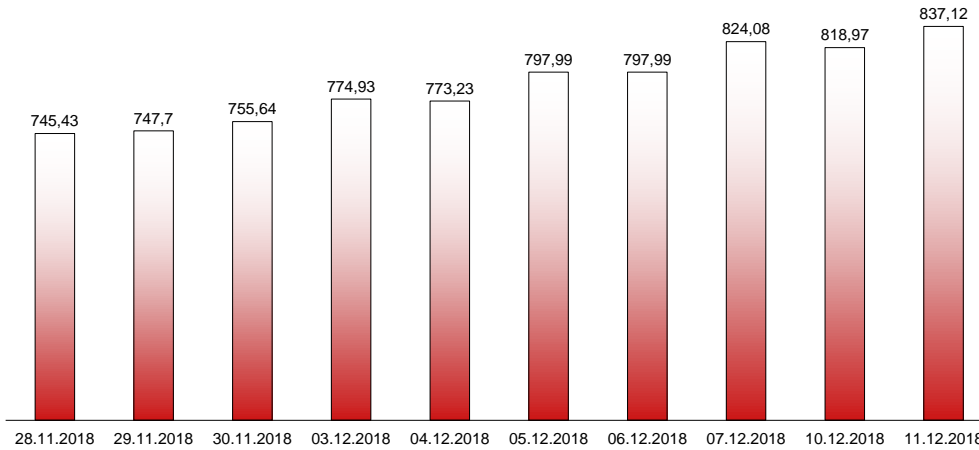


11.12.2018

**RIVERLAKE european TANKER INDEX (ReTI)\***



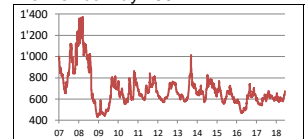
ReTI values

Max	24.07.08	1372,70
Today		837,12
Min	28.04.09	431,82

ReTI trends

daily	18,15
avg last decade	66,86
avg last 30 days	101,35

ReTI since May 2007



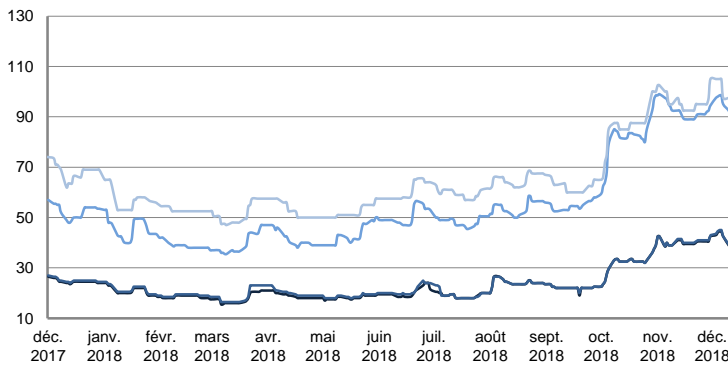
\* The Riverlake european Tanker Index (ReTI) is a composite index. All main European tanker movements are represented being six crude oil tanker routes, six clean petroleum products tanker routes and five dirty petroleum tanker routes. The oil tanker stems represented are between 6'000 MT to 135'000 MT. It covers all regions in Europe including the North Sea, Baltic Sea, UKContinent, Mediterranean and Black Sea.

**RIVERLAKE TANKER INDEX (RTI)**

**CRUDE OIL TANKERS**

VLCC

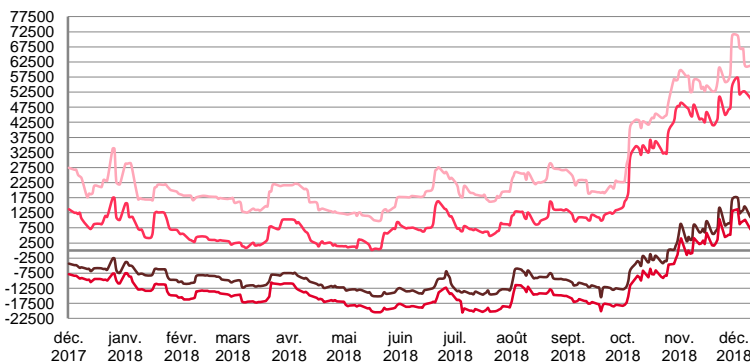
**WORLDSCALE**



	TODAY	MONDAY	WEEKLY TREND	MTD AVERAGE
AG / USG 280kT	38,0	39,0	▲	42,2
AG / UKC 280kT	38,5	39,5	▲	42,6
AG / EAST 270kT	90,5	92,5	▲	95,8
WAF / USG 260kT	97,5	97,5	▲	101,8

For detailed information, visit our website :  
Riverlake Online Timecharter Equivalent Calculation :  
<http://www.riverlake.ch/en/utilities/rticalc.php>

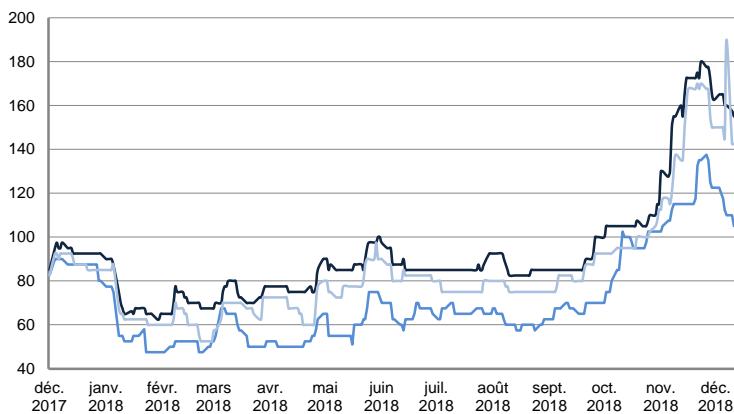
**TIME CHARTER EQUIVALENT (\$/DAY)**



	TODAY	MONDAY	WEEKLY TREND	MTD AVERAGE
AG / USG 280kT	10'640,0	11'048,0	▲	13203,6
AG / UKC 280kT	6'578,0	7'039,0	▲	9322,4
AG / EAST 270kT	49'321,0	50'462,0	▲	52358,4
WAF / USG 260kT	61'823,0	61'288,0	▲	65231,7

**SUEZMAX**

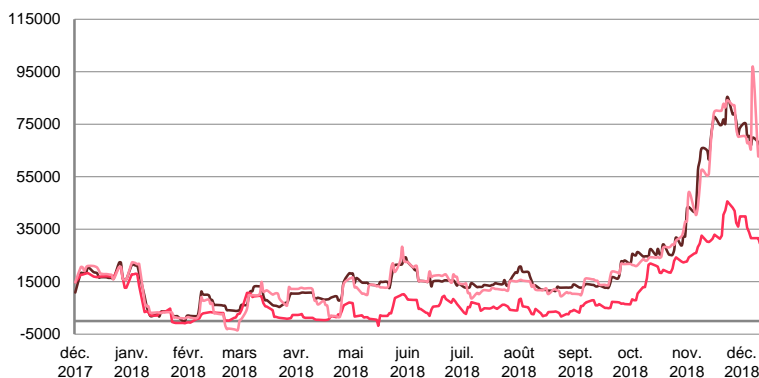
**WORLDSCALE**



	TODAY	MONDAY	WEEKLY TREND	MTD AVERAGE
—BSEA / MED 135KT	155,0	157,5	▼	161,1
—WAF / USG 130KT	105,0	110,0	▼	101,8
—XMED 135KT	142,5	142,5	▼	152,9

For detailed information, visit our website :  
Riverlake Online Timecharter Equivalent Calculation :  
<http://www.riverlake.ch/en/utilities/rticalc.php>

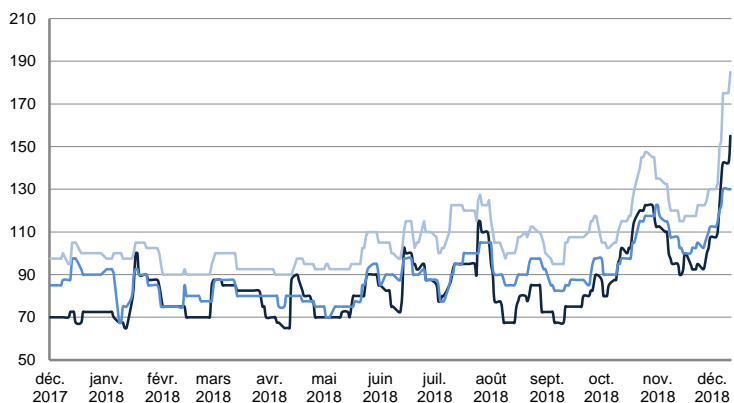
**TIME CHARTER EQUIVALENT (\$/DAY)**



	TODAY	MONDAY	WEEKLY TREND	MTD AVERAGE
—BSEA / MED 135KT	66'728,0	68'129,0	▼	69677,3
—WAF / USG 130KT	29'538,0	31'631,0	▼	33408,0
—XMED 135KT	63'177,0	62'794,0	▼	70674,9

**AFRAMAX**

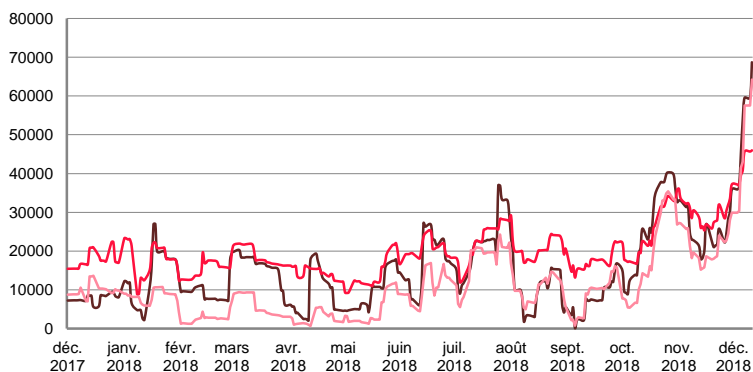
**WORLDSCALE**



	TODAY	MONDAY	WEEKLY TREND	MTD AVERAGE
—BALTIC / UKC 100KT	155,0	142,5	▲	130,7
—BALTIC / STATES 100KT	130,0	130,0	▲	122,9
—NSEA / UKC 80KT	185,0	175,0	▲	157,1

For detailed information, visit our website :  
Riverlake Online Timecharter Equivalent Calculation :  
<http://www.riverlake.ch/en/utilities/rticalc.php>

**TIME CHARTER EQUIVALENT (\$/DAY)**

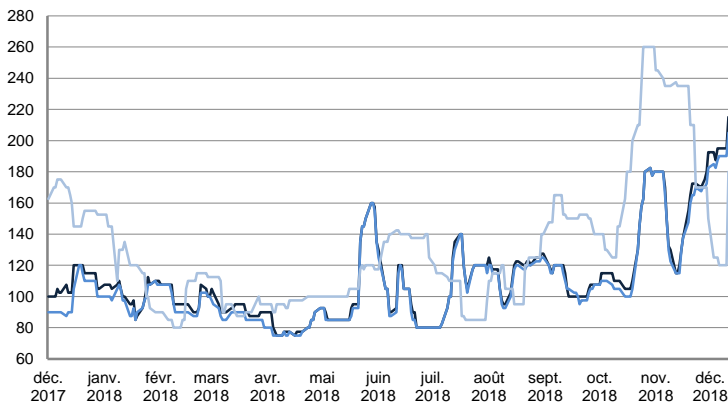


	TODAY	MONDAY	WEEKLY TREND	MTD AVERAGE
—BALTIC / UKC 100KT	68'696,0	59'546,0	▲	51354,7
—BALTIC / STATES 100KT	45'985,0	45'668,0	▲	41702,7
—NSEA / UKC 80KT	64'248,0	57'587,0	▲	46304,0

CRUDE OIL TANKERS

AFRAMAX

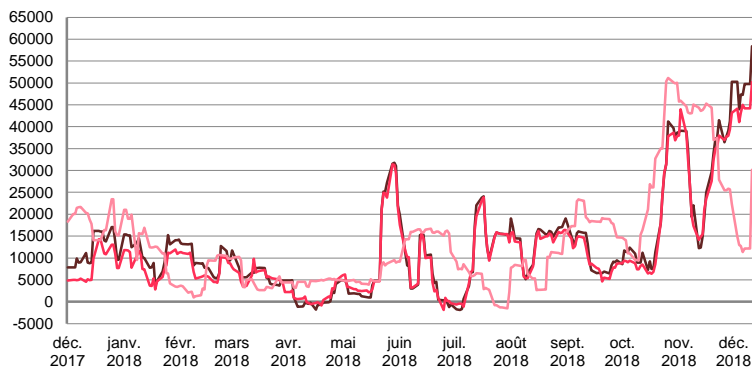
WORLDSCALE



	TODAY	MONDAY	WEEKLY TREND	MTD AVERAGE
— BSEA / MED 80kT	215,0	195,0	▲	196,4
— XMED 80kT	205,0	190,0	▲	190,0
— CAR / USA 70kT	180,0	120,0	▼	130,7

For detailed information, visit our website :  
Riverlake Online Timecharter Equivalent Calculation :  
<http://www.riverlake.ch/en/utilities/rticalc.php>

TIME CHARTER EQUIVALENT (\$/DAY)

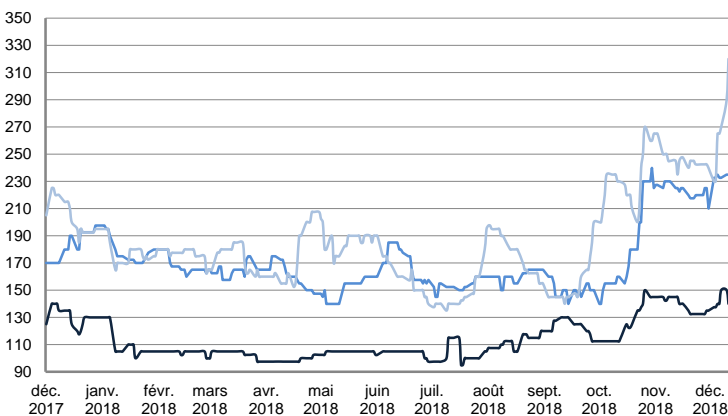


	TODAY	MONDAY	WEEKLY TREND	MTD AVERAGE
— BSEA / MED 80kT	58'389,0	49'733,0	▲	49530,9
— XMED 80kT	50'205,0	44'174,0	▲	44549,6
— CAR / USA 70kT	30'166,0	12'163,0	▼	15213,1

PRODUCT TANKERS

DPP

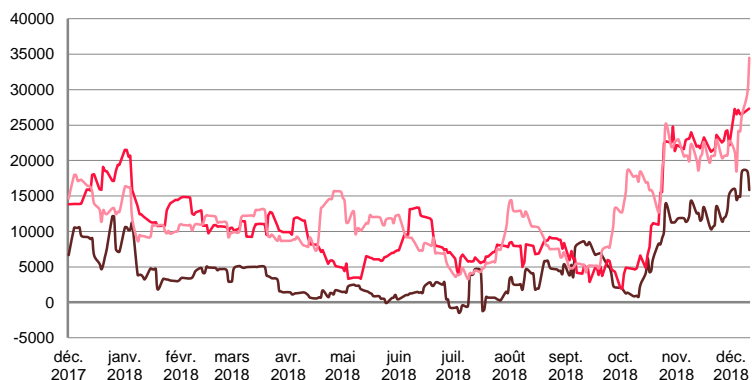
WORLDSCALE



	TODAY	MONDAY	WEEKLY TREND	MTD AVERAGE
— BALTIC / STATES 55kT	140,0	150,0	▲	142,1
— BALTIC / UKC 30kT	235,0	235,0	▼	233,6
— BSEA / MED 30kT	320,0	290,0	▲	267,1

For detailed information, visit our website :  
Riverlake Online Timecharter Equivalent Calculation :  
<http://www.riverlake.ch/en/utilities/rticalc.php>

TIME CHARTER EQUIVALENT (\$/DAY)

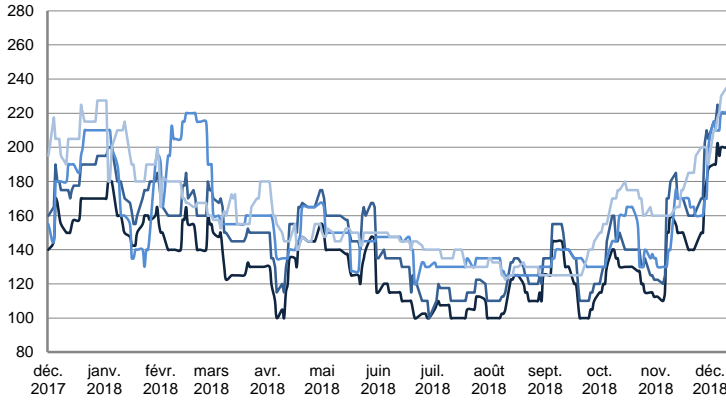


	TODAY	MONDAY	WEEKLY TREND	MTD AVERAGE
— BALTIC / STATES 55kT	15'842,0	18'459,0	▲	16157,0
— BALTIC / UKC 30kT	27'305,0	27'124,0	▲	26915,6
— BSEA / MED 30kT	34'481,0	29'593,0	▲	25497,1

PRODUCT TANKERS

CPP

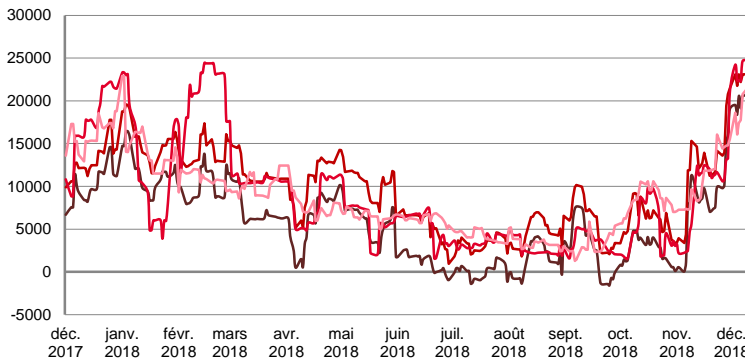
WORLDSCALE



	TODAY	MONDAY	WEEKLY TREND	MTD AVERAGE
—UKC / STATES 37kT	205,0	200,0	▲	197,5
—UKC / WAF 33kT	225,0	220,0	▲	220,0
—BALTIC / UKC 30kT	220,0	220,0	▲	215,0
—BSEA / MED 30kT	235,0	235,0	▲	222,5

For detailed information, visit our website :  
Riverlake Online Timecharter Equivalent Calculation :  
<http://www.riverlake.ch/en/utilities/rticalc.php>

TIME CHARTER EQUIVALENT (\$/DAY)

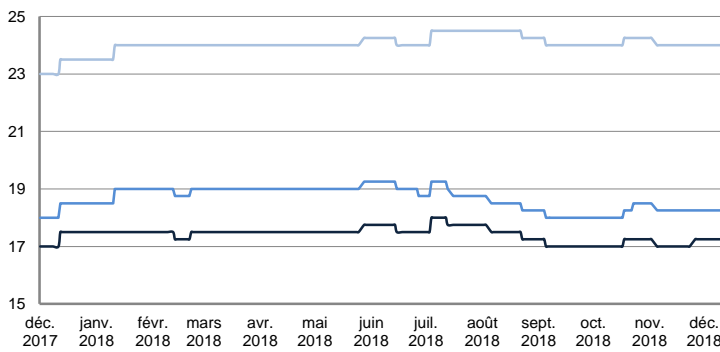


	TODAY	MONDAY	WEEKLY TREND	MTD AVERAGE
—UKC / STATES 37kT	21'741,0	20'575,0	▲	20067,9
—UKC / WAF 33kT	24'133,0	23'087,0	▲	22923,6
—BALTIC / UKC 30kT	24'811,0	24'642,0	▲	23630,7
—BSEA / MED 30kT	21'752,0	21'577,0	▲	19136,4

SMALL TANKERS

DPP

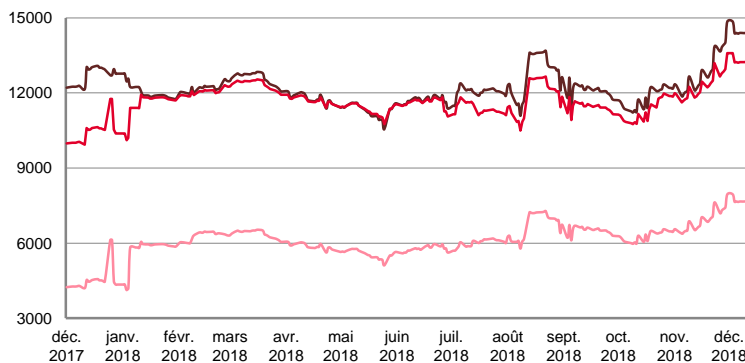
\$/T



	TODAY	MONDAY	WEEKLY TREND	MTD AVERAGE
—BALTIC / UKC 15kT	17,3	17,3	▬	17,3
—BALTIC / UKC 12kT	18,3	18,3	▬	18,3
—BALTIC / UKC 6kT	24,0	24,0	▬	24,0

For detailed information, visit our website :  
Riverlake Online Timecharter Equivalent Calculation :  
<http://www.riverlake.ch/en/utilities/rticalc.php>

TIME CHARTER EQUIVALENT (\$/DAY)

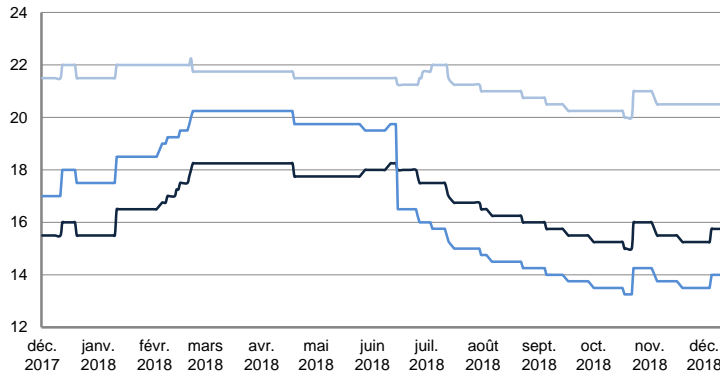


	TODAY	MONDAY	WEEKLY TREND	MTD AVERAGE
—BALTIC / UKC 15kT	14'515,0	14'401,0	▲	14474,7
—BALTIC / UKC 10kT	13'328,0	13'238,0	▲	13296,1
—BALTIC / UKC 6kT	7'737,0	7'665,0	▲	7711,4

SMALL TANKERS

CPP

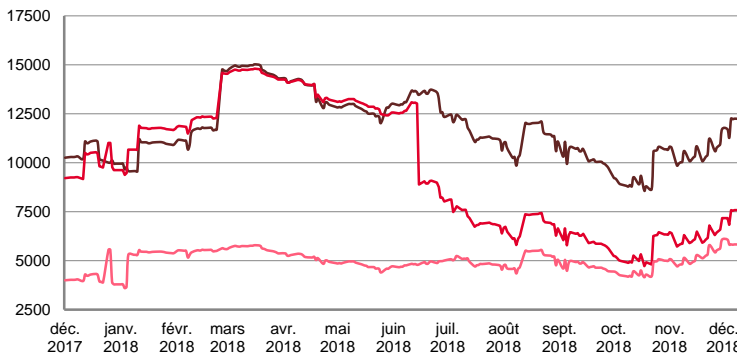
\$ / T



	TODAY	MONDAY	WEEKLY TREND	MTD AVERAGE
BALTIC / UKC 15kT	15,8	15,8	—	15,6
BALTIC / UKC 12kT	14,0	14,0	—	13,9
BALTIC / UKC 6kT	20,5	20,5	—	20,5

For detailed information, visit our website :  
Riverlake Online Timecharter Equivalent Calculation :  
<http://www.riverlake.ch/en/utilities/rtcalc.php>

TIME CHARTER EQUIVALENT (\$/DAY)

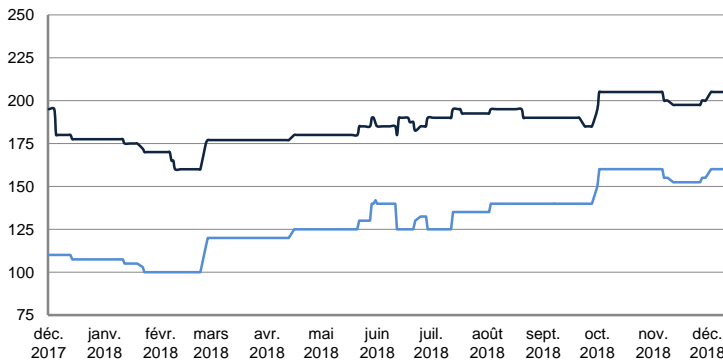


	TODAY	MONDAY	WEEKLY TREND	MTD AVERAGE
BALTIC / UKC 15kT	12'355,0	12'248,0	▲	12042,3
BALTIC / UKC 12kT	7'652,0	7'569,0	▲	7414,6
BALTIC / UKC 6kT	5'889,0	5'826,0	▲	5866,4

SMALL TANKERS - AFRICA

CPP

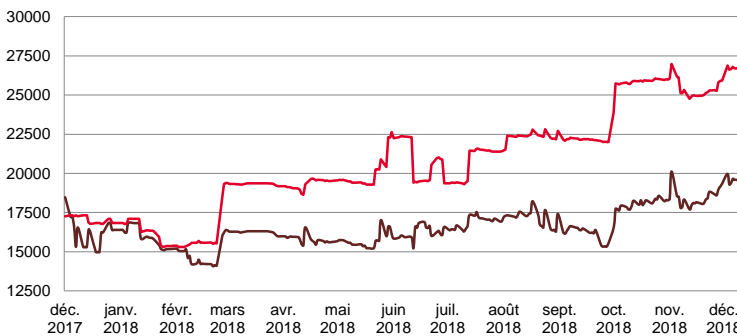
LUMPSUM (000's US\$)



	TODAY	MONDAY	WEEKLY TREND	MTD AVERAGE
XWAF 15kT	205'000,0	205'000,0	▲	205000,0
XWAF 10kT	160'000,0	160'000,0	▲	160000,0

For detailed information, visit our website :  
Riverlake Online Timecharter Equivalent Calculation :  
<http://www.riverlake.ch/en/utilities/rtcalc.php>

TIME CHARTER EQUIVALENT (\$/DAY)



	TODAY	MONDAY	WEEKLY TREND	MTD AVERAGE
XWAF 15kT	19'680,0	19'594,0	▲	19595,9
XWAF 10kT	26'737,0	26'695,0	▲	26728,0

For other RTI's, fixture reports, analysis and forecasts go to [www.riverlake.ch](http://www.riverlake.ch).

Disclaimer:  
This report has been prepared by Riverlake Shipping S.A. The rates contained herein are indicative only. Rate indications are as of the date of publication and are subject to change without notice. Riverlake Shipping S.A. does not assume any liability or responsibility for the correctness or completeness of the information contained herein. The above report is Copyright of Riverlake Shipping S.A. No unauthorised reproduction or redistribution without permission from Riverlake Shipping S.A.