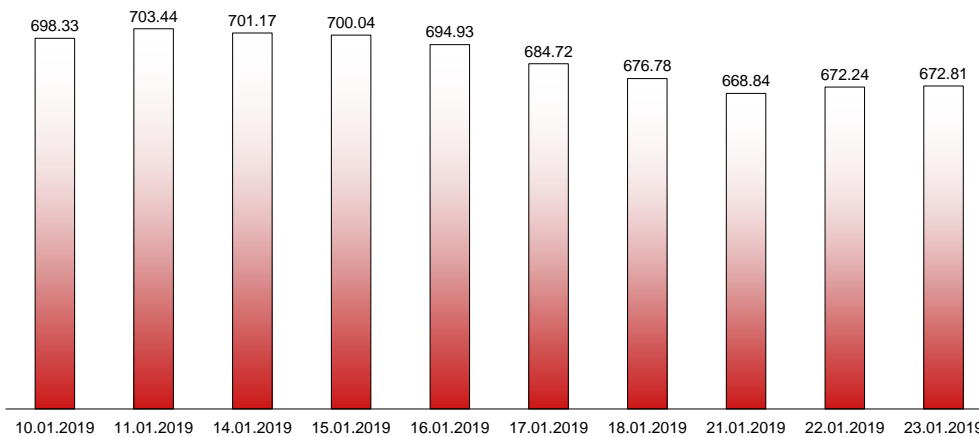


23.01.2019

**RIVERLAKE european TANKER INDEX (ReTI)\***



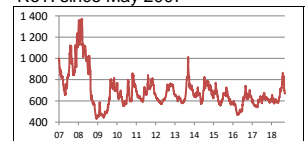
ReTI values

Max	24.07.08	1372.70
Today		672.81
Min	28.04.09	431.82

ReTI trends

daily	0.57
avg last decade	-116.30
avg last 30 days	39.50

ReTI since May 2007



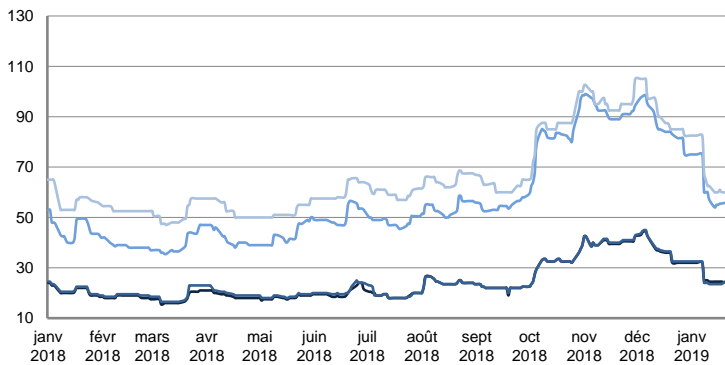
\* The Riverlake european Tanker Index (ReTI) is a composite index. All main European tanker movements are represented being six crude oil tanker routes, six clean petroleum products tanker routes and five dirty petroleum tanker routes. The oil tanker stems represented are between 6'000 MT to 135'000 MT. It covers all regions in Europe including the North Sea, Baltic Sea, UKContinent, Mediterranean and Black Sea.

**RIVERLAKE TANKER INDEX (RTI)**

**CRUDE OIL TANKERS**

VLCC

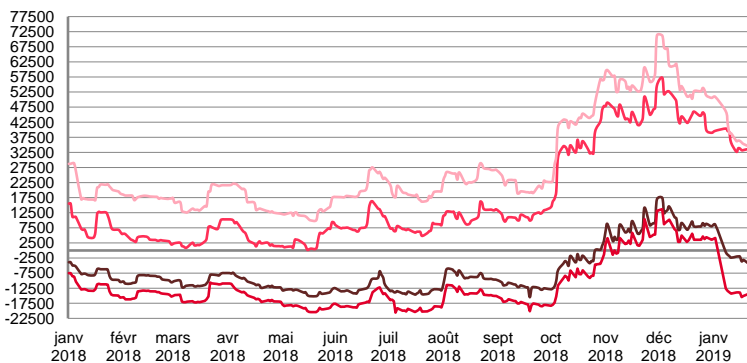
**WORLDSCALE**



	TODAY	TUESDAY	WEEKLY TREND	MTD AVERAGE
AG / USG 280kT	25.0	25.0	▼	26.8
AG / UKC 280kT	26.0	26.0	▼	26.6
AG / EAST 270kT	57.5	56.0	▼	62.1
WAF / USG 260kT	60.0	60.0	▼	67.7

For detailed information, visit our website :  
Riverlake Online Timecharter Equivalent Calculation :  
<http://www.riverlake.ch/en/utilities/rticalc.php>

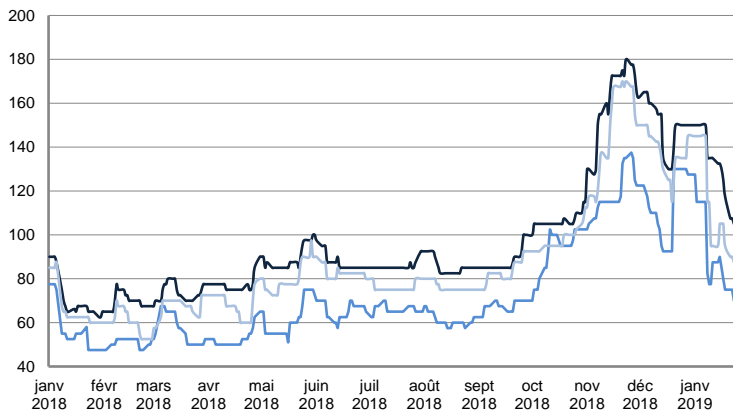
**TIME CHARTER EQUIVALENT (\$/DAY)**



	TODAY	TUESDAY	WEEKLY TREND	MTD AVERAGE
AG / USG 280kT	-4 051.0	-3 767.0	▼	-1736.5
AG / UKC 280kT	-14 333.0	-14 038.0	▼	-12695.3
AG / EAST 270kT	34 472.0	33 092.0	▼	35580.2
WAF / USG 260kT	34 213.0	34 310.0	▼	38466.6

**SUEZMAX**

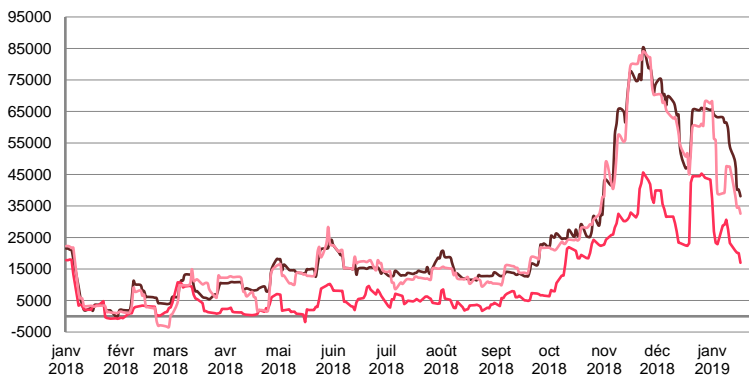
**WORLDSCALE**



	TODAY	TUESDAY	WEEKLY TREND	MTD AVERAGE
—BSEA / MED 135KT	105.0	107.5	▼	132.2
—WAF / USG 130KT	70.0	75.0	▼	67.7
—XMED 135KT	87.5	90.0	▼	112.8

For detailed information, visit our website :  
Riverlake Online Timecharter Equivalent Calculation :  
<http://www.riverlake.ch/en/utilities/rticalc.php>

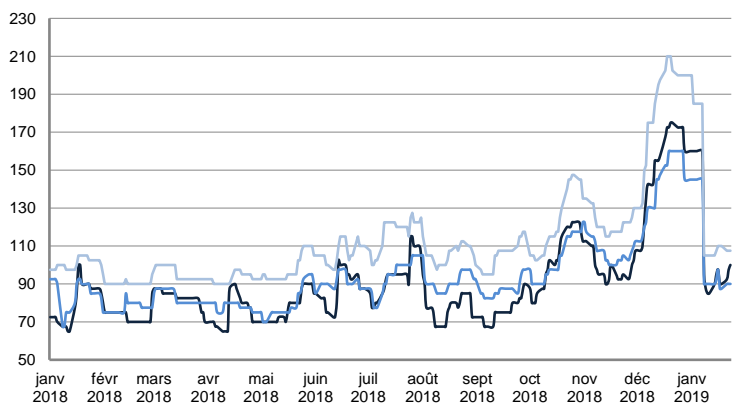
**TIME CHARTER EQUIVALENT (\$/DAY)**



	TODAY	TUESDAY	WEEKLY TREND	MTD AVERAGE
—BSEA / MED 135KT	38 090.0	40 222.0	▲	55639.3
—WAF / USG 130KT	16 981.0	20 026.0	▼	25228.6
—XMED 135KT	32 565.0	34 761.0	▼	44668.0

**AFRAMAX**

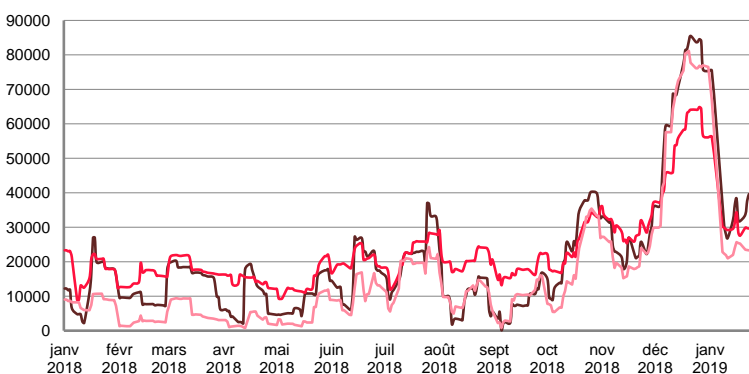
**WORLDSCALE**



	TODAY	TUESDAY	WEEKLY TREND	MTD AVERAGE
—BALTIC / UKC 100KT	100.0	97.5	▼	112.1
—BALTIC / STATES 100KT	90.0	90.0	▼	106.5
—NSEA / UKC 80KT	107.5	107.5	▼	130.9

For detailed information, visit our website :  
Riverlake Online Timecharter Equivalent Calculation :  
<http://www.riverlake.ch/en/utilities/rticalc.php>

**TIME CHARTER EQUIVALENT (\$/DAY)**

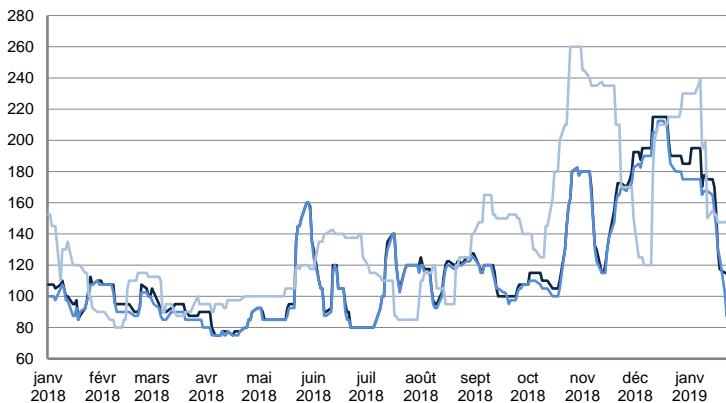


	TODAY	TUESDAY	WEEKLY TREND	MTD AVERAGE
—BALTIC / UKC 100KT	39 595.0	37 656.0	▼	36867.7
—BALTIC / STATES 100KT	29 631.0	29 717.0	▼	31964.6
—NSEA / UKC 80KT	23 312.0	23 387.0	▼	26737.5

CRUDE OIL TANKERS

AFRAMAX

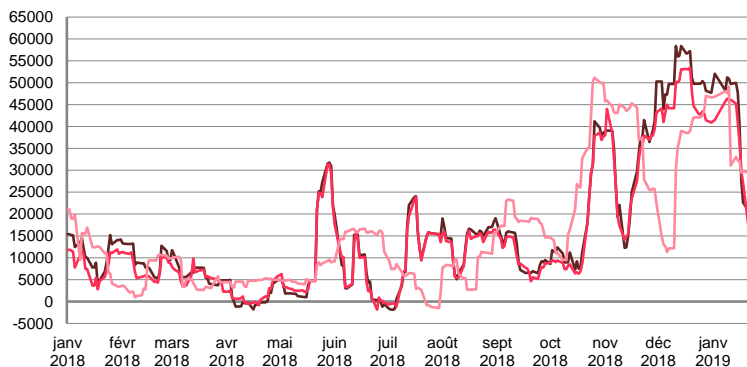
WORLDSCALE



	TODAY	TUESDAY	WEEKLY TREND	MTD AVERAGE
—BSEA / MED 80kT	110.0	115.0	▼	161.9
—XMED 80kT	92.5	87.5	▼	149.7
—CAR / USA 70kT	155.0	147.5	▼	182.6

For detailed information, visit our website :  
Riverlake Online Timecharter Equivalent Calculation :  
<http://www.riverlake.ch/en/utilities/rticalc.php>

TIME CHARTER EQUIVALENT (\$/DAY)

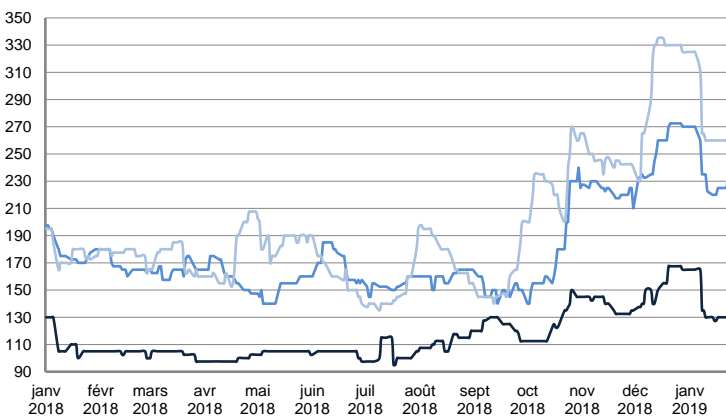


	TODAY	TUESDAY	WEEKLY TREND	MTD AVERAGE
—BSEA / MED 80kT	18 296.0	20 760.0	▼	38506.2
—XMED 80kT	12 995.0	10 915.0	▼	34338.2
—CAR / USA 70kT	32 005.0	29 345.0	▼	36169.8

PRODUCT TANKERS

DPP

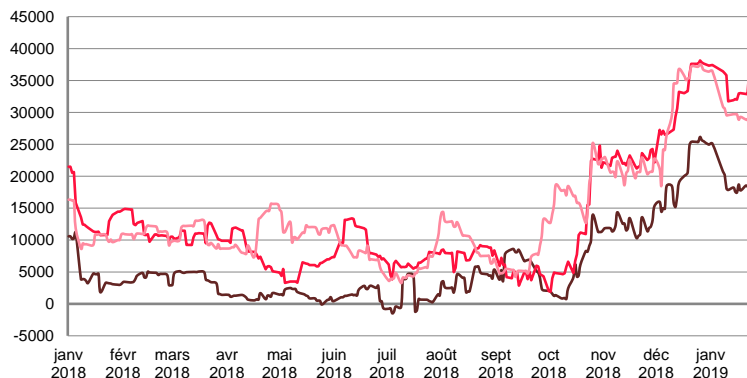
WORLDSCALE



	TODAY	TUESDAY	WEEKLY TREND	MTD AVERAGE
—BALTIC / STATES 55kT	130.0	130.0	▼	140.6
—BALTIC / UKC 30kT	240.0	225.0	▼	239.3
—BSEA / MED 30kT	265.0	260.0	▼	279.1

For detailed information, visit our website :  
Riverlake Online Timecharter Equivalent Calculation :  
<http://www.riverlake.ch/en/utilities/rticalc.php>

TIME CHARTER EQUIVALENT (\$/DAY)

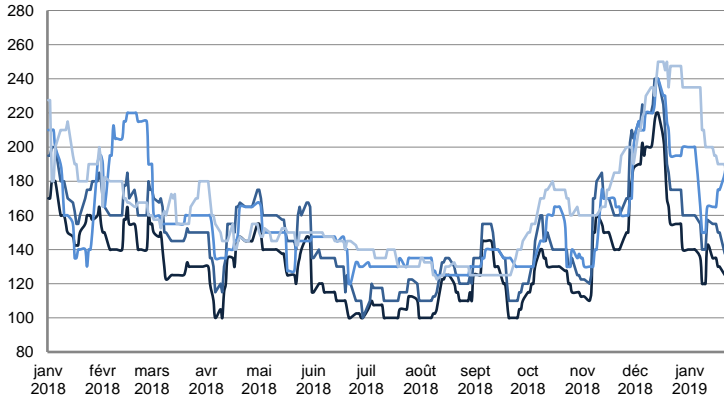


	TODAY	TUESDAY	WEEKLY TREND	MTD AVERAGE
—BALTIC / STATES 55kT	18 288.0	18 374.0	▼	18997.8
—BALTIC / UKC 30kT	36 721.0	32 839.0	▼	33999.8
—BSEA / MED 30kT	29 639.0	28 856.0	▼	30140.9

PRODUCT TANKERS

CPP

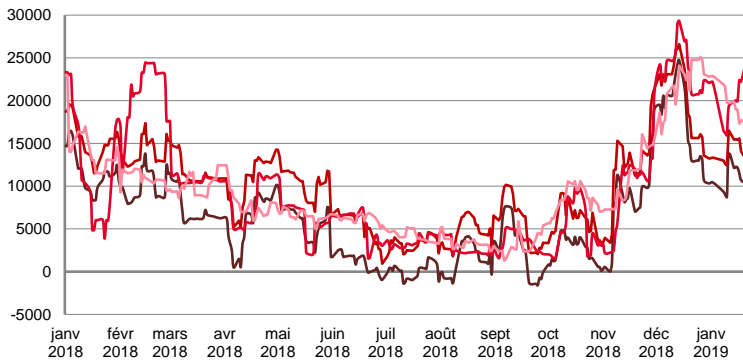
WORLDSCALE



	TODAY	TUESDAY	WEEKLY TREND	MTD AVERAGE
UKC / STATES 37kT	125.0	125.0	▼	131.6
UKC / WAF 33kT	137.5	137.5	▼	150.0
BALTIC / UKC 30kT	185.0	195.0	▼	175.9
BSEA / MED 30kT	175.0	180.0	▼	206.5

For detailed information, visit our website :  
Riverlake Online Timecharter Equivalent Calculation :  
<http://www.riverlake.ch/en/utilities/rticalc.php>

TIME CHARTER EQUIVALENT (\$/DAY)

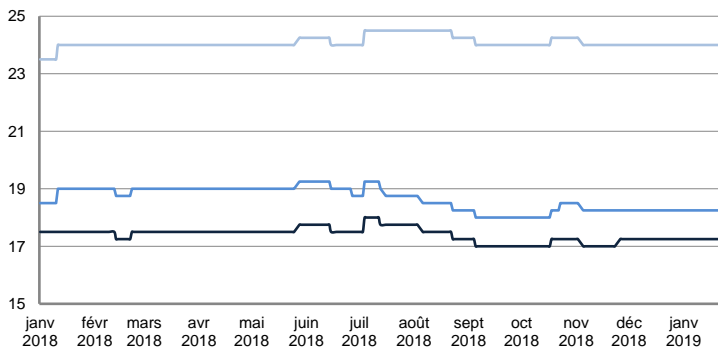


	TODAY	TUESDAY	WEEKLY TREND	MTD AVERAGE
UKC / STATES 37kT	10 106.0	10 165.0	▼	10814.5
UKC / WAF 33kT	12 793.0	12 852.0	▼	14042.2
BALTIC / UKC 30kT	24 768.0	27 390.0	▼	20895.8
BSEA / MED 30kT	14 610.0	15 564.0	▼	18939.3

SMALL TANKERS

DPP

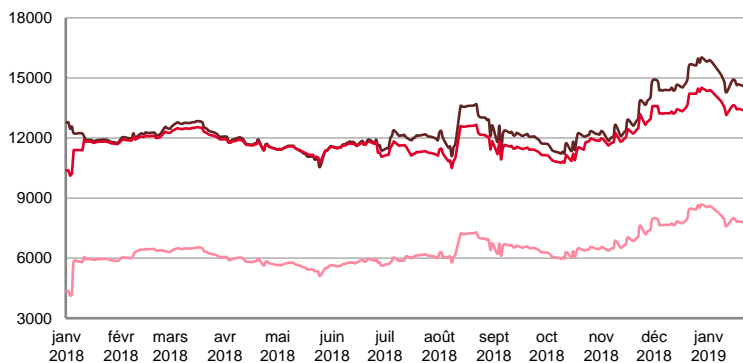
\$ / T



	TODAY	TUESDAY	WEEKLY TREND	MTD AVERAGE
BALTIC / UKC 15kT	17.3	17.3	▬	17.3
BALTIC / UKC 12kT	18.3	18.3	▬	18.3
BALTIC / UKC 6kT	24.0	24.0	▬	24.0

For detailed information, visit our website :  
Riverlake Online Timecharter Equivalent Calculation :  
<http://www.riverlake.ch/en/utilities/rticalc.php>

TIME CHARTER EQUIVALENT (\$/DAY)

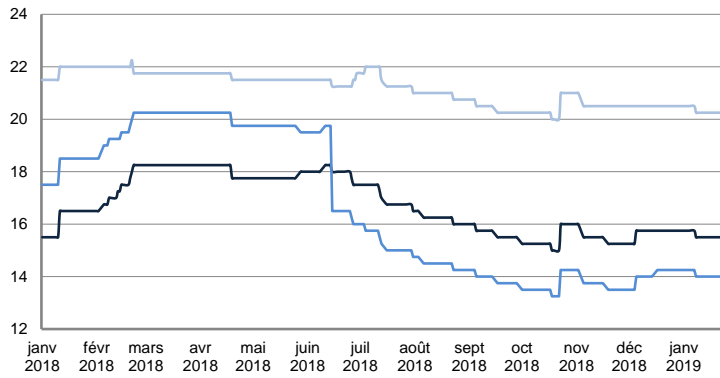


	TODAY	TUESDAY	WEEKLY TREND	MTD AVERAGE
BALTIC / UKC 15kT	14 527.0	14 558.0	▼	14820.2
BALTIC / UKC 10kT	13 338.0	13 362.0	▼	13568.3
BALTIC / UKC 6kT	7 744.0	7 764.0	▼	7928.5

SMALL TANKERS

CPP

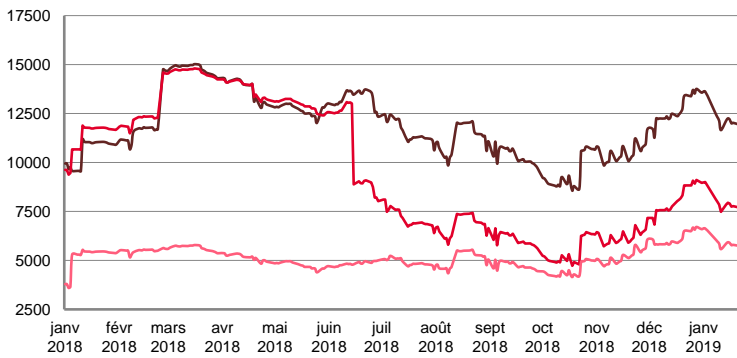
\$ / T



	TODAY	TUESDAY	WEEKLY TREND	MTD AVERAGE
BALTIC / UKC 15KT	15.5	15.5	▼	15.6
BALTIC / UKC 12KT	14.0	14.0	▼	14.1
BALTIC / UKC 6KT	20.3	20.3	▼	20.3

For detailed information, visit our website :  
Riverlake Online Timecharter Equivalent Calculation :  
<http://www.riverlake.ch/en/utilities/rtcalc.php>

TIME CHARTER EQUIVALENT (\$/DAY)

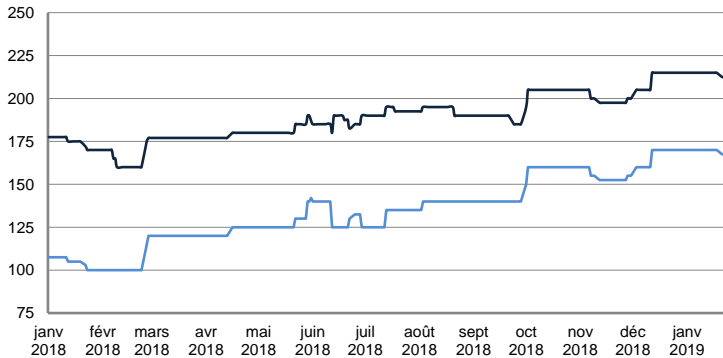


	TODAY	TUESDAY	WEEKLY TREND	MTD AVERAGE
BALTIC / UKC 15KT	11 885.0	11 914.0	▼	12195.2
BALTIC / UKC 12KT	7 661.0	7 684.0	▼	7901.6
BALTIC / UKC 6KT	5 713.0	5 730.0	▼	5886.4

SMALL TANKERS - AFRICA

CPP

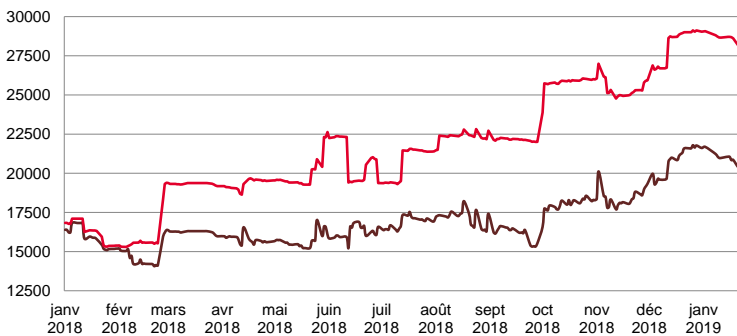
LUMPSUM (000's US\$)



	TODAY	TUESDAY	WEEKLY TREND	MTD AVERAGE
XWAF 15KT	212 500.0	212 500.0	▼	214558.8
XWAF 10KT	167 500.0	167 500.0	▼	169558.8

For detailed information, visit our website :  
Riverlake Online Timecharter Equivalent Calculation :  
<http://www.riverlake.ch/en/utilities/rtcalc.php>

TIME CHARTER EQUIVALENT (\$/DAY)



	TODAY	TUESDAY	WEEKLY TREND	MTD AVERAGE
XWAF 15KT	20 394.0	20 436.0	▼	20921.6
XWAF 10KT	28 138.0	28 169.0	▼	28597.5

For other RTI's, fixture reports, analysis and forecasts go to [www.riverlake.ch](http://www.riverlake.ch).

Disclaimer:  
This report has been prepared by Riverlake Shipping S.A. The rates contained herein are indicative only. Rate indications are as of the date of publication and are subject to change without notice. Riverlake Shipping S.A. does not assume any liability or responsibility for the correctness or completeness of the information contained herein. The above report is Copyright of Riverlake Shipping S.A. No unauthorised reproduction or redistribution without permission from Riverlake Shipping S.A.