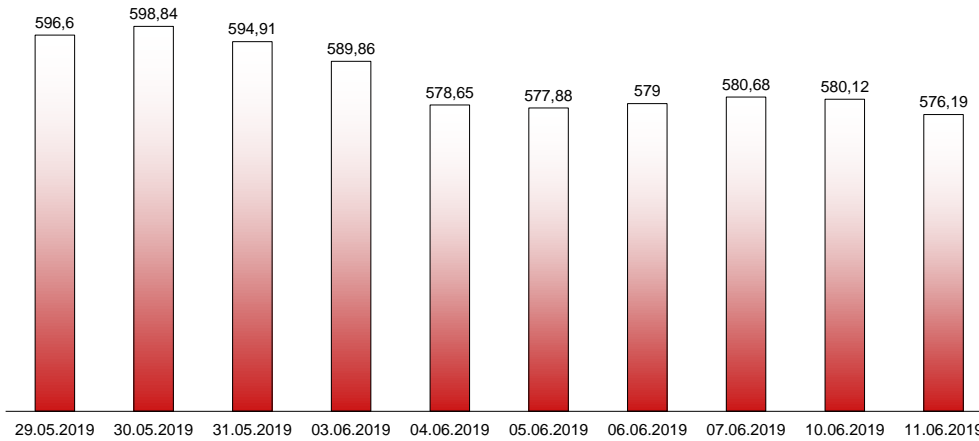


11.06.2019

RIVERLAKE european TANKER INDEX (ReTI)*



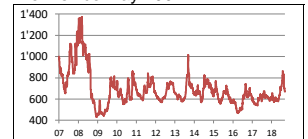
ReTI values

Max	24.07.08	1372,70
Today		576,19
Min	28.04.09	431,82

ReTI trends

daily	-3,93
avg last decade	-0,99
avg last 30 days	-27,01

ReTI since May 2007



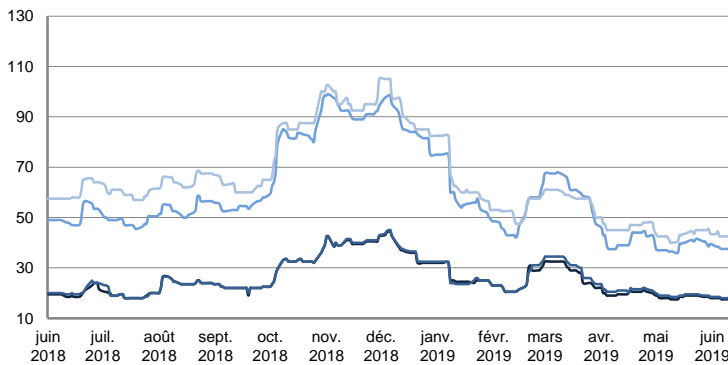
* The Riverlake european Tanker Index (ReTI) is a composite index. All main European tanker movements are represented being six crude oil tanker routes, six clean petroleum products tanker routes and five dirty petroleum tanker routes. The oil tanker stems represented are between 6'000 MT to 135'000 MT. It covers all regions in Europe including the North Sea, Baltic Sea, UKContinent, Mediterranean and Black Sea.

RIVERLAKE TANKER INDEX (RTI)

CRUDE OIL TANKERS

VLCC

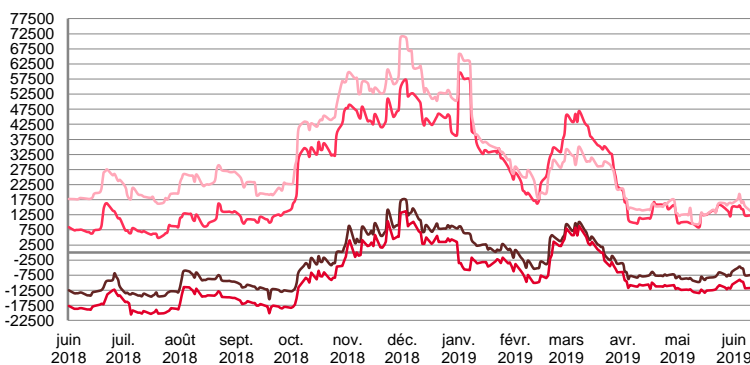
WORLDSCALE



	TODAY	MONDAY	WEEKLY TREND	MTD AVERAGE
AG / USG 280kT	17,5	17,5	▼	17,7
AG / UKC 280kT	18,0	18,0	▼	18,2
AG / EAST 270kT	37,5	37,5	▼	37,9
WAF / USG 260kT	42,5	42,5	▼	42,9

For detailed information, visit our website :
Riverlake Online Timecharter Equivalent Calculation :
<http://www.riverlake.ch/en/utilities/rticalc.php>

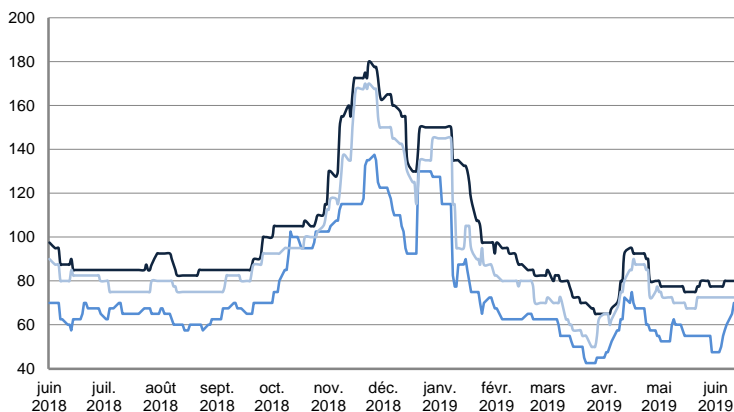
TIME CHARTER EQUIVALENT (\$/DAY)



	TODAY	MONDAY	WEEKLY TREND	MTD AVERAGE
AG / USG 280kT	-7'476,0	-7'472,0	▲	-6113,7
AG / UKC 280kT	-11'822,0	-11'811,0	▼	-10458,9
AG / EAST 270kT	12'302,0	12'335,0	▼	13759,4
WAF / USG 260kT	13'746,0	13'812,0	▲	16215,4

SUEZMAX

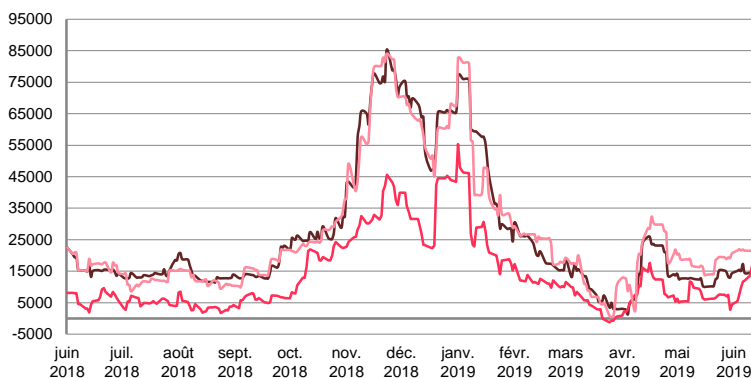
WORLDSCALE



	TODAY	MONDAY	WEEKLY TREND	MTD AVERAGE
—BSEA / MED 135KT	80,0	80,0	▲	78,9
—WAF / USG 130KT	70,0	65,0	▬	42,9
—XMED 135KT	72,5	72,5	▲	72,5

For detailed information, visit our website :
Riverlake Online Timecharter Equivalent Calculation :
<http://www.riverlake.ch/en/utilities/rticalc.php>

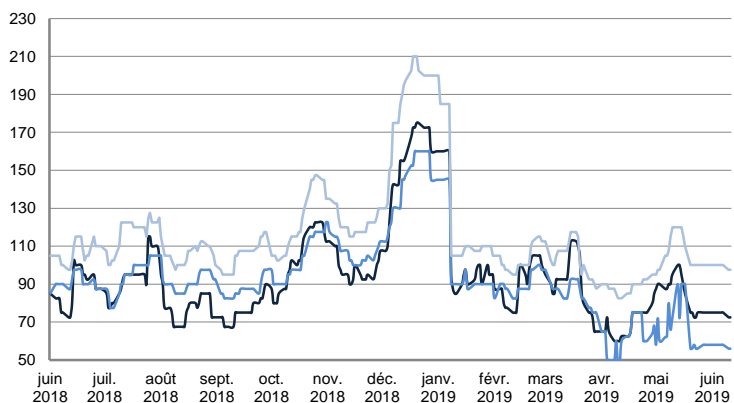
TIME CHARTER EQUIVALENT (\$/DAY)



	TODAY	MONDAY	WEEKLY TREND	MTD AVERAGE
—BSEA / MED 135KT	14'543,0	14'554,0	▲	15216,9
—WAF / USG 130KT	16'647,0	13'733,0	▲	10981,6
—XMED 135KT	21'522,0	21'495,0	▲	21649,1

AFRAMAX

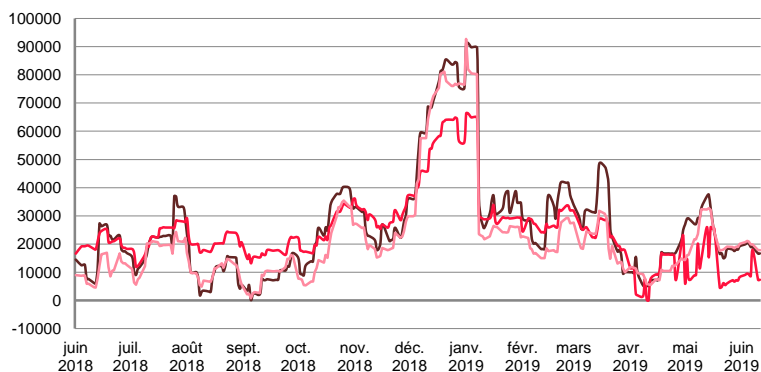
WORLDSCALE



	TODAY	MONDAY	WEEKLY TREND	MTD AVERAGE
—BALTIC / UKC 100KT	72,5	72,5	▬	74,3
—BALTIC / STATES 100KT	56,0	56,0	▲	57,4
—NSEA / UKC 80KT	97,5	97,5	▼	99,3

For detailed information, visit our website :
Riverlake Online Timecharter Equivalent Calculation :
<http://www.riverlake.ch/en/utilities/rticalc.php>

TIME CHARTER EQUIVALENT (\$/DAY)

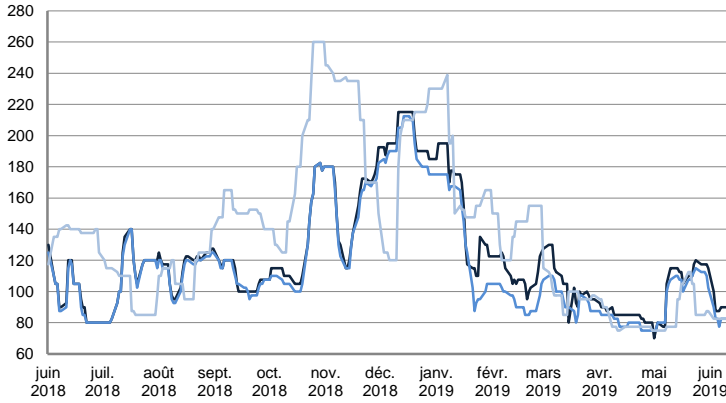


	TODAY	MONDAY	WEEKLY TREND	MTD AVERAGE
—BALTIC / UKC 100KT	16'683,0	16'648,0	▲	18808,6
—BALTIC / STATES 100KT	7'339,0	7'332,0	▲	9881,1
—NSEA / UKC 80KT	17'868,0	17'839,0	▲	19740,1

CRUDE OIL TANKERS

AFRAMAX

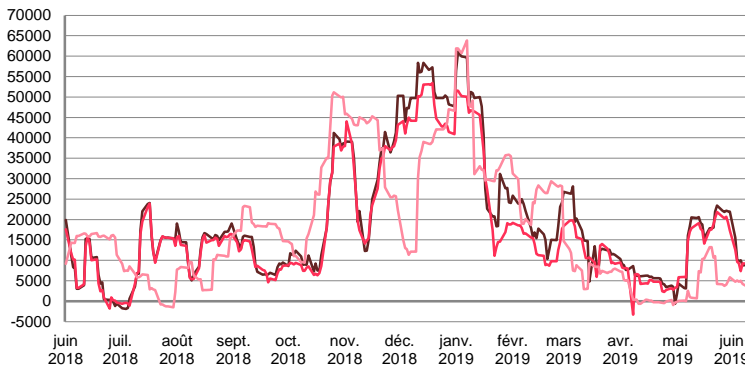
WORLDSCALE



	TODAY	MONDAY	WEEKLY TREND	MTD AVERAGE
— BSEA / MED 80kT	90,0	90,0	▼	90,4
— XMED 80kT	82,5	82,5	▼	82,9
— CAR / USA 70kT	82,5	82,5	▼	82,5

For detailed information, visit our website :
Riverlake Online Timecharter Equivalent Calculation :
<http://www.riverlake.ch/en/utilities/rticalc.php>

TIME CHARTER EQUIVALENT (\$/DAY)

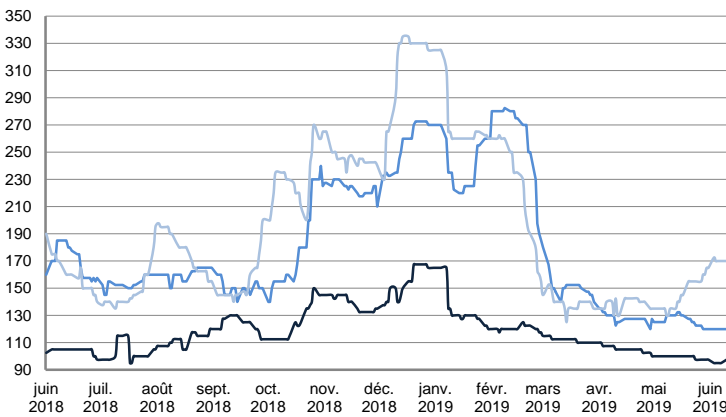


	TODAY	MONDAY	WEEKLY TREND	MTD AVERAGE
— BSEA / MED 80kT	8'896,0	8'907,0	▼	10305,7
— XMED 80kT	9'225,0	9'215,0	▼	9504,3
— CAR / USA 70kT	3'370,0	3'402,0	▼	4354,1

PRODUCT TANKERS

DPP

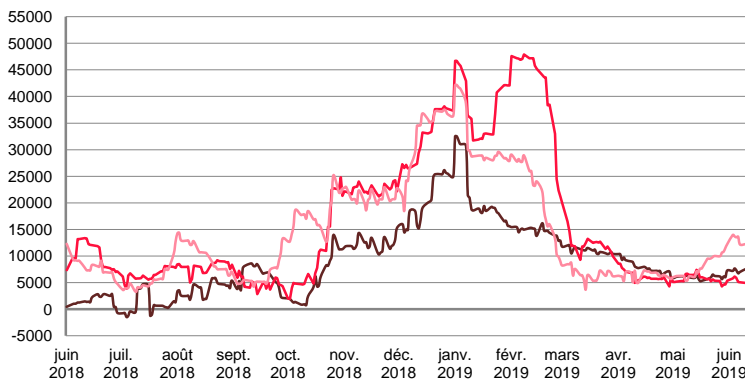
WORLDSCALE



	TODAY	MONDAY	WEEKLY TREND	MTD AVERAGE
— BALTIC / STATES 55kT	97,5	97,5	▼	95,7
— BALTIC / UKC 30kT	120,0	120,0	▼	120,0
— BSEA / MED 30kT	170,0	170,0	▲	170,4

For detailed information, visit our website :
Riverlake Online Timecharter Equivalent Calculation :
<http://www.riverlake.ch/en/utilities/rticalc.php>

TIME CHARTER EQUIVALENT (\$/DAY)

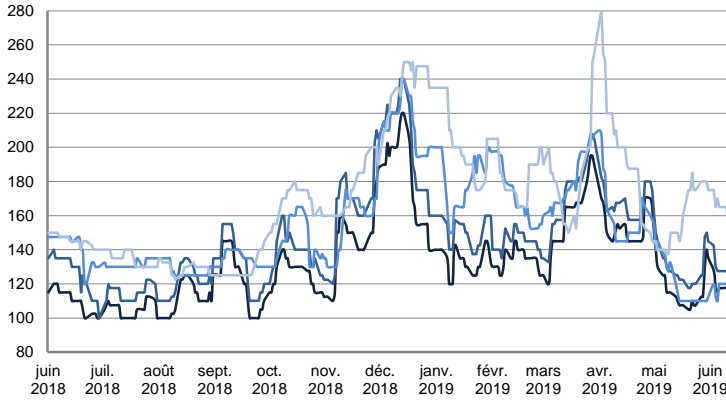


	TODAY	MONDAY	WEEKLY TREND	MTD AVERAGE
— BALTIC / STATES 55kT	7'537,0	7'529,0	▲	7283,6
— BALTIC / UKC 30kT	4'942,0	4'917,0	▼	5405,0
— BSEA / MED 30kT	12'226,0	12'242,0	▲	13062,9

PRODUCT TANKERS

CPP

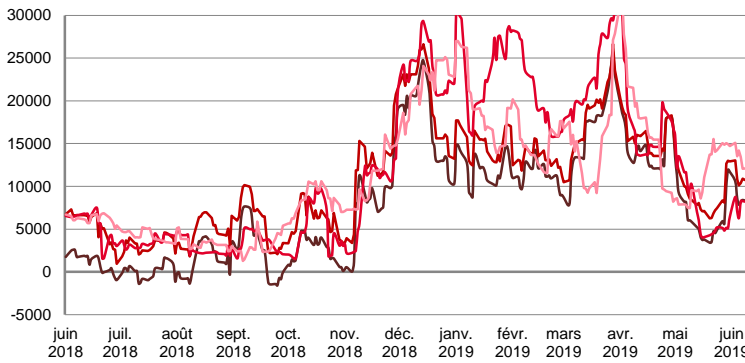
WORLDSCALE



	TODAY	MONDAY	WEEKLY TREND	MTD AVERAGE
—UKC / STATES 37kT	115,0	117,5	▲	118,2
—UKC / WAF 33kT	125,0	127,5	▲	129,6
—BALTIC / UKC 30kT	120,0	120,0	▲	117,5
—BSEA / MED 30kT	150,0	165,0	▼	165,0

For detailed information, visit our website :
Riverlake Online Timecharter Equivalent Calculation :
<http://www.riverlake.ch/en/utilities/rticalc.php>

TIME CHARTER EQUIVALENT (\$/DAY)

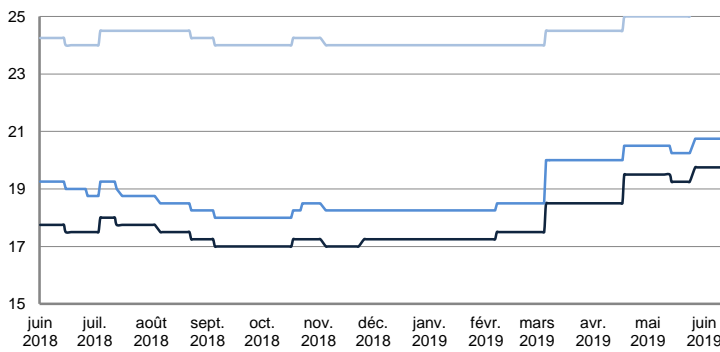


	TODAY	MONDAY	WEEKLY TREND	MTD AVERAGE
—UKC / STATES 37kT	7'595,0	8'149,0	▲	8479,6
—UKC / WAF 33kT	10'042,0	10'545,0	▲	10824,0
—BALTIC / UKC 30kT	8'155,0	8'138,0	▲	7859,7
—BSEA / MED 30kT	9'500,0	12'127,0	▼	12840,1

SMALL TANKERS

DPP

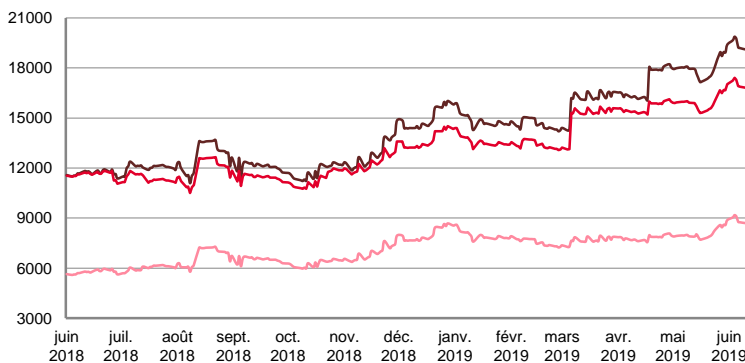
\$/T



	TODAY	MONDAY	WEEKLY TREND	MTD AVERAGE
—BALTIC / UKC 15kT	19,8	19,8	▬	19,8
—BALTIC / UKC 12kT	20,8	20,8	▬	20,8
—BALTIC / UKC 6kT	25,5	25,5	▬	25,5

For detailed information, visit our website :
Riverlake Online Timecharter Equivalent Calculation :
<http://www.riverlake.ch/en/utilities/rticalc.php>

TIME CHARTER EQUIVALENT (\$/DAY)

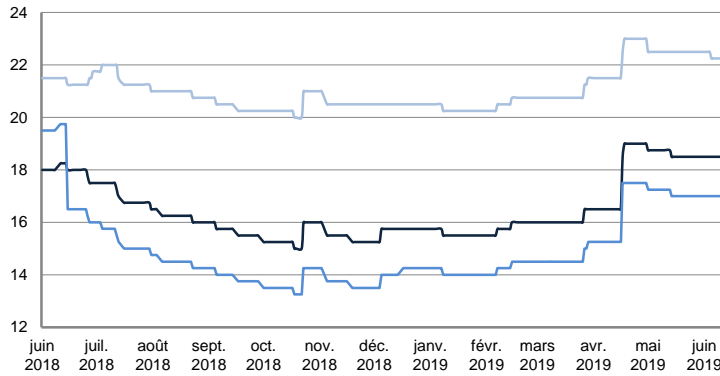


	TODAY	MONDAY	WEEKLY TREND	MTD AVERAGE
—BALTIC / UKC 15kT	19'129,0	19'113,0	▲	19421,7
—BALTIC / UKC 10kT	16'821,0	16'809,0	▲	17051,3
—BALTIC / UKC 6kT	8'709,0	8'699,0	▲	8892,7

SMALL TANKERS

CPP

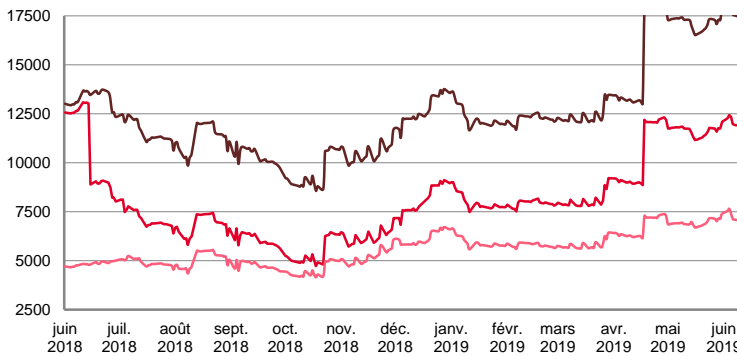
\$ / T



	TODAY	MONDAY	WEEKLY TREND	MTD AVERAGE
BALTIC / UKC 15KT	18,5	18,5	▬	18,5
BALTIC / UKC 12KT	17,0	17,0	▬	17,0
BALTIC / UKC 6KT	22,3	22,3	▾	22,3

For detailed information, visit our website :
Riverlake Online Timecharter Equivalent Calculation :
<http://www.riverlake.ch/en/utilities/rtcalc.php>

TIME CHARTER EQUIVALENT (\$/DAY)

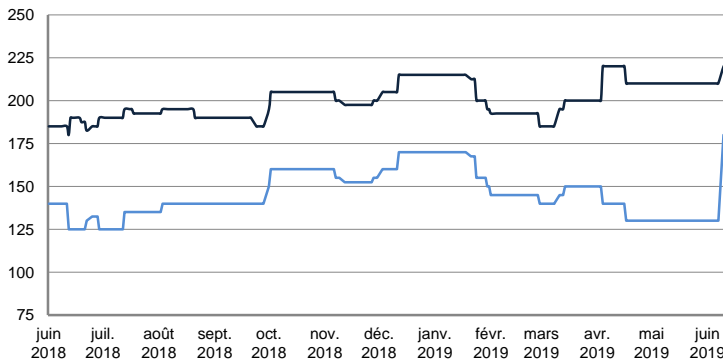


	TODAY	MONDAY	WEEKLY TREND	MTD AVERAGE
BALTIC / UKC 15KT	17'463,0	17'448,0	▲	17735,3
BALTIC / UKC 12KT	11'886,0	11'874,0	▲	12098,0
BALTIC / UKC 6KT	7'059,0	7'050,0	▲	7270,1

SMALL TANKERS - AFRICA

CPP

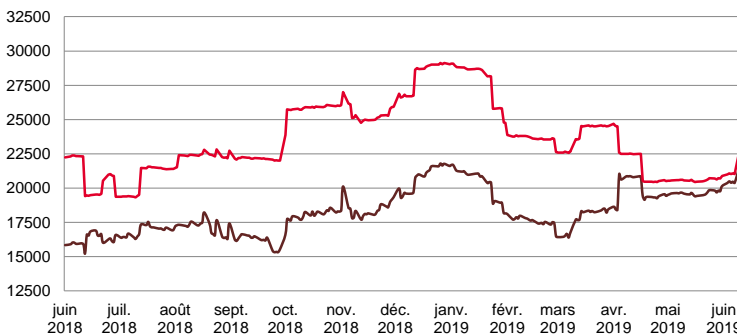
LUMPSUM (000's US\$)



	TODAY	MONDAY	WEEKLY TREND	MTD AVERAGE
XWAF 15KT	220'000,0	220'000,0	▲	212857,1
XWAF 10KT	180'000,0	180'000,0	▲	144285,7

For detailed information, visit our website :
Riverlake Online Timecharter Equivalent Calculation :
<http://www.riverlake.ch/en/utilities/rtcalc.php>

TIME CHARTER EQUIVALENT (\$/DAY)



	TODAY	MONDAY	WEEKLY TREND	MTD AVERAGE
XWAF 15KT	21'663,0	21'671,0	▲	20777,1
XWAF 10KT	30'633,0	22'951,0	▲	22685,1

For other RTI's, fixture reports, analysis and forecasts go to www.riverlake.ch.

Disclaimer:
This report has been prepared by Riverlake Shipping S.A. The rates contained herein are indicative only. Rate indications are as of the date of publication and are subject to change without notice. Riverlake Shipping S.A. does not assume any liability or responsibility for the correctness or completeness of the information contained herein. The above report is Copyright of Riverlake Shipping S.A. No unauthorised reproduction or redistribution without permission from Riverlake Shipping S.A.