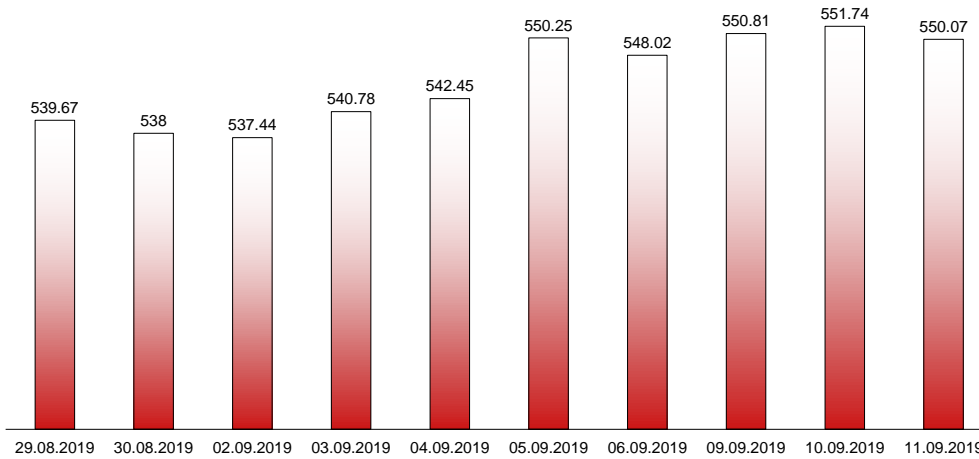


11.09.2019

**RIVERLAKE european TANKER INDEX (ReTI)\***



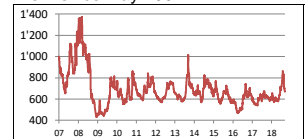
ReTI values

Max	24.07.08	1372.70
Today		550.07
Min	28.04.09	431.82

ReTI trends

daily	-1.67
avg last decade	7.26
avg last 30 days	-35.86

ReTI since May 2007



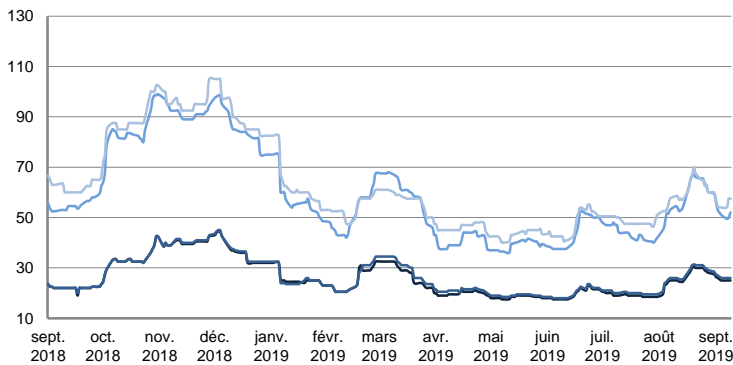
\* The Riverlake european Tanker Index (ReTI) is a composite index. All main European tanker movements are represented being six crude oil tanker routes, six clean petroleum products tanker routes and five dirty petroleum tanker routes. The oil tanker stems represented are between 6'000 MT to 135'000 MT. It covers all regions in Europe including the North Sea, Baltic Sea, UKContinent, Mediterranean and Black Sea.

**RIVERLAKE TANKER INDEX (RTI)**

**CRUDE OIL TANKERS**

VLCC

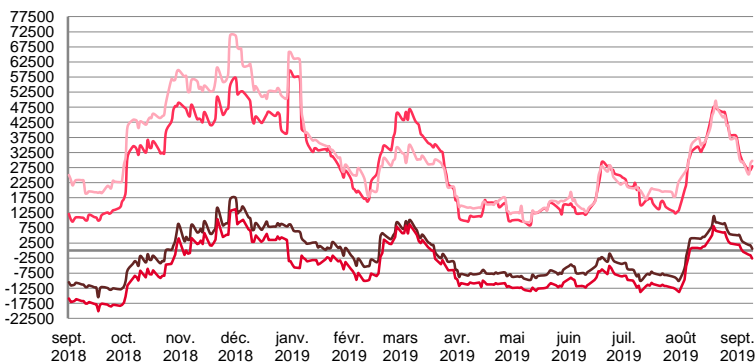
**WORLDSCALE**



	TODAY	TUESDAY	WEEKLY TREND	MTD AVERAGE
AG / USG 280kT	25.0	25.0	▼	25.7
AG / UKC 280kT	26.0	26.0	▼	26.7
AG / EAST 270kT	52.0	50.0	▼	52.9
WAF / USG 260kT	57.5	57.5	▼	56.1

For detailed information, visit our website :  
Riverlake Online Timecharter Equivalent Calculation :  
<http://www.riverlake.ch/en/utilities/rticalc.php>

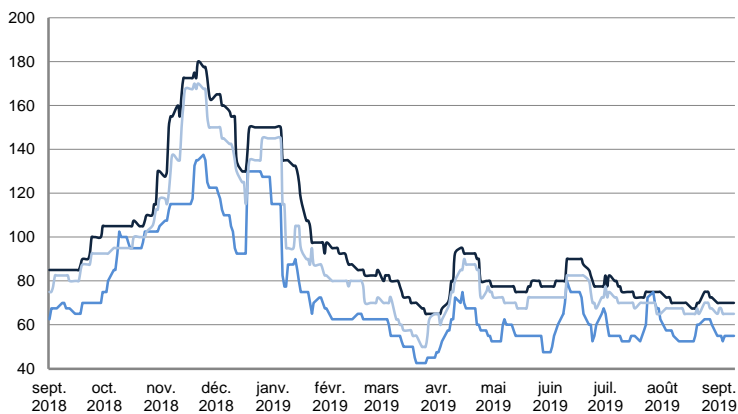
**TIME CHARTER EQUIVALENT (\$/DAY)**



	TODAY	TUESDAY	WEEKLY TREND	MTD AVERAGE
AG / USG 280kT	557.0	1'722.0	▼	3235.1
AG / UKC 280kT	-2'691.0	-1'562.0	▼	53.1
AG / EAST 270kT	27'936.0	26'671.0	▼	30944.9
WAF / USG 260kT	29'736.0	28'812.0	▼	30557.1

**SUEZMAX**

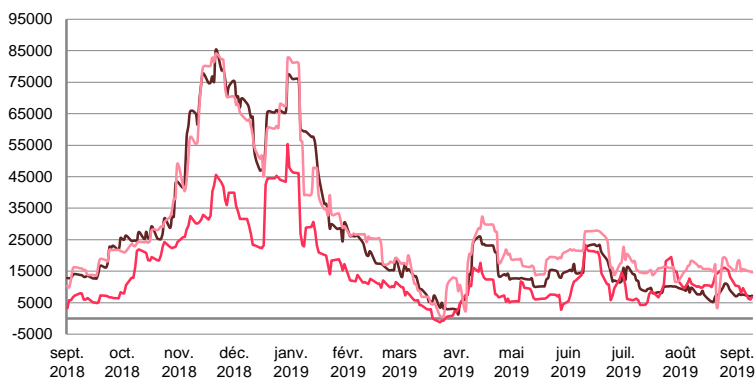
**WORLDSCALE**



	TODAY	TUESDAY	WEEKLY TREND	MTD AVERAGE
—BSEA / MED 135KT	70.0	70.0	▲	70.0
—WAF / USG 130KT	55.0	55.0	▼	56.1
—XMED 135KT	65.0	65.0	▬	65.6

For detailed information, visit our website :  
Riverlake Online Timecharter Equivalent Calculation :  
<http://www.riverlake.ch/en/utilities/rticalc.php>

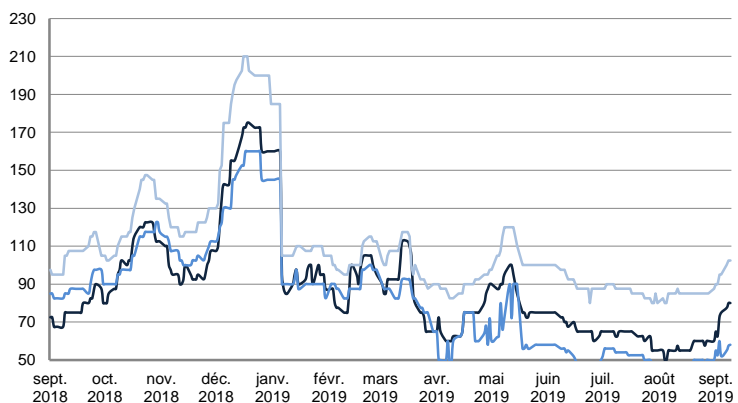
**TIME CHARTER EQUIVALENT (\$/DAY)**



	TODAY	TUESDAY	WEEKLY TREND	MTD AVERAGE
—BSEA / MED 135KT	7'229.0	7'035.0	▲	7309.8
—WAF / USG 130KT	6'696.0	5'996.0	▲	8444.8
—XMED 135KT	14'604.0	14'924.0	▲	15810.9

**AFRAMAX**

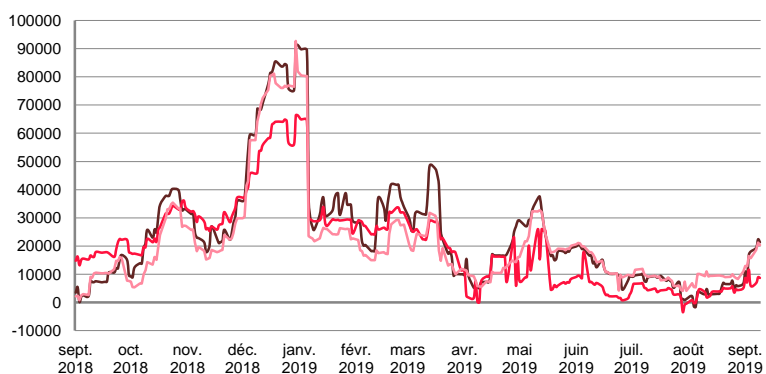
**WORLDSCALE**



	TODAY	TUESDAY	WEEKLY TREND	MTD AVERAGE
—BALTIC / UKC 100KT	80.0	80.0	▲	71.6
—BALTIC / STATES 100KT	58.0	57.5	▲	55.0
—NSEA / UKC 80KT	102.5	102.5	▲	95.3

For detailed information, visit our website :  
Riverlake Online Timecharter Equivalent Calculation :  
<http://www.riverlake.ch/en/utilities/rticalc.php>

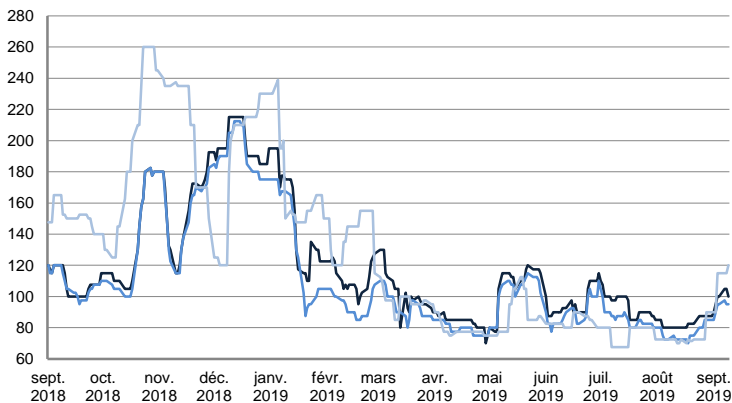
**TIME CHARTER EQUIVALENT (\$/DAY)**



	TODAY	TUESDAY	WEEKLY TREND	MTD AVERAGE
—BALTIC / UKC 100KT	21'354.0	22'390.0	▲	15576.8
—BALTIC / STATES 100KT	8'683.0	8'935.0	▲	7874.8
—NSEA / UKC 80KT	20'370.0	21'264.0	▲	16151.5

**AFRAMAX**

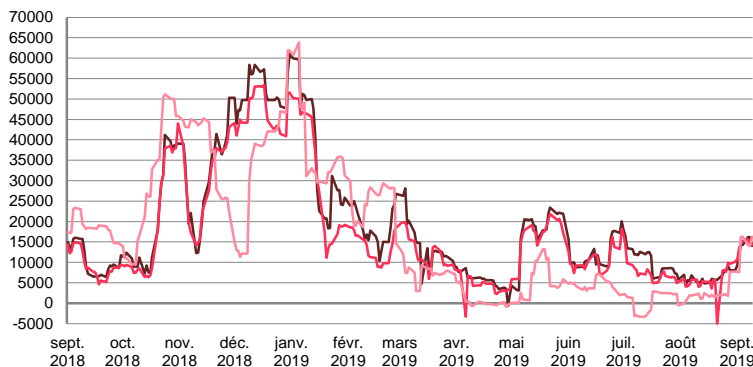
**WORLDSCALE**



	TODAY	TUESDAY	WEEKLY TREND	MTD AVERAGE
— BSEA / MED 80KT	100.0	105.0	▲	97.8
— XMED 80KT	95.0	95.0	▲	92.2
— CAR / USA 70KT	120.0	115.0	▲	106.3

For detailed information, visit our website :  
Riverlake Online Timecharter Equivalent Calculation :  
<http://www.riverlake.ch/en/utilities/rticalc.php>

**TIME CHARTER EQUIVALENT (\$/DAY)**

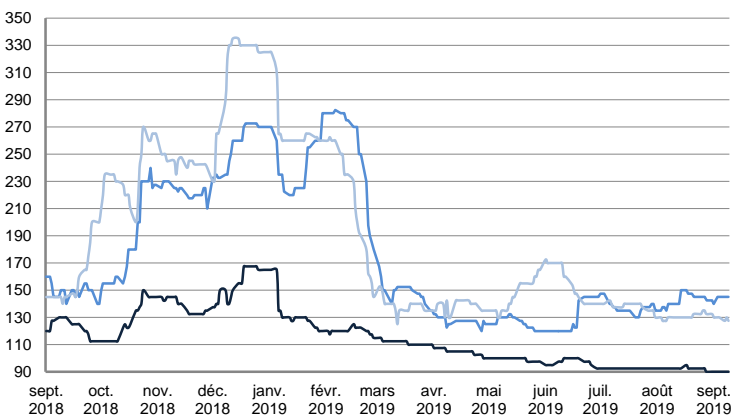


	TODAY	TUESDAY	WEEKLY TREND	MTD AVERAGE
— BSEA / MED 80KT	13'981.0	16'145.0	▲	13033.6
— XMED 80KT	14'342.0	14'536.0	▲	13595.5
— CAR / USA 70KT	16'250.0	13'985.0	▲	12489.9

PRODUCT TANKERS

**DPP**

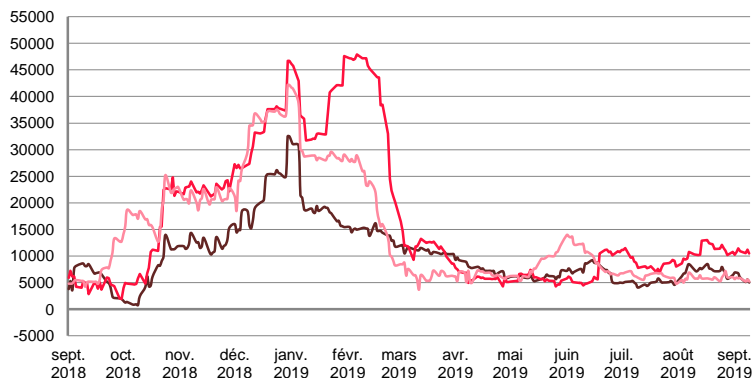
**WORLDSCALE**



	TODAY	TUESDAY	WEEKLY TREND	MTD AVERAGE
— BALTIC / STATES 55KT	90.0	90.0	▼	90.0
— BALTIC / UKC 30KT	145.0	145.0	▲	143.8
— BSEA / MED 30KT	127.5	130.0	■	129.7

For detailed information, visit our website :  
Riverlake Online Timecharter Equivalent Calculation :  
<http://www.riverlake.ch/en/utilities/rticalc.php>

**TIME CHARTER EQUIVALENT (\$/DAY)**

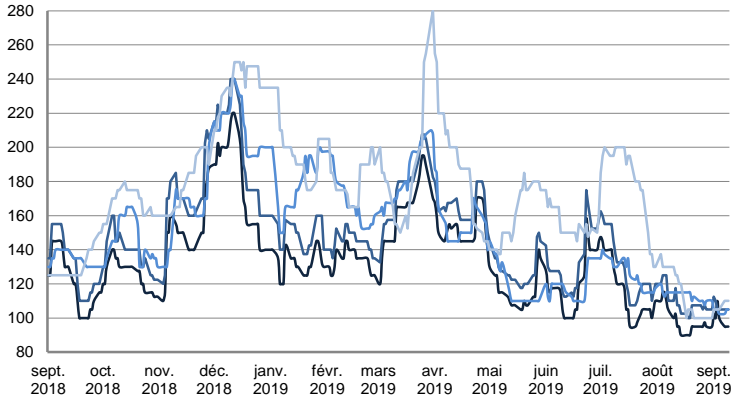


	TODAY	TUESDAY	WEEKLY TREND	MTD AVERAGE
— BALTIC / STATES 55KT	5'023.0	5'595.0	▼	6081.9
— BALTIC / UKC 30KT	10'472.0	11'171.0	▼	10792.5
— BSEA / MED 30KT	5'218.0	5'573.0	▲	5662.9

PRODUCT TANKERS

CPP

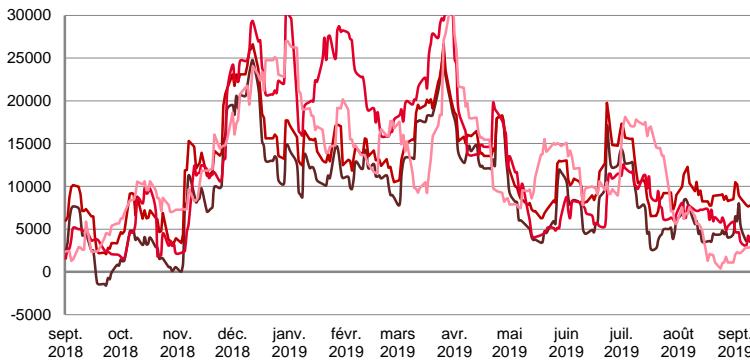
WORLDSCALE



	TODAY	TUESDAY	WEEKLY TREND	MTD AVERAGE
UKC / STATES 37kT	95.0	95.0	▲	99.1
UKC / WAF 33kT	105.0	105.0	▲	106.6
BALTIC / UKC 30kT	105.0	105.0	▼	105.0
BSEA / MED 30kT	110.0	110.0	▲	106.3

For detailed information, visit our website :  
Riverlake Online Timecharter Equivalent Calculation :  
<http://www.riverlake.ch/en/utilities/rticalc.php>

TIME CHARTER EQUIVALENT (\$/DAY)

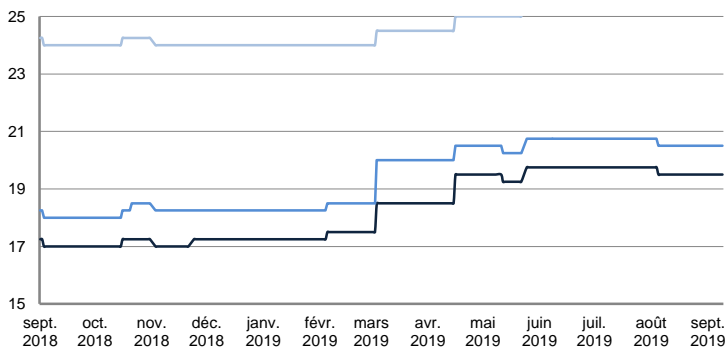


	TODAY	TUESDAY	WEEKLY TREND	MTD AVERAGE
UKC / STATES 37kT	3'521.0	3'807.0	▲	5138.5
UKC / WAF 33kT	7'750.0	7'627.0	▲	8742.3
BALTIC / UKC 30kT	3'682.0	4'214.0	▼	4274.5
BSEA / MED 30kT	2'900.0	2'824.0	▲	2306.8

SMALL TANKERS

DPP

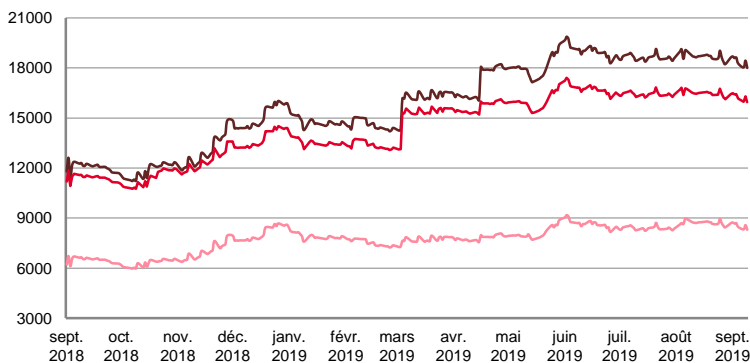
\$ / T



	TODAY	TUESDAY	WEEKLY TREND	MTD AVERAGE
BALTIC / UKC 15kT	19.5	19.5	▬	19.5
BALTIC / UKC 12kT	20.5	20.5	▬	20.5
BALTIC / UKC 6kT	25.5	25.5	▬	25.5

For detailed information, visit our website :  
Riverlake Online Timecharter Equivalent Calculation :  
<http://www.riverlake.ch/en/utilities/rticalc.php>

TIME CHARTER EQUIVALENT (\$/DAY)

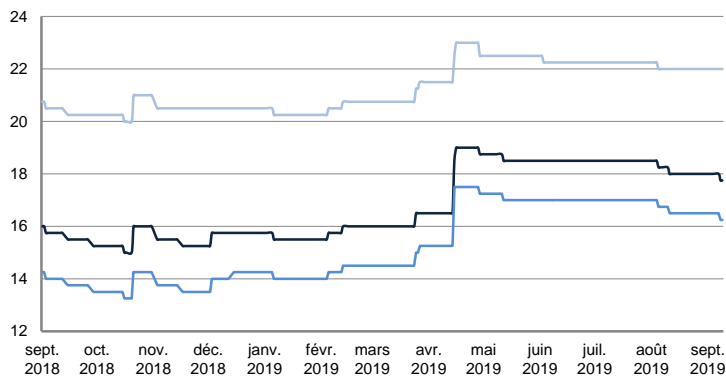


	TODAY	TUESDAY	WEEKLY TREND	MTD AVERAGE
BALTIC / UKC 15kT	18'001.0	18'443.0	▼	18411.0
BALTIC / UKC 10kT	15'947.0	16'295.0	▼	16269.8
BALTIC / UKC 6kT	8'303.0	8'580.0	▼	8560.1

SMALL TANKERS

CPP

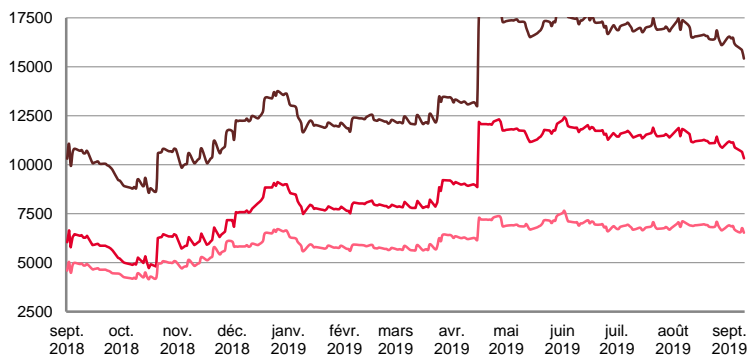
\$ / T



	TODAY	TUESDAY	WEEKLY TREND	MTD AVERAGE
BALTIC / UKC 15KT	17.8	17.8	▼	17.9
BALTIC / UKC 12KT	16.3	16.3	▼	16.4
BALTIC / UKC 6KT	22.0	22.0	▬	22.0

For detailed information, visit our website :  
Riverlake Online Timecharter Equivalent Calculation :  
<http://www.riverlake.ch/en/utilities/rtcalc.php>

TIME CHARTER EQUIVALENT (\$/DAY)

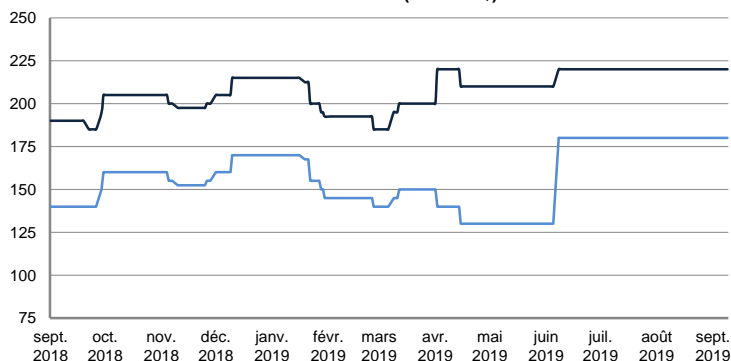


	TODAY	TUESDAY	WEEKLY TREND	MTD AVERAGE
BALTIC / UKC 15KT	15'418.0	15'830.0	▼	16160.6
BALTIC / UKC 12KT	10'323.0	10'644.0	▼	10893.9
BALTIC / UKC 6KT	6'524.0	6'765.0	▼	6747.6

SMALL TANKERS - AFRICA

CPP

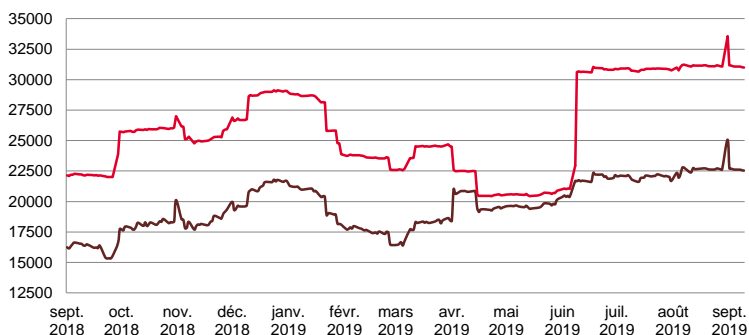
LUMPSUM (000's US\$)



	TODAY	TUESDAY	WEEKLY TREND	MTD AVERAGE
XWAF 15kT	220'000.0	220'000.0	▬	220000.0
XWAF 10kT	180'000.0	180'000.0	▬	180000.0

For detailed information, visit our website :  
Riverlake Online Timecharter Equivalent Calculation :  
<http://www.riverlake.ch/en/utilities/rtcalc.php>

TIME CHARTER EQUIVALENT (\$/DAY)



	TODAY	TUESDAY	WEEKLY TREND	MTD AVERAGE
XWAF 15kT	22'537.0	22'561.0	▲	22931.6
XWAF 10kT	30'995.0	31'019.0	▲	31396.4

For other RTI's, fixture reports, analysis and forecasts go to [www.riverlake.ch](http://www.riverlake.ch).

Disclaimer:  
This report has been prepared by Riverlake Shipping S.A. The rates contained herein are indicative only. Rate indications are as of the date of publication and are subject to change without notice. Riverlake Shipping S.A. does not assume any liability or responsibility for the correctness or completeness of the information contained herein. The above report is Copyright of Riverlake Shipping S.A. No unauthorised reproduction or redistribution without permission from Riverlake Shipping S.A.