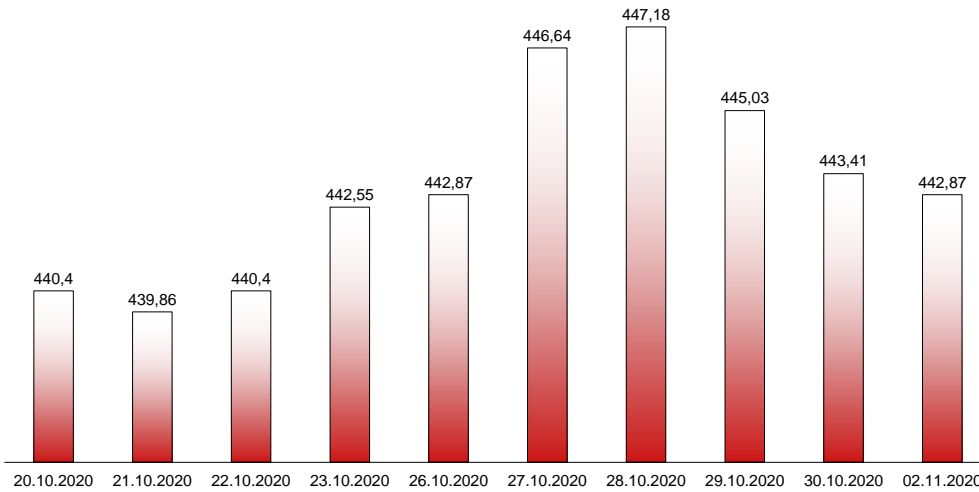


02.11.2020

RIVERLAKE european TANKER INDEX (ReTI)*



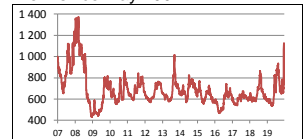
ReTI values

Max	24.07.08	1372,70
Today		442,87
Min	28.04.09	431,82

ReTI trends

daily	-0,54
avg last decade	5,25
avg last 30 days	-28,47

ReTI since May 2007



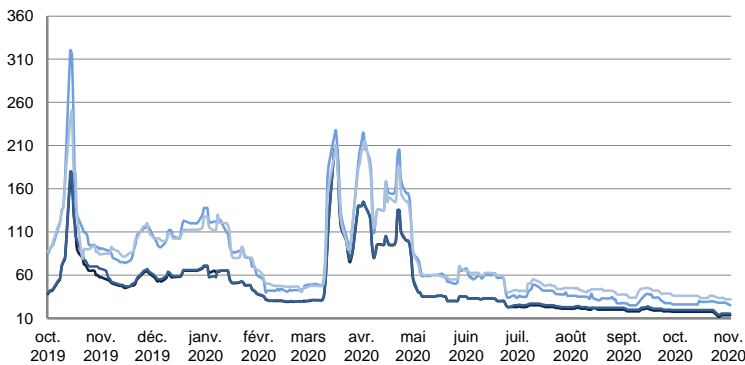
* The Riverlake european Tanker Index (ReTI) is a composite index. All main European tanker movements are represented being six crude oil tanker routes, six clean petroleum products tanker routes and five dirty petroleum tanker routes. The oil tanker stems represented are between 6'000 MT to 135'000 MT. It covers all regions in Europe including the North Sea, Baltic Sea, UKContinent, Mediterranean and Black Sea.

RIVERLAKE TANKER INDEX (RTI)

CRUDE OIL TANKERS

VLCC

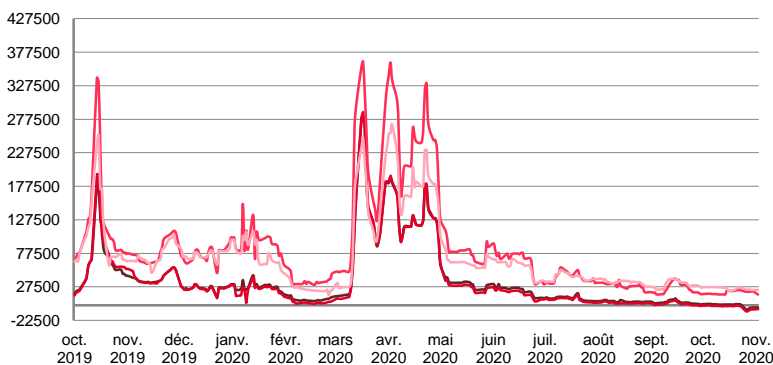
WORLDSCALE



	TODAY	FRIDAY	DAILY TREND	MTD AVERAGE
—AG / USG 280kT	13,5	13,5	—	13,5
—AG / UKC 280kT	15,5	15,5	—	15,5
—AG / EAST 270kT	25,0	28,0	▼	25,0
—WAF / USG 260kT	32,0	32,0	—	32,0

For detailed information, visit our website :
Riverlake Online Timecharter Equivalent Calculation :
<http://www.riverlake.ch/en/utilities/rticalc.php>

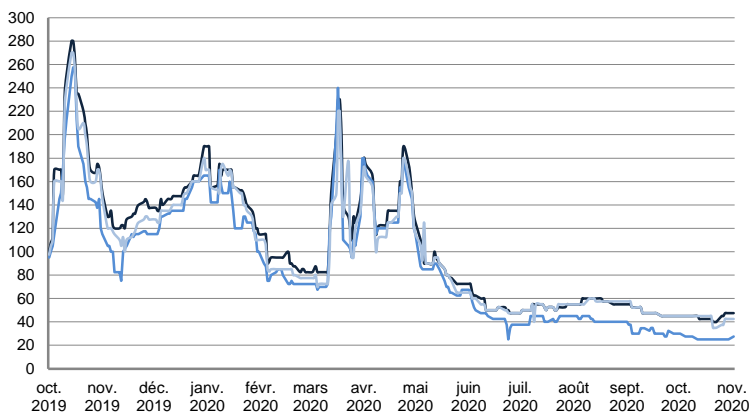
TIME CHARTER EQUIVALENT (\$/DAY)



	TODAY	FRIDAY	DAILY TREND	MTD AVERAGE
—AG / USG 280kT	-3 179,0	-3 322,0	▲	-3179,0
—AG / UKC 280kT	-5 822,0	-5 967,0	▲	-5822,0
—AG / EAST 270kT	16 025,0	21 021,0	▼	16025,0
—WAF / USG 260kT	23 044,0	23 025,0	▲	23044,0

SUEZMAX

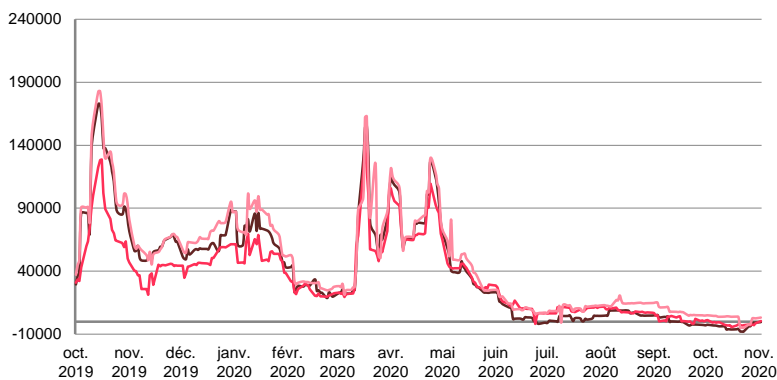
WORLDSCALE



	TODAY	FRIDAY	DAILY TREND	MTD AVERAGE
BSEA / MED 135kT	47,5	47,5	—	47,5
WAF / USG 130kT	27,5	25,0	▲	32,0
XMED 135kT	42,5	42,5	—	42,5

For detailed information, visit our website :
Riverlake Online Timecharter Equivalent Calculation :
<http://www.riverlake.ch/en/utilities/rticalc.php>

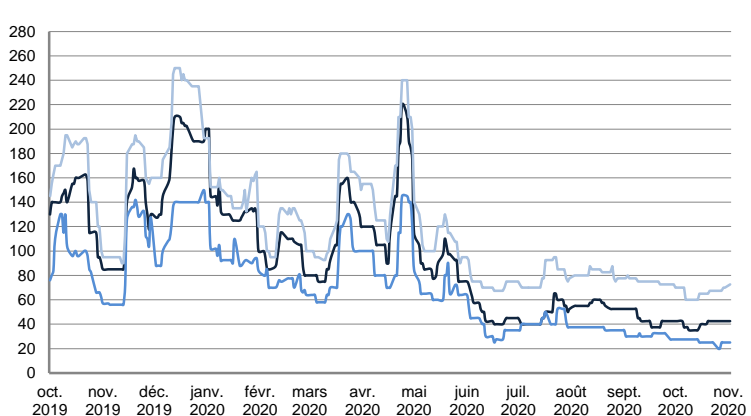
TIME CHARTER EQUIVALENT (\$/DAY)



	TODAY	FRIDAY	DAILY TREND	MTD AVERAGE
BSEA / MED 135kT	-383,0	-779,0	▲	-383,0
WAF / USG 130kT	414,0	-1 317,0	▲	414,0
XMED 135kT	3 238,0	2 586,0	▲	3238,0

AFRAMAX

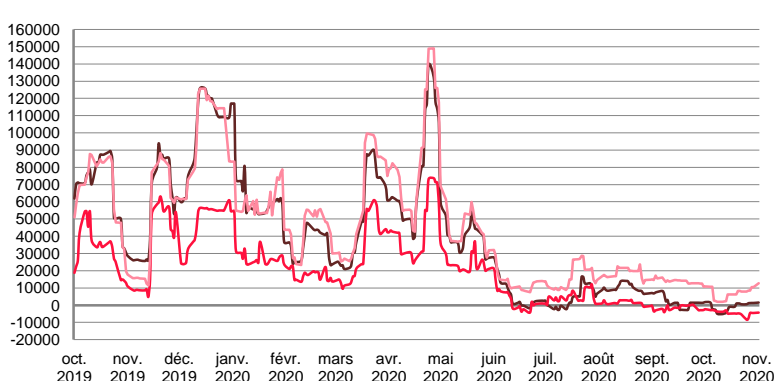
WORLDSCALE



	TODAY	FRIDAY	DAILY TREND	MTD AVERAGE
BALTIC / UKC 100kT	42,5	42,5	—	42,5
BALTIC / STATES 100kT	25,0	25,0	—	25,0
NSEA / UKC 80kT	72,5	70,0	▲	72,5

For detailed information, visit our website :
Riverlake Online Timecharter Equivalent Calculation :
<http://www.riverlake.ch/en/utilities/rticalc.php>

TIME CHARTER EQUIVALENT (\$/DAY)

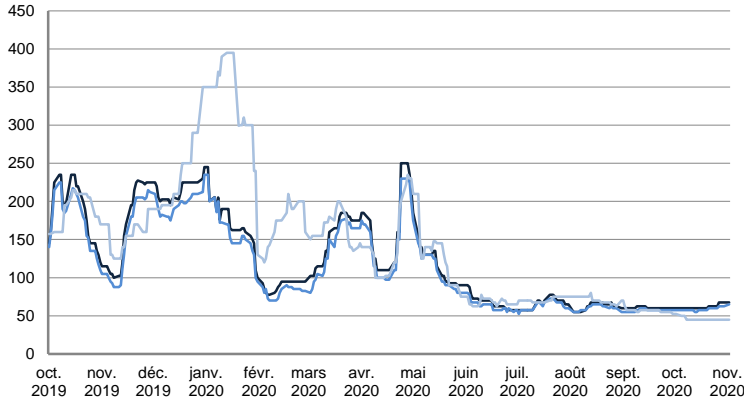


	TODAY	FRIDAY	DAILY TREND	MTD AVERAGE
BALTIC / UKC 100kT	1 539,0	1 303,0	▲	1539,0
BALTIC / STATES 100kT	-4 297,0	-4 505,0	▲	-4297,0
NSEA / UKC 80kT	12 796,0	10 551,0	▲	12796,0

CRUDE OIL TANKERS

AFRAMAX

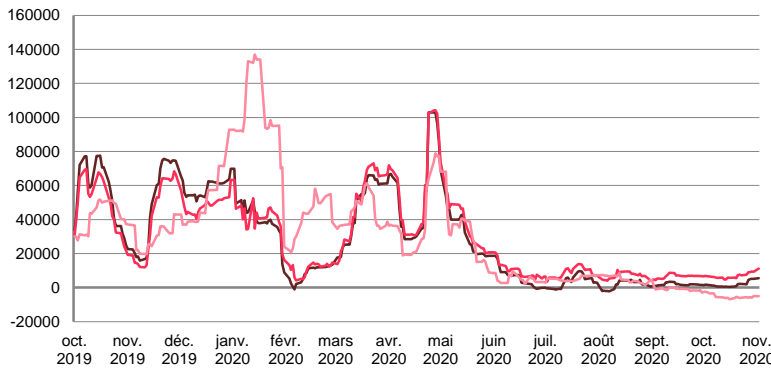
WORLDSCALE



	TODAY	FRIDAY	DAILY TREND	MTD AVERAGE
— BSEA / MED 80kT	67,5	67,5	▬	67,5
— XMED 80kT	65,0	62,5	▲	65,0
— CAR / USA 70kT	45,0	45,0	▬	45,0

For detailed information, visit our website :
Riverlake Online Timecharter Equivalent Calculation :
<http://www.riverlake.ch/en/utilities/rticalc.php>

TIME CHARTER EQUIVALENT (\$/DAY)

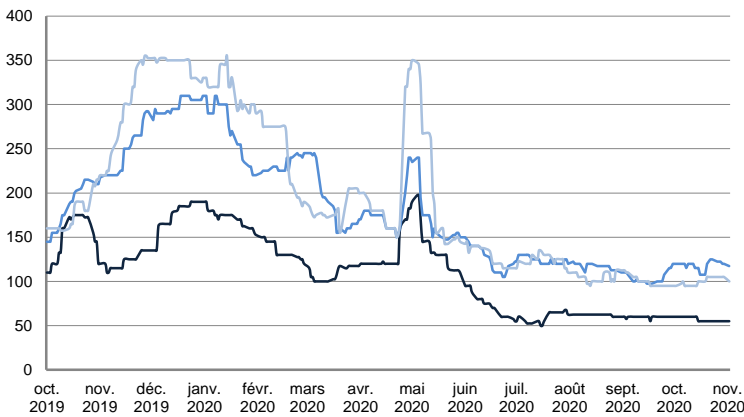


	TODAY	FRIDAY	DAILY TREND	MTD AVERAGE
— BSEA / MED 80kT	5 500,0	5 174,0	▲	5500,0
— XMED 80kT	11 149,0	9 278,0	▲	11149,0
— CAR / USA 70kT	-4 976,0	-4 988,0	▲	-4976,0

PRODUCT TANKERS

DPP

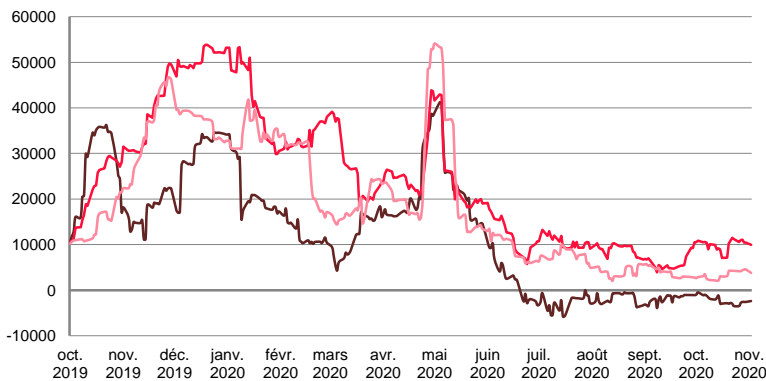
WORLDSCALE



	TODAY	FRIDAY	DAILY TREND	MTD AVERAGE
— BALTIC / STATES 55kT	55,0	55,0	▬	55,0
— BALTIC / UKC 30kT	117,5	120,0	▼	117,5
— BSEA / MED 30kT	100,0	105,0	▼	100,0

For detailed information, visit our website :
Riverlake Online Timecharter Equivalent Calculation :
<http://www.riverlake.ch/en/utilities/rticalc.php>

TIME CHARTER EQUIVALENT (\$/DAY)

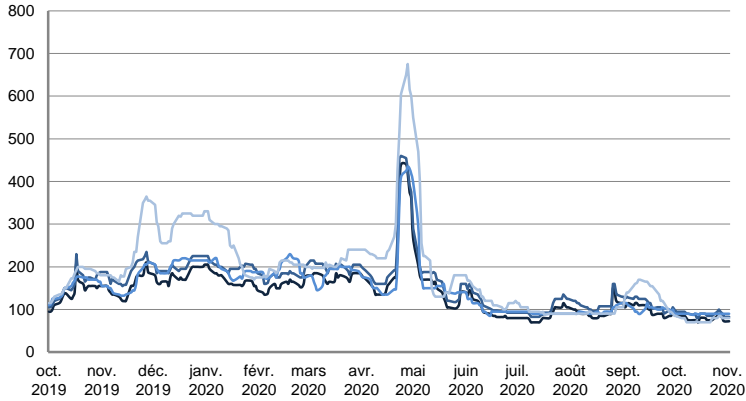


	TODAY	FRIDAY	DAILY TREND	MTD AVERAGE
— BALTIC / STATES 55kT	-2 375,0	-2 573,0	▲	-2375,0
— BALTIC / UKC 30kT	9 961,0	10 467,0	▼	9961,0
— BSEA / MED 30kT	3 797,0	4 552,0	▼	3797,0

PRODUCT TANKERS

CPP

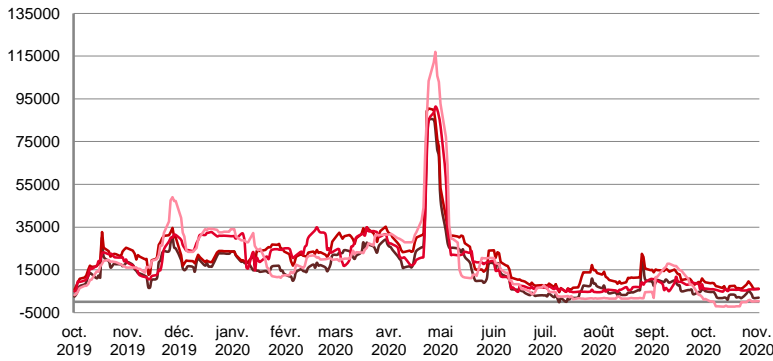
WORLDSCALE



	TODAY	FRIDAY	DAILY TREND	MTD AVERAGE
—UKC / STATES 37kT	72,5	72,5	—	72,5
—UKC / WAF 33kT	82,5	82,5	—	82,5
—BALTIC / UKC 30kT	90,0	90,0	—	90,0
—BSEA / MED 30kT	80,0	80,0	—	80,0

For detailed information, visit our website :
Riverlake Online Timecharter Equivalent Calculation :
<http://www.riverlake.ch/en/utilities/rticalc.php>

TIME CHARTER EQUIVALENT (\$/DAY)

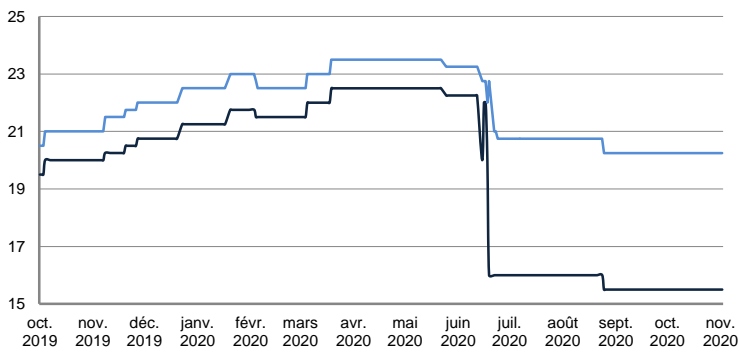


	TODAY	FRIDAY	DAILY TREND	MTD AVERAGE
—UKC / STATES 37kT	1 980,0	1 845,0	▲	1980,0
—UKC / WAF 33kT	6 182,0	6 053,0	▲	6182,0
—BALTIC / UKC 30kT	5 977,0	5 861,0	▲	5977,0
—BSEA / MED 30kT	391,0	200,0	▲	391,0

SMALL TANKERS

DPP

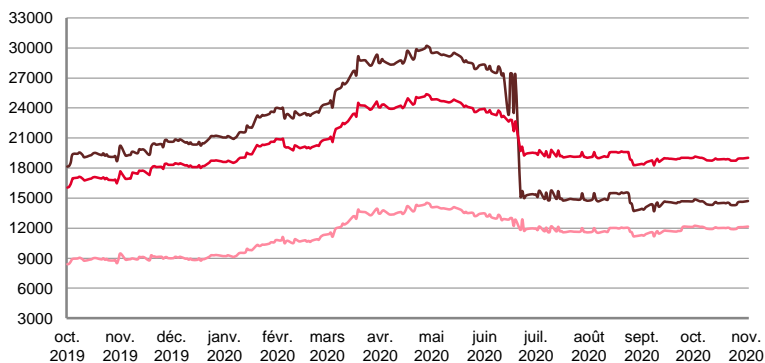
\$ / T



	TODAY	FRIDAY	DAILY TREND	MTD AVERAGE
—BALTIC / UKC 15kT	15,5	15,5	—	15,5
—BALTIC / UKC 12kT	20,3	20,3	—	20,3
—BALTIC / UKC 6kT	27,0	27,0	—	27,0

For detailed information, visit our website :
Riverlake Online Timecharter Equivalent Calculation :
<http://www.riverlake.ch/en/utilities/rticalc.php>

TIME CHARTER EQUIVALENT (\$/DAY)

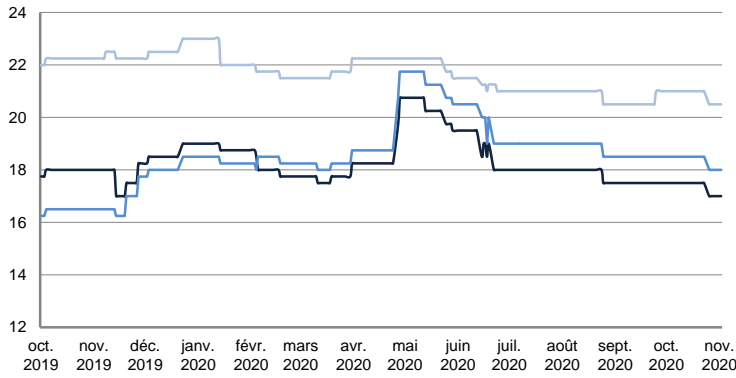


	TODAY	FRIDAY	DAILY TREND	MTD AVERAGE
—BALTIC / UKC 15kT	14 704,0	14 627,0	▲	14704,0
—BALTIC / UKC 10kT	19 038,0	18 972,0	▲	19038,0
—BALTIC / UKC 6kT	12 153,0	12 099,0	▲	12153,0

SMALL TANKERS

CPP

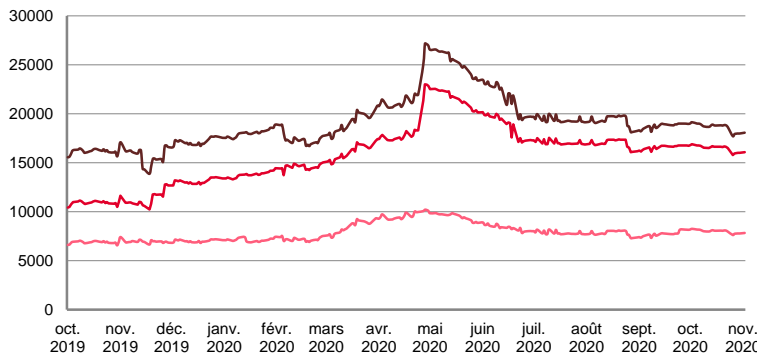
\$ / T



	TODAY	FRIDAY	DAILY TREND	MTD AVERAGE
BALTIC / UKC 15kT	17,0	17,0	—	17,0
BALTIC / UKC 12kT	18,0	18,0	—	18,0
BALTIC / UKC 6kT	20,5	20,5	—	20,5

For detailed information, visit our website :
Riverlake Online Timecharter Equivalent Calculation :
<http://www.riverlake.ch/en/utilities/rtcalc.php>

TIME CHARTER EQUIVALENT (\$/DAY)

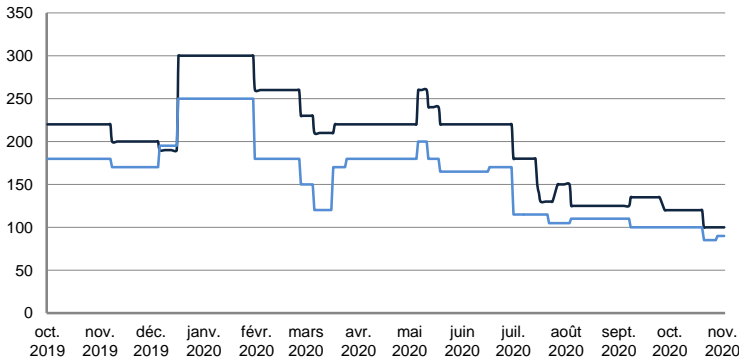


	TODAY	FRIDAY	DAILY TREND	MTD AVERAGE
BALTIC / UKC 15kT	18 062,0	17 976,0	▲	18062,0
BALTIC / UKC 12kT	16 058,0	15 993,0	▲	16058,0
BALTIC / UKC 6kT	7 820,0	7 769,0	▲	7820,0

SMALL TANKERS - AFRICA

CPP

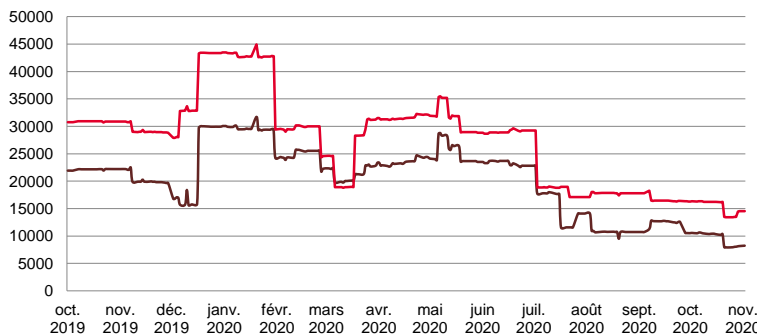
LUMPSUM (000's US\$)



	TODAY	FRIDAY	DAILY TREND	MTD AVERAGE
XWAF 15kT	100 000,0	100 000,0	—	100000,0
XWAF 10kT	90 000,0	90 000,0	—	90000,0

For detailed information, visit our website :
Riverlake Online Timecharter Equivalent Calculation :
<http://www.riverlake.ch/en/utilities/rtcalc.php>

TIME CHARTER EQUIVALENT (\$/DAY)



	TODAY	FRIDAY	DAILY TREND	MTD AVERAGE
XWAF 15kT	8 239,0	8 170,0	▲	8239,0
XWAF 10kT	14 545,0	14 516,0	▲	14545,0

For other RTI's, fixture reports, analysis and forecasts go to www.riverlake.ch.

Disclaimer:
This report has been prepared by Riverlake. The rates contained herein are indicative only. Rate indications are as of the date of publication and are subject to change without notice. Riverlake does not assume any liability or responsibility for the correctness or completeness of the information contained herein. The above report is Copyright of Riverlake. No unauthorised reproduction or redistribution without permission from Riverlake.